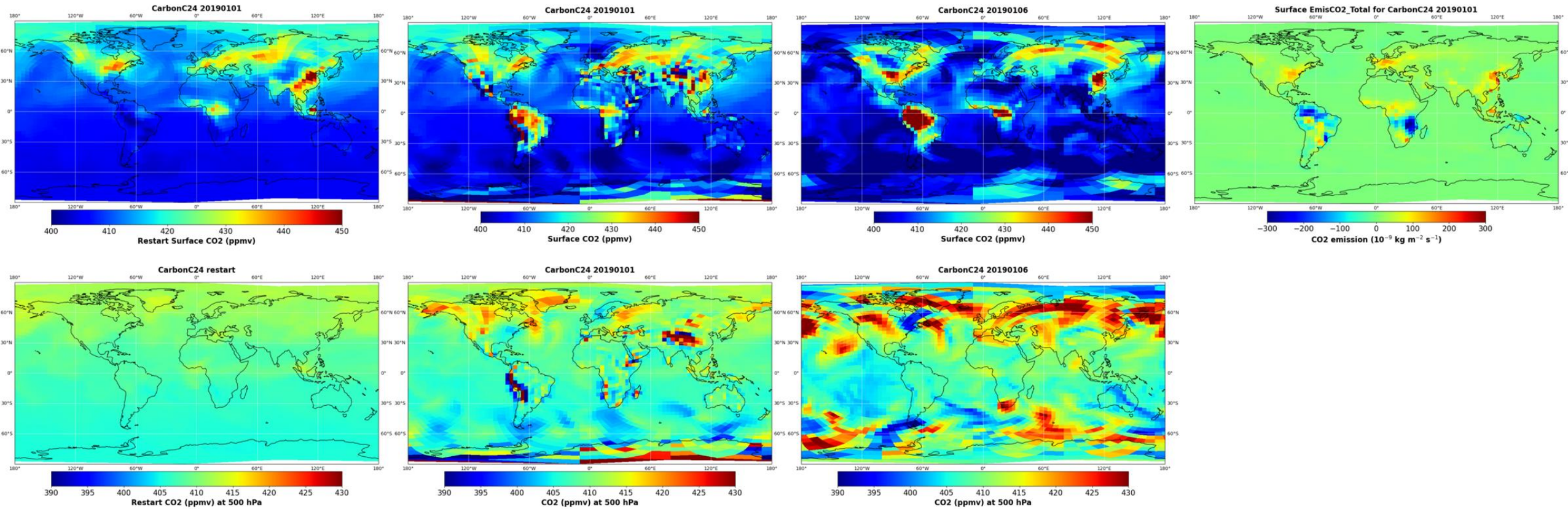
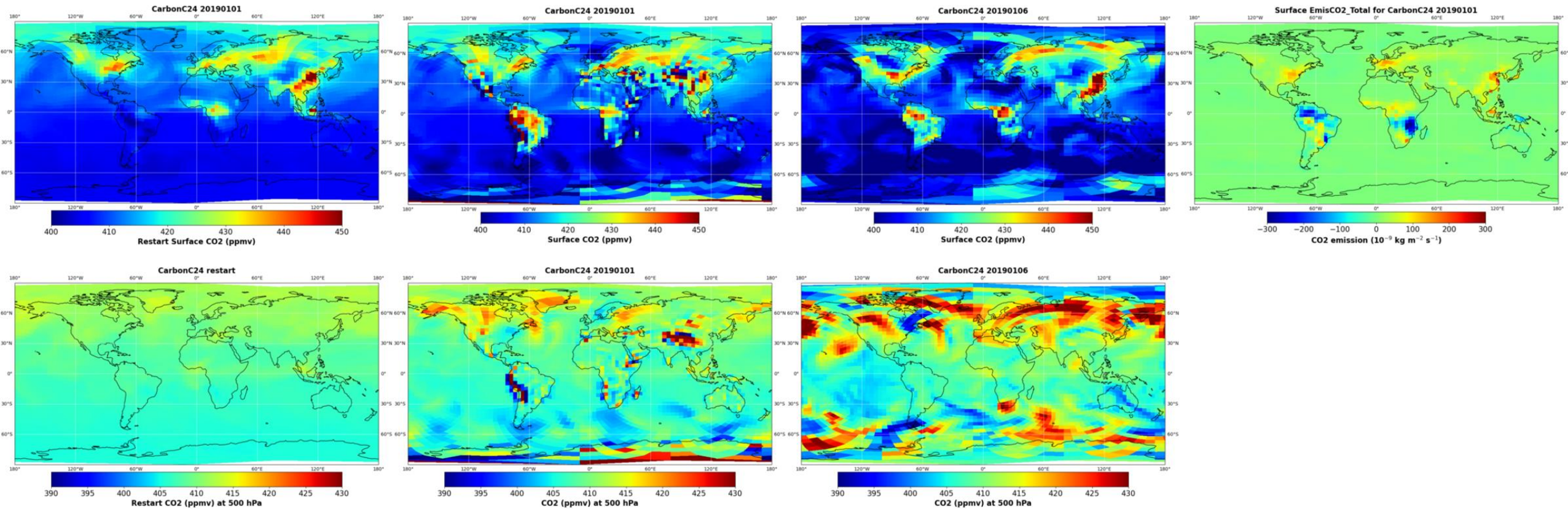


CO2 before MAPL update

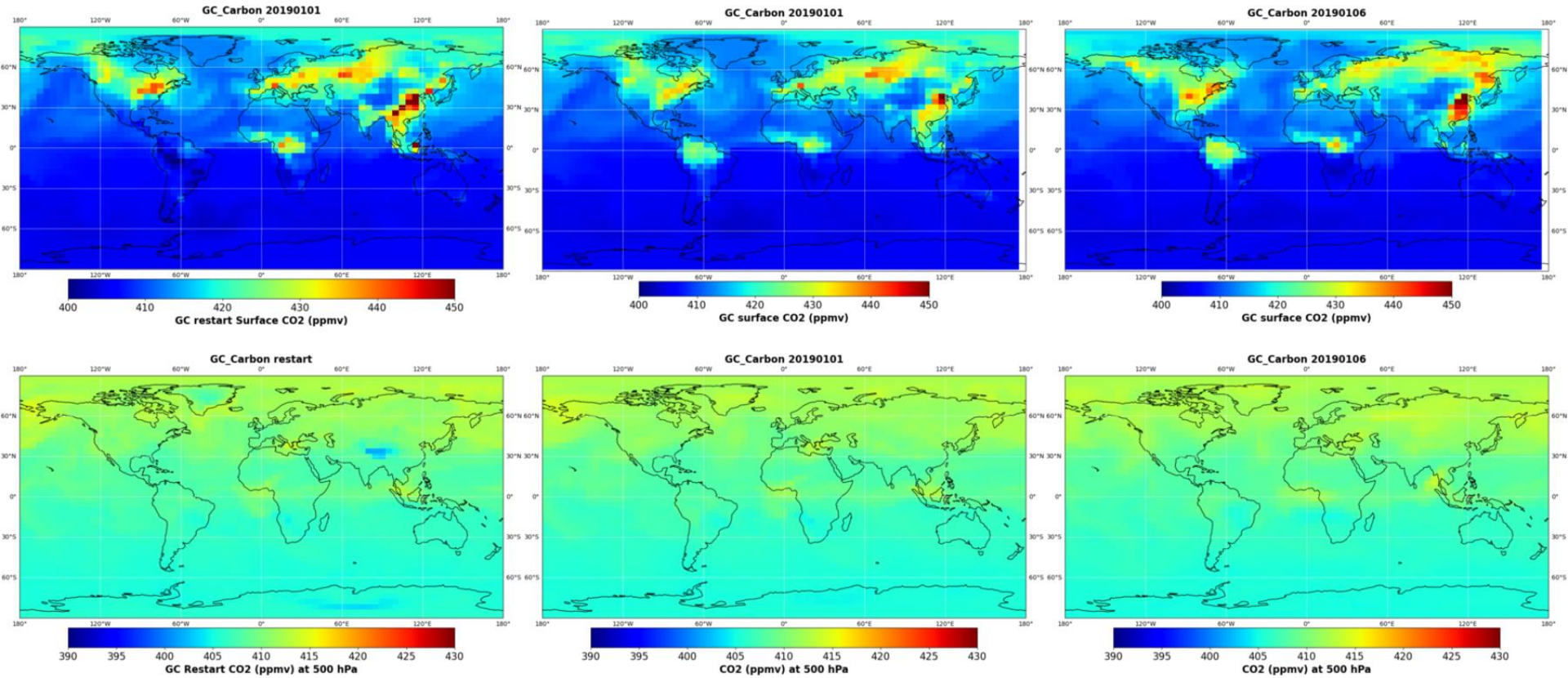


CO2 after MAPL update

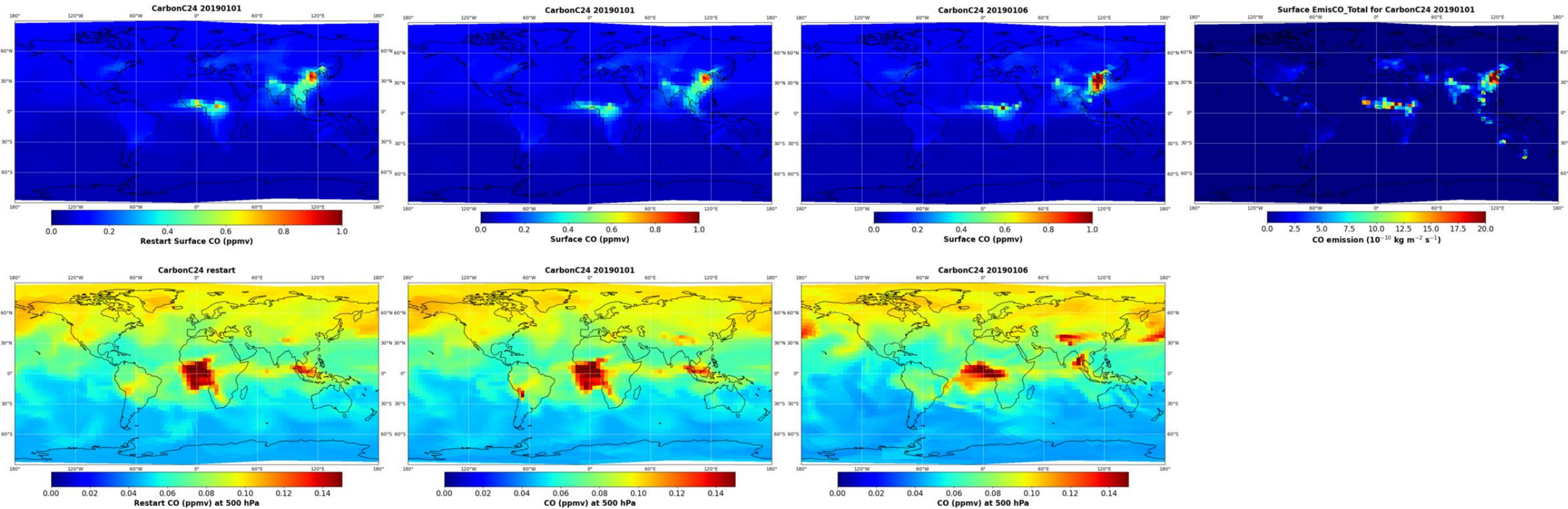


- Strange features are still present in the CO2 simulation after MAPL update.

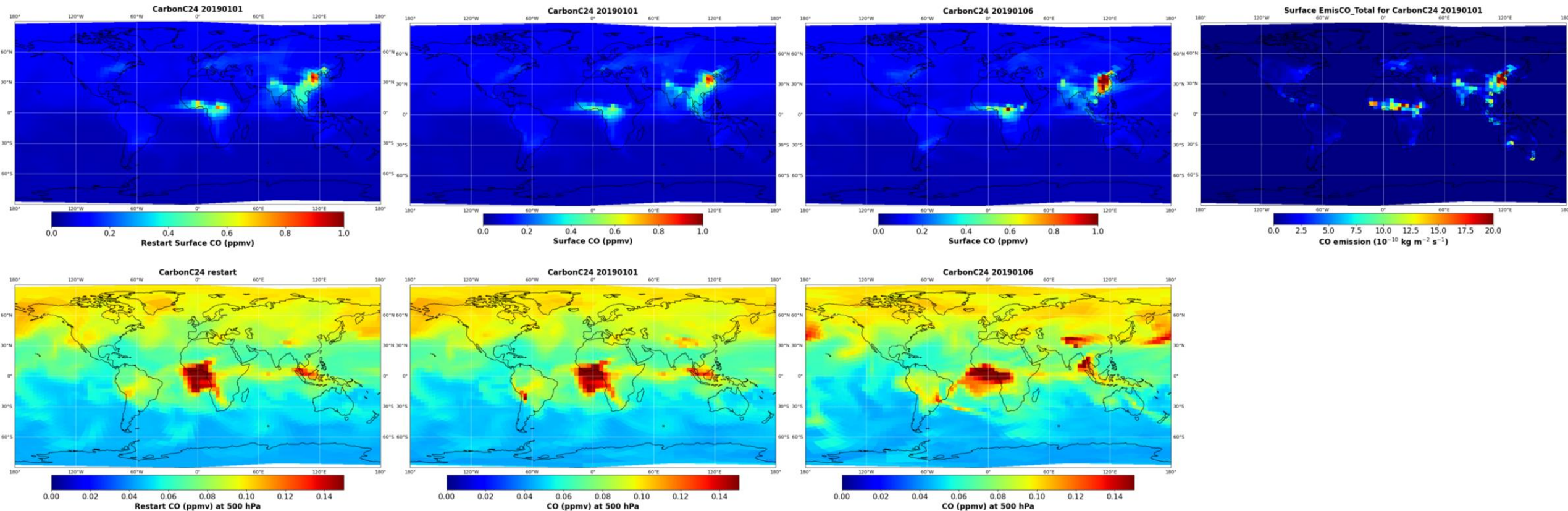
CO2 in GCClassic



CO before MAPL update

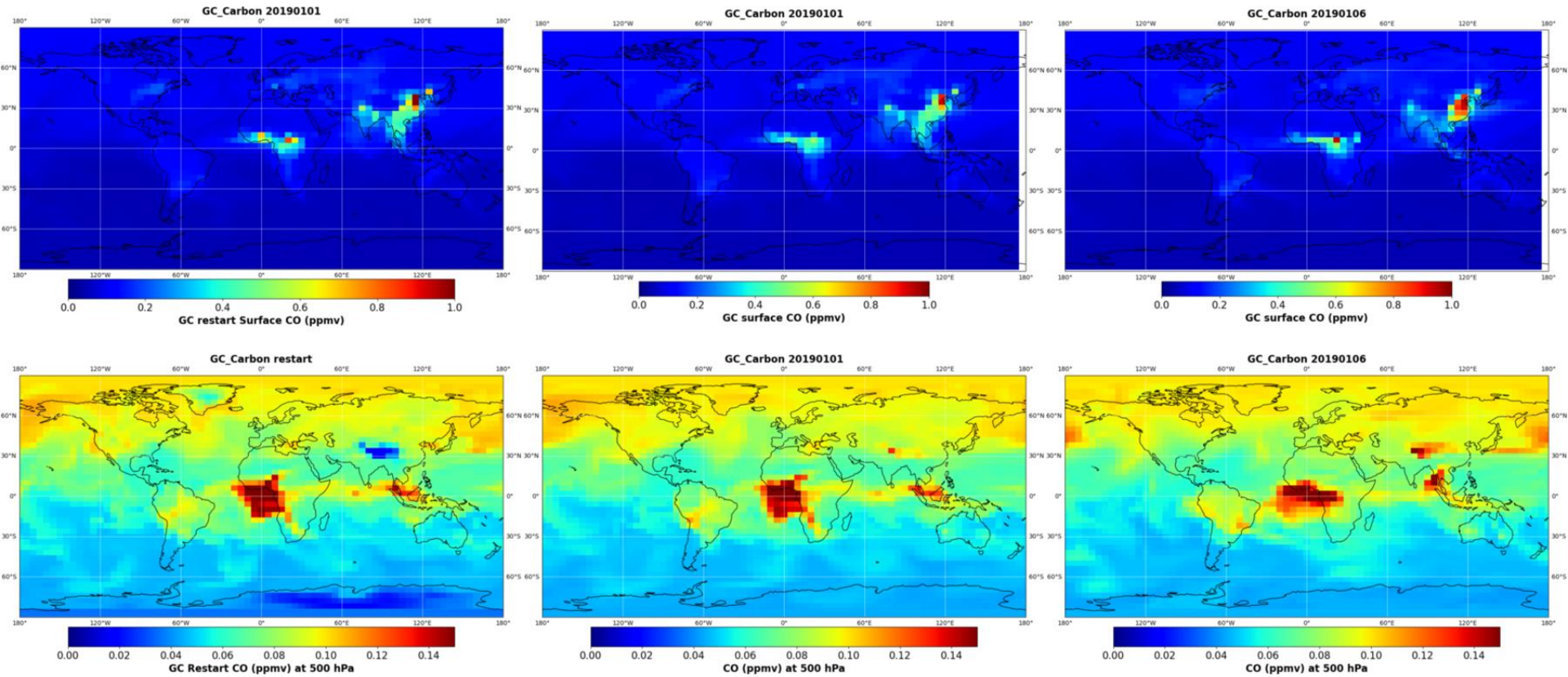


CO after MAPL update

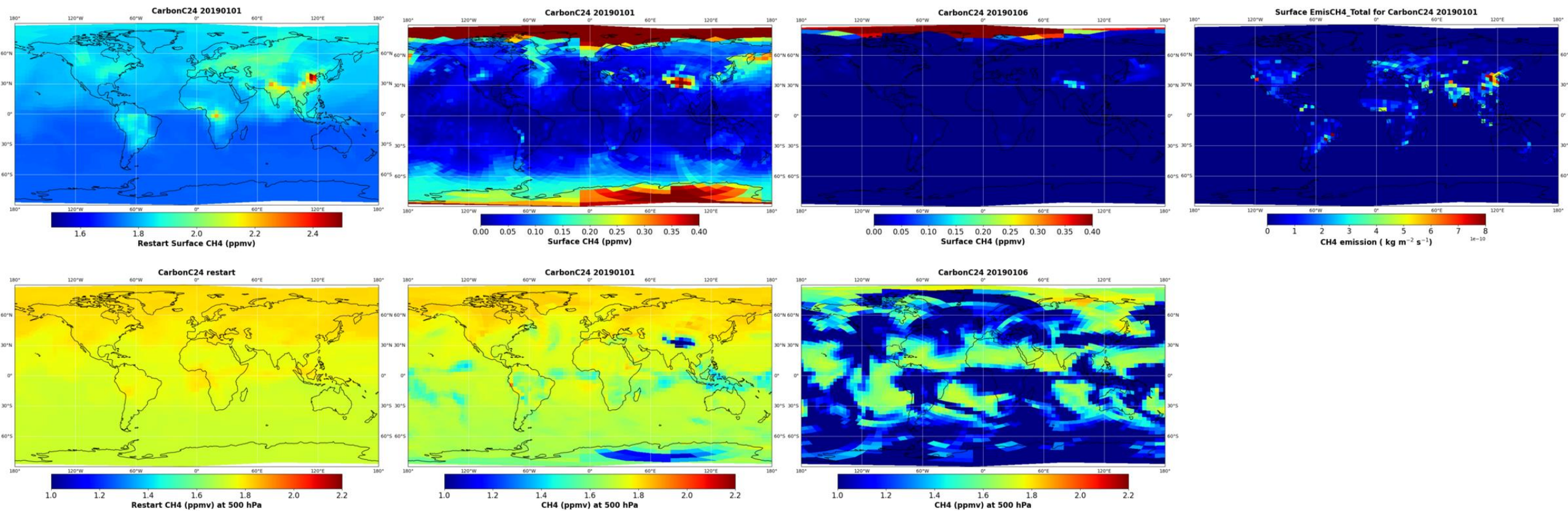


- The CO simulations appear reasonable, though there are still minor differences compared to GCClassic, with the features resembling those of CO₂.

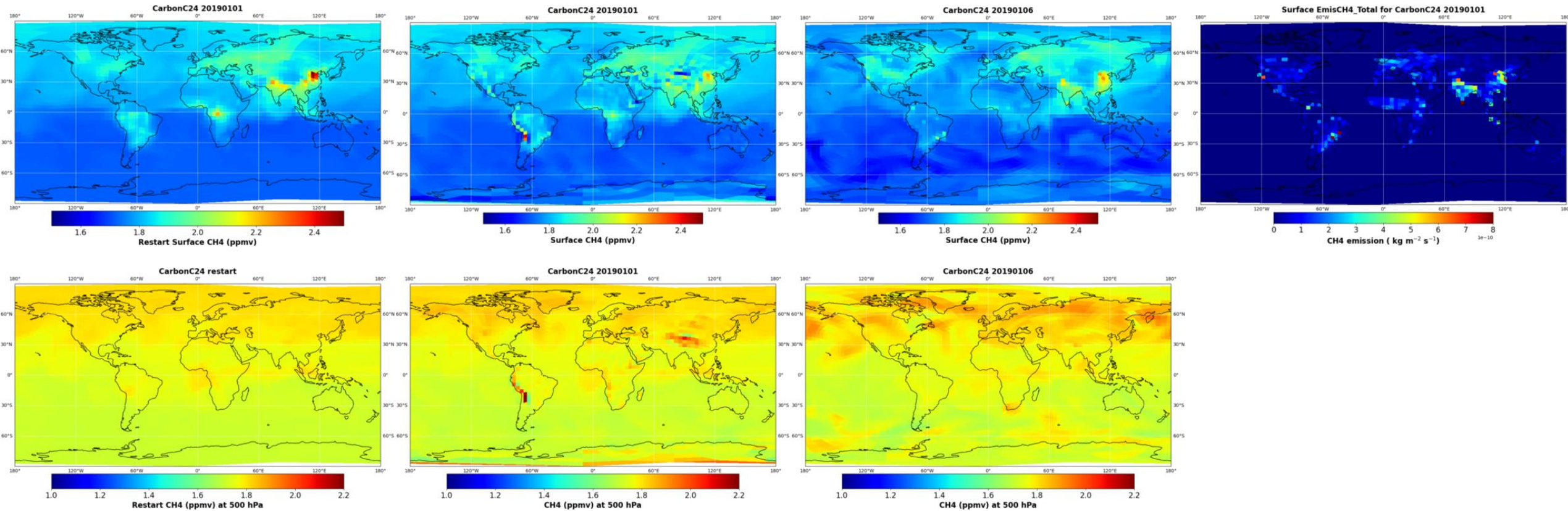
CO in GCClassic



CH4 before MAPL update



CH4 after MAPL update



- The CH₄ simulations are improved with MAPL update, though there are still minor differences compared to GCClassic, with the features resembling those of CO₂.

CH4 in GCClassic

