



Personal Signal Assistant® Vehicle Intelligence Report

prepared for:

Broward County, FL

last updated:

Tuesday, January 31, 2023

data sources/credits:

Audi of America, Inc./Audi AG

Broward County, FL

CARIAD SE (Volkswagen Group)

City of Fort Lauderdale, FL

Florida Department of Transportation

Traffic Technology Services, Inc.

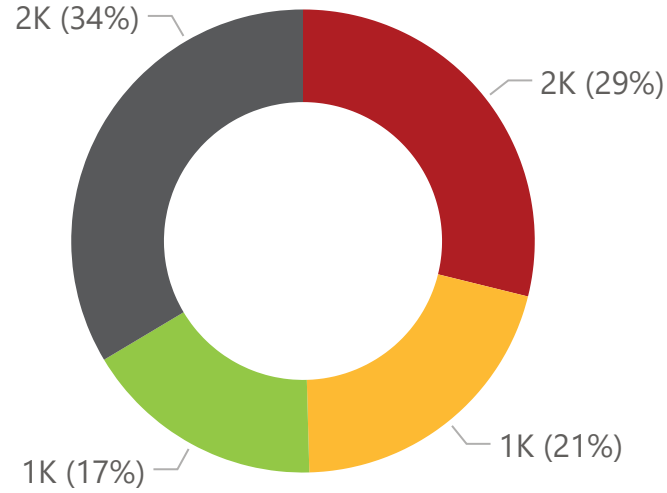
data from:

Monday, March 01, 2021

data to:

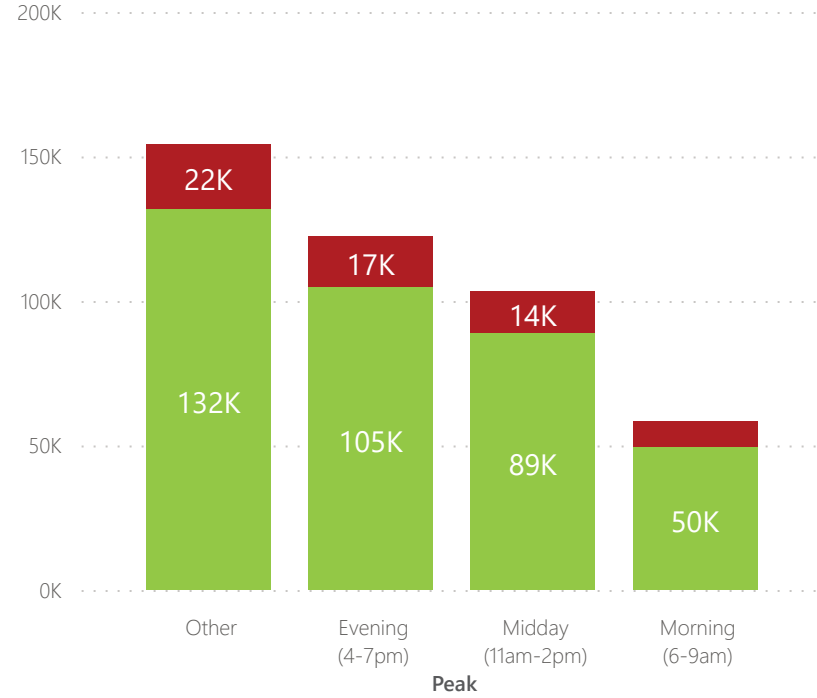
Sunday, September 04, 2022

Total Delay (Hours)

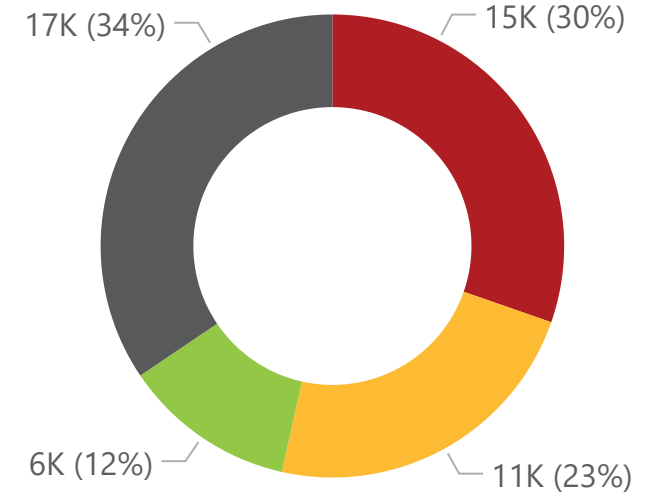


Peak ● Evening (4-7pm) ● Midday (11am-2pm) ● Morning (6-9am) ● Other

Arrivals



Split Failures



Peak ● Evening (4-7pm) ● Midday (11am-2pm) ● Morning (6-9am) ● Other

Average Delay

14
(sec/veh)

Total Delay

7K
(hours)

Total Crossings

1.8M

Green Arrival Rate

86%

Red Arrival Rate

14%

Split Failure Rate

3%

Total Split Failures

48K

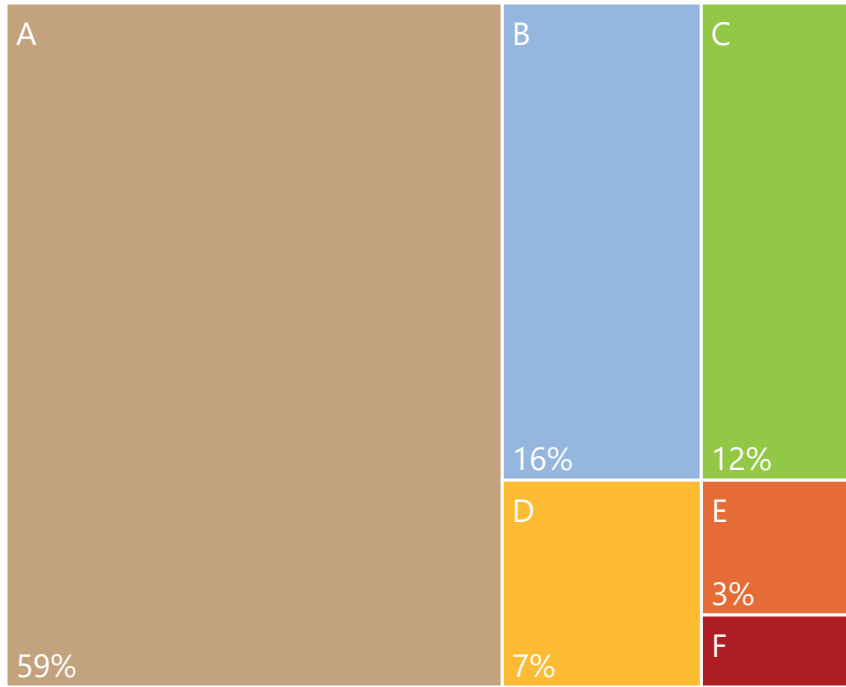
Arrival Crossings

438.4K

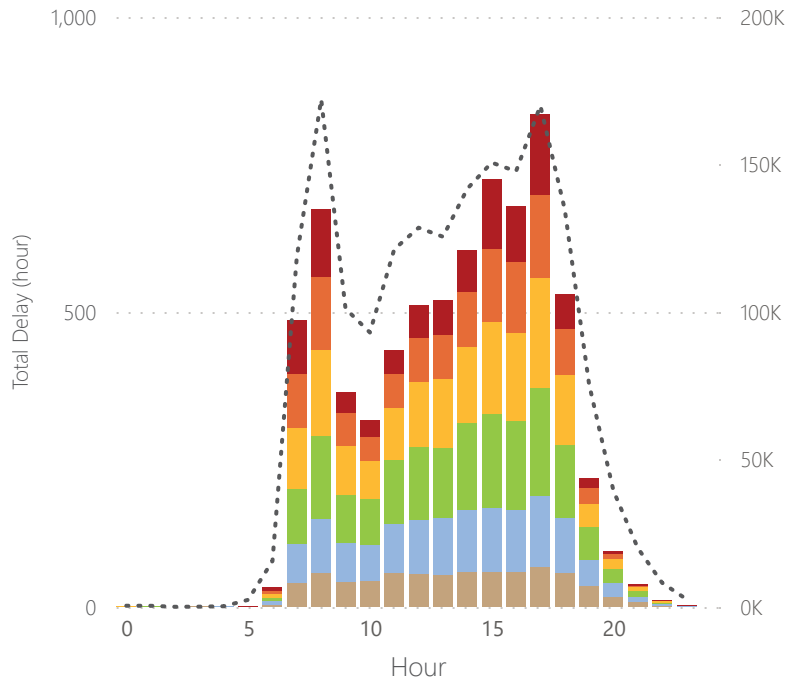
Split Failure Crossings

103.9K

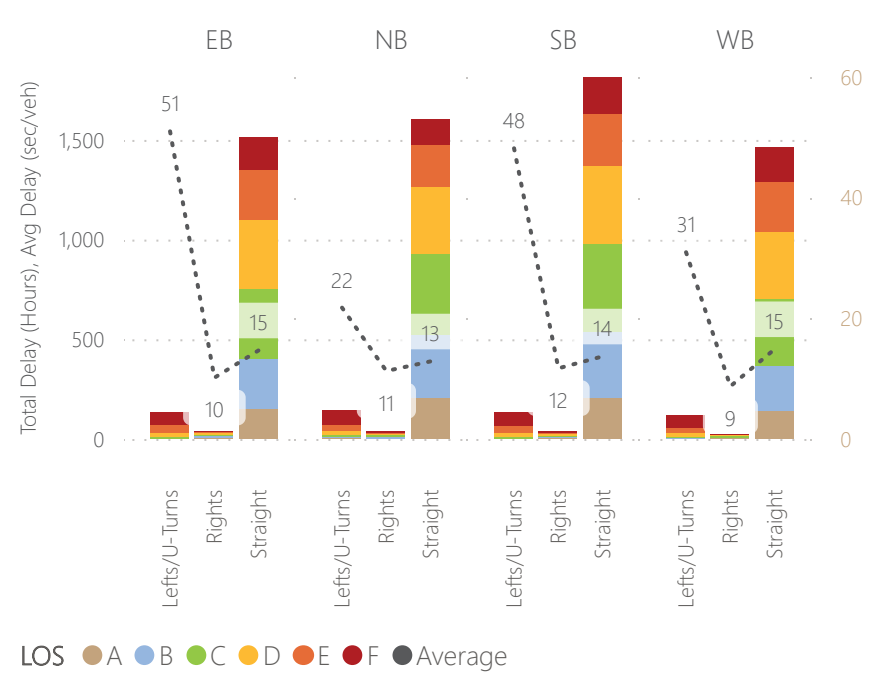
LOS Crossings



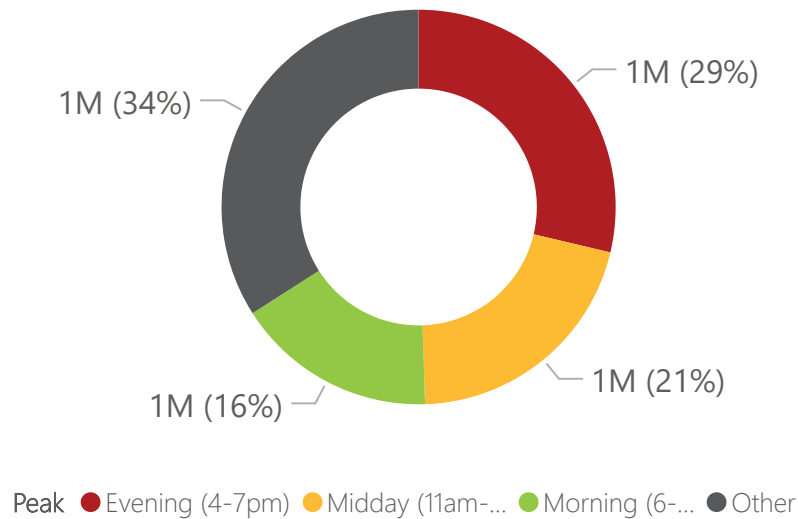
Total Delay by Hour



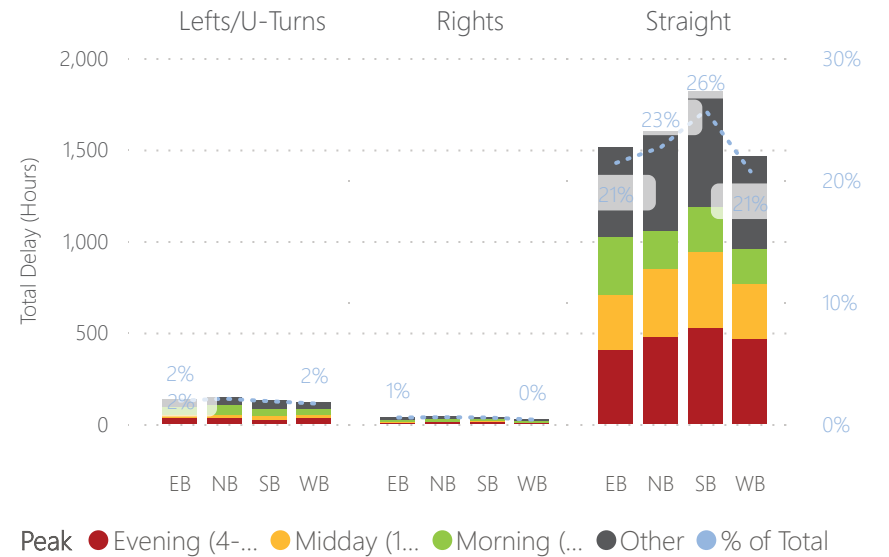
Delay by Direction



Total Delay (Hours) by Peak



Delay by Movement



Total Crossings
1,770,226

Total Intersections
1,283

Total Delay (hours)
7,085

Average Delay
14.4
(sec/veh)

Morning Peak
14.0

Midday Peak
14.1

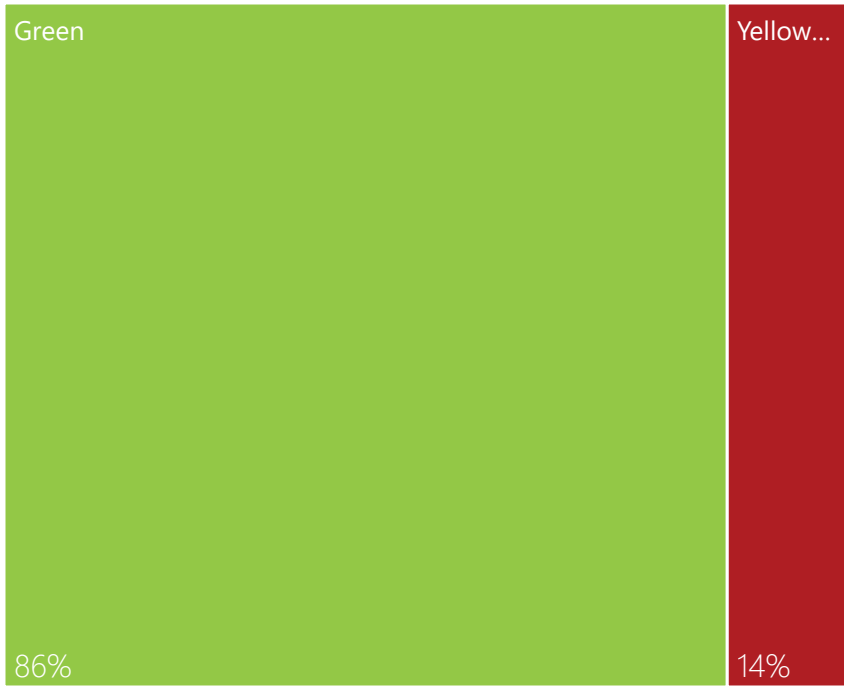
Evening Peak
16.3



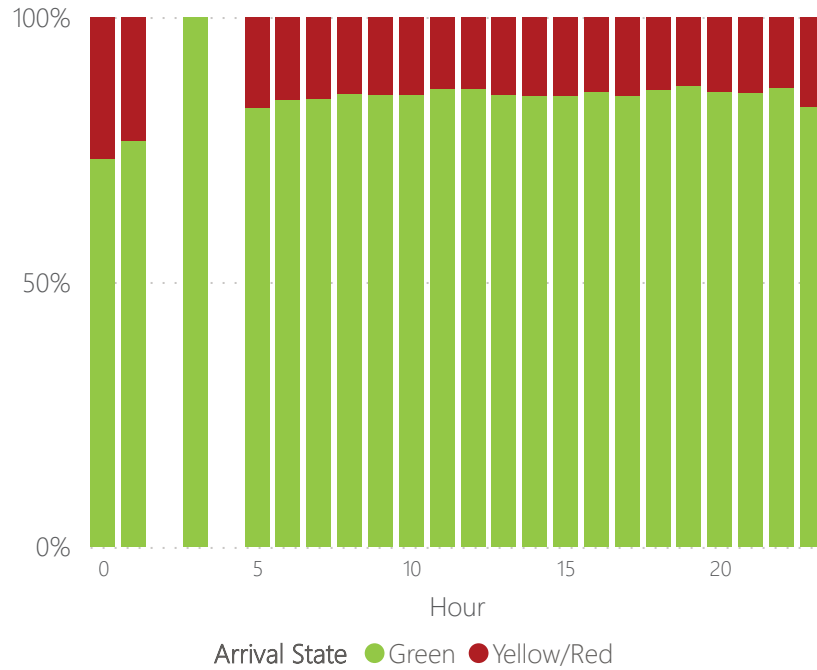
Peak ● Evening (4-7pm) ● Midday (11am-1pm) ● Morning (6-9am) ● Other

Peak ● Evening (4-7pm) ● Midday (11am-1pm) ● Morning (6-9am) ● Other ● % of Total

Arrival Crossings



Arrival Rate by Hour



Arrivals by Direction



Total Crossings

438,395

Total Intersections

1,074

Total Red Arrivals

62,712



Green Arrival Rate

86%

Morning Peak

85%

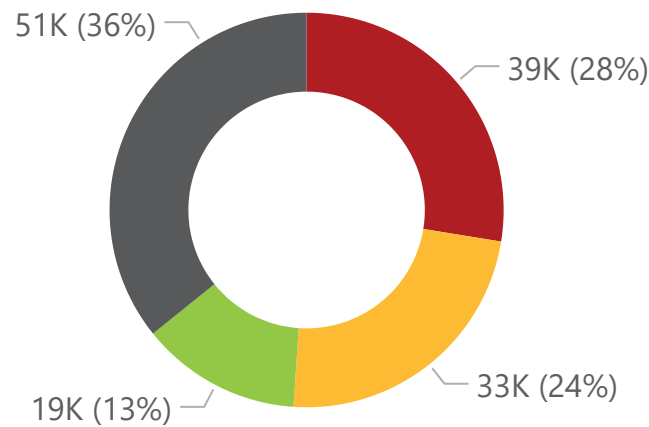
Midday Peak

86%

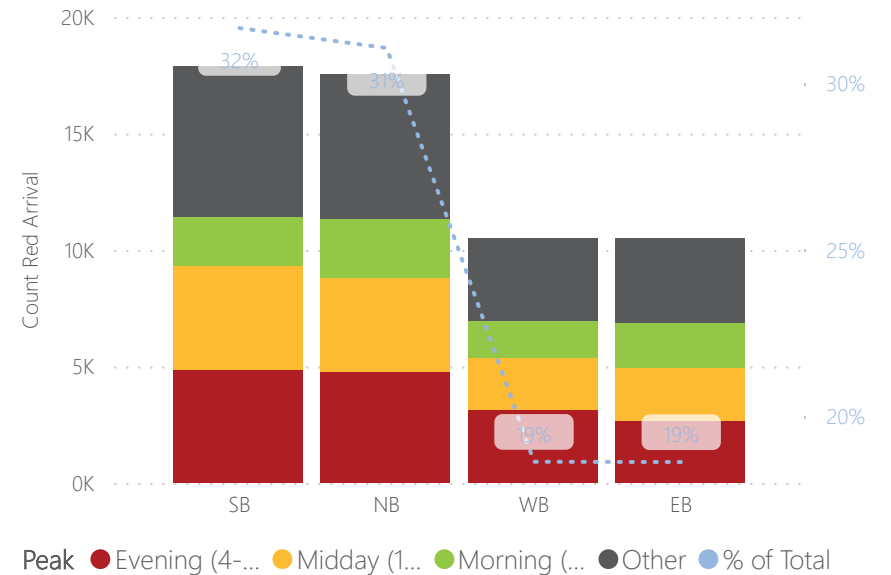
Evening Peak

86%

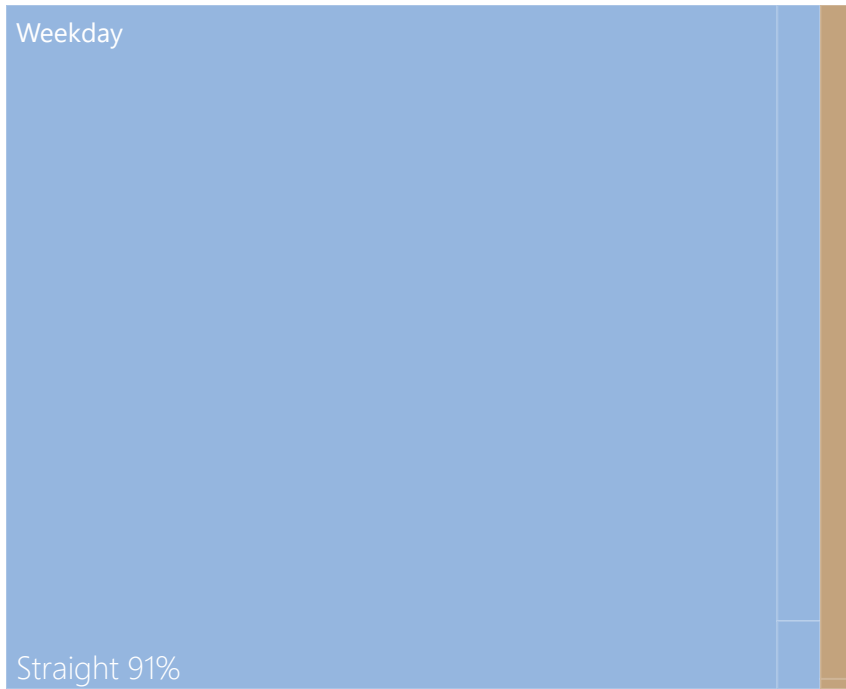
Red Arrivals by Peak



Red Arrivals by Direction



Split Failures Crossings



Total Crossings

89,099

Total Intersections

1,090

Total Split Failures

48,346



TRAFFIC
TECHNOLOGY
SERVICES

Split Failure Rate

3%

Morning Peak

1.9%

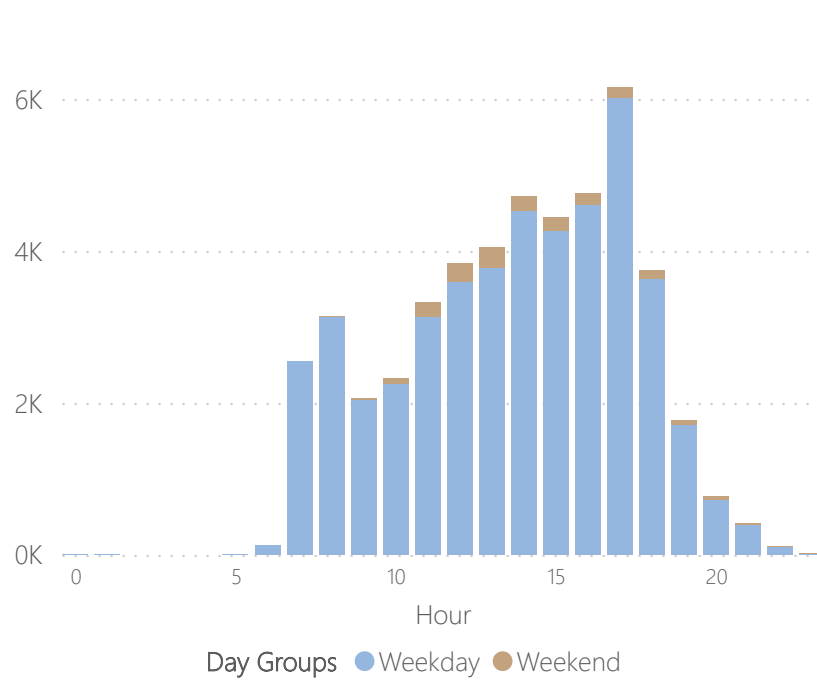
Midday Peak

3.0%

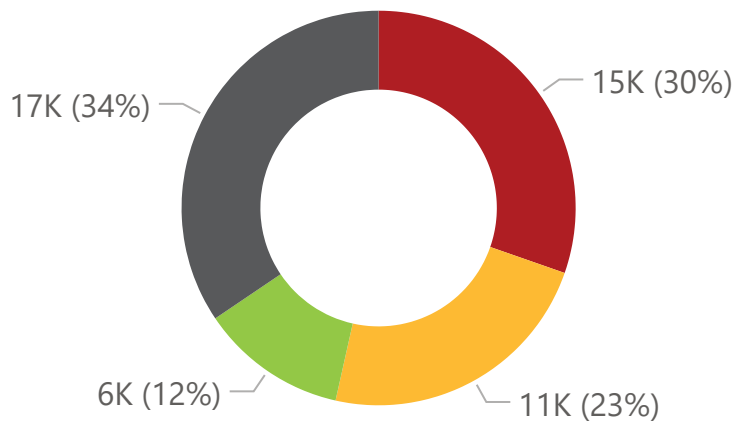
Evening Peak

3.2%

Split Failures by Hour

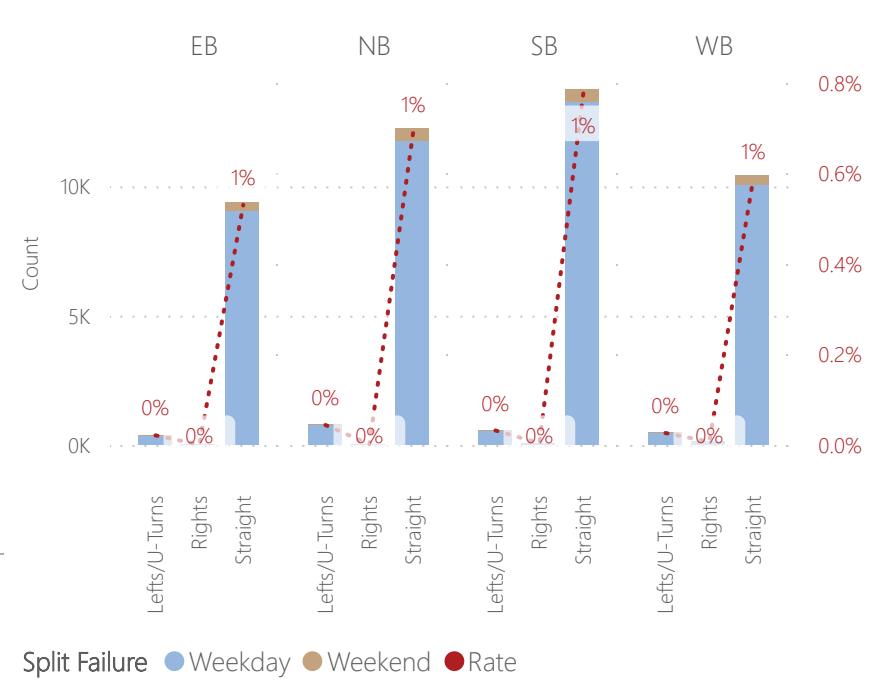


Split Failures by Peak

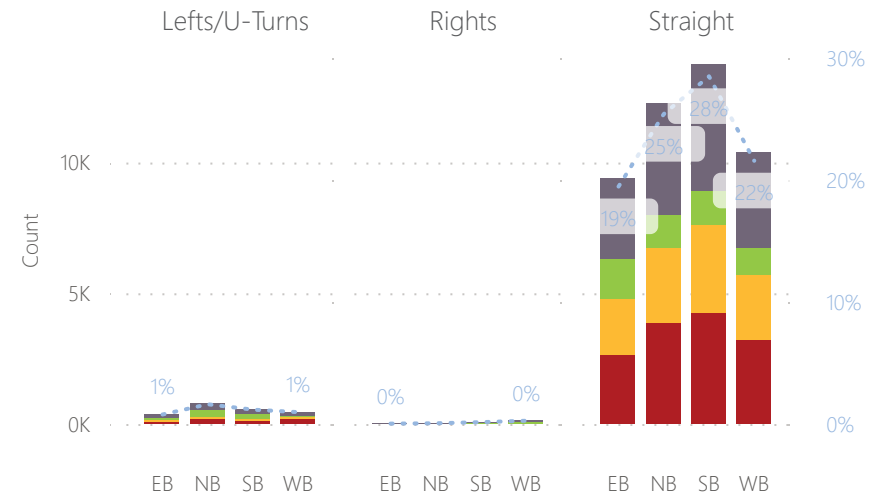


Peak: Evening (4-7pm), Midday (11am-1pm), Morning (6-9am), Other

Split Failures by Direction

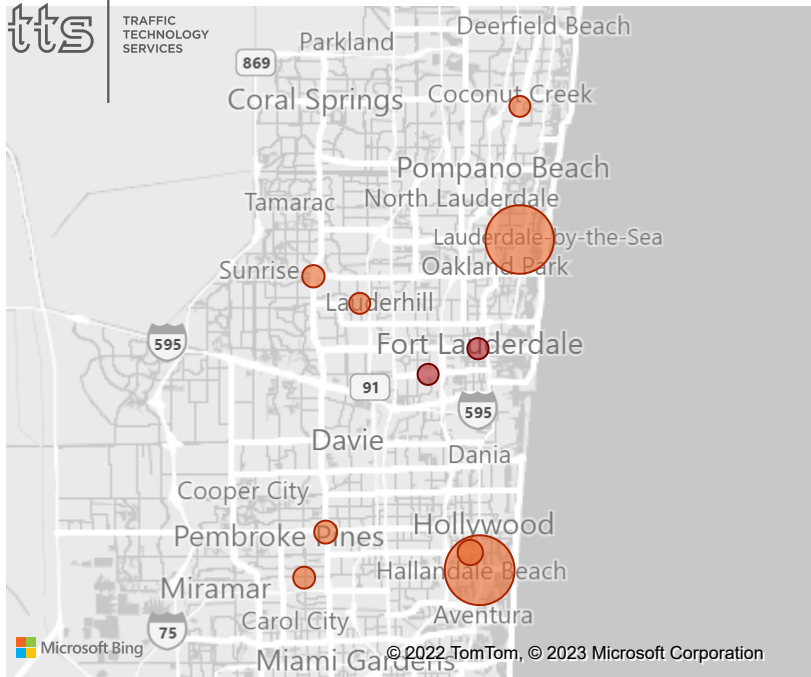


Split Failures by Movement



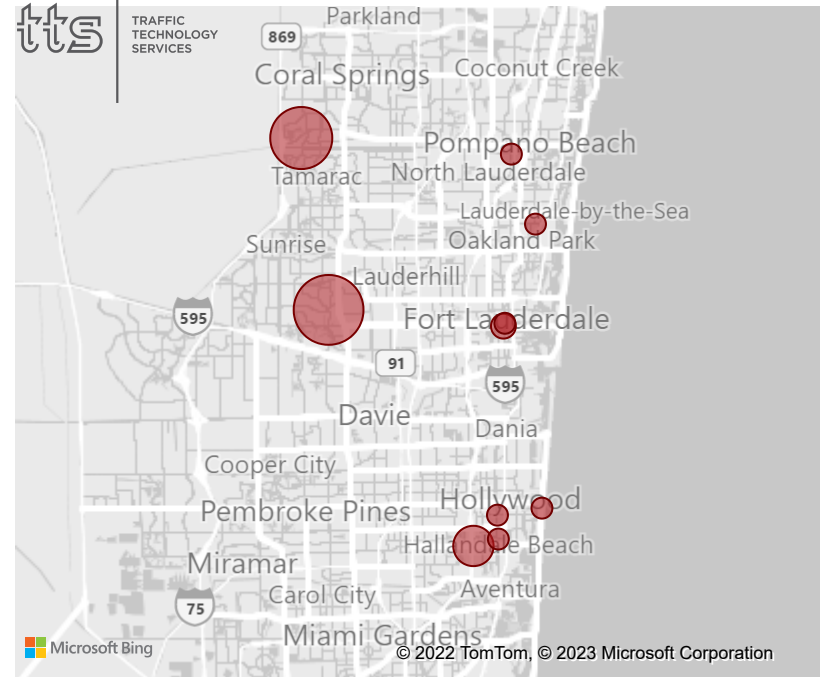
Peak: Evening (4-7pm), Midday (11am-1pm), Morning (6-9am), Other, % of Total

Highest Average Delay



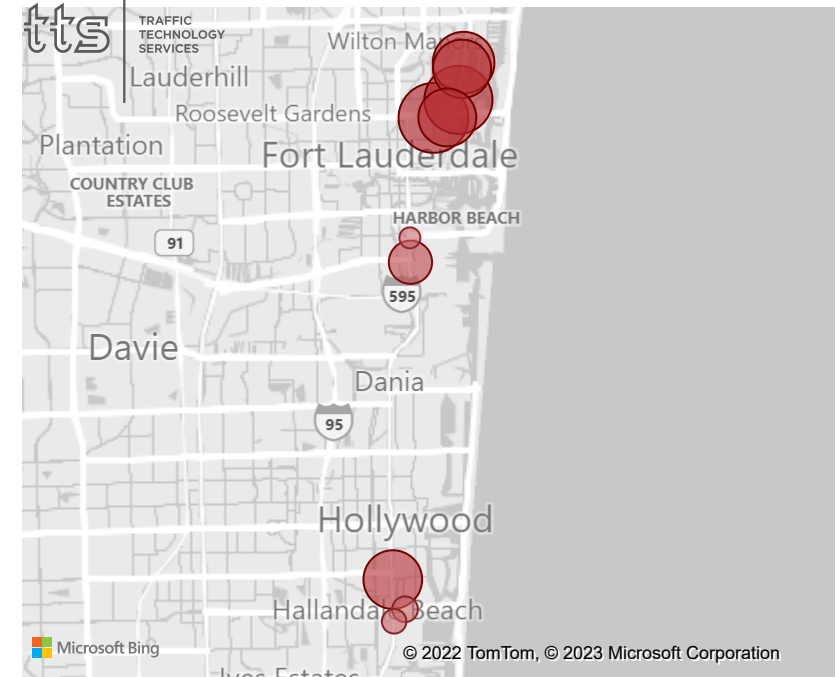
ID	Count	Avg Delay	N/S Street	E/W Street
2123	4	124.0	RIVERLAND RD	Davie Blvd
2054	4	94.8	N Andrews Ave	W Broward Blvd
3167	4	78.0	Pembroke Rd	S Dixie Hwy
1036	4	73.9	N Dixie Hwy	NE 33rd St
3277	4	70.7	SW 89TH AVE	Miramar Pkwy
3084	2	70.0	E Hallandale Beach Blvd	N FEDERAL HWY
1101	2	65.3	E Commercial Blvd	US-1
1077	4	62.9	N University Dr	W OAKLAND PARK BLVD
3014	4	61.5	S UNIVERSITY DR	Pines Blvd
2257	4	60.5	NW 56TH AVE	NW 19th St

Highest Red Arrival %



ID	Count	Red Arrival	N/S Street	E/W Street
3553	4	100%	S Ocean Dr	Monroe St
3095	4	100%	NE 1st Ave	N 3rd St
1174	4	100%	Floranada Rd	NE 18th Ave
3211	4	100%	Washington St	S 21st Ave
1333	4	100%	Race Track Rd	S Andrews Ave
2054	4	100%	N Andrews Ave	W Broward Blvd
1218	2	91%	W ATLANTIC BLVD	Riverside Dr
3069	4	90%	W Hallandale Beach Blvd	I-95
2114	4	90%	SW 1ST AVE	SW 2nd St
2286	2	90%	N Pine Island Rd	CLEARY BLVD

Highest Split Failures



ID	Count	Split Failure	N/S Street	E/W Street
2175	2	31.5%	E Las Olas Blvd	SE 9th Ave
3447	2	20.8%	NW 160th Ave	NW 12th Ave
2121	4	20.0%	POWERLINE RD	NW 19th St
2423	4	20.0%	PURPLE PARROT PLACE	SAWGRASS MILLS CIR
2035	4	18.8%	E Las Olas Blvd	SE 8th Ave
1204	4	18.5%	ROCK ISLAND RD	SOUTHGATE BLVD
3115	4	16.1%	S 20TH AVE	Harrison St
3120	4	16.0%	Hollywood Blvd	20th Ave
2051	4	16.0%	NW 31ST AVE	NW 6TH ST
3114	4	15.4%	S 19TH AVE	Harrison St

Audi Highest Average Delay Top 50

ID	Count %ile	Avg Delay	N/S Street	E/W Street	Weekly Trend
2123		124.0	RIVERLAND RD	Davie Blvd	
2054		94.8	N Andrews Ave	W Broward Blvd	
3167		78.0	Pembroke Rd	S Dixie Hwy	
1036		73.9	N Dixie Hwy	NE 33rd St	
3277		70.7	SW 89TH AVE	Miramar Pkwy	
3084		70.0	E Hallandale Beach Blvd	N FEDERAL HWY	
1101		65.3	E Commercial Blvd	US-1	
1077		62.9	N University Dr	W OAKLAND PARK BLVD	
3014		61.5	S UNIVERSITY DR	Pines Blvd	
2257		60.5	NW 56TH AVE	NW 19th St	
1316		58.2	BANKS RD	COCONUT CREEK PKWY	
3092		58.0	SE 1st Ave	E Dixie Hwy	
2085		57.2	POWERLINE RD	NW 13TH ST	
2201		56.6	N Dixie Hwy	NE 26th St	
1401		56.5	N University Dr	Wiles Rd	
3530		55.3	US 27	Johnson St	
1168		54.2	N University Dr	W Commercial Blvd	
1155		54.1	NW 31ST AVE	W OAKLAND PARK BLVD	
1056		53.6	SR 7	W ATLANTIC BLVD	
3346		53.0	Palm Ave	Miramar Pkwy	
1277		51.6	N Pine Island Rd	NW 50th St	
1336		51.3	N Federal Hwy	E Atlantic Blvd	
2121		51.1	POWERLINE RD	NW 19th St	
3051		51.0	E Hallandale Beach Blvd	S Ocean Dr	
3329		50.5	S Flamingo Rd	SW 33rd St	
3034		50.3	N Flamingo Rd	Pines Blvd	
3318		50.3	N University Dr	SHERIDAN ST	
2197		49.8	S UNIVERSITY DR	W Broward Blvd	
1201		49.7	N Pine Island Rd	W Oakland Park Rd	
1017		49.6	N Powerline Rd	W HILLSBORO BLVD	
2229		49.5	S FEDERAL HWY	SE 17th St	
3040		49.3	S Flamingo Rd	PEMBROKE RD	
3390		48.8	Weston Rd	Indian Trace	
1293		48.8	W Copans Rd	N Andrews Ave	
2358		48.5	N NOB HILL RD	W Broward Blvd	
2039		48.0	NW 27TH AVE	NW 6TH ST	
3265		47.9	N University Dr	STIRLING RD	
1007		47.4	POWERLINE RD	W ATLANTIC BLVD	
3063		47.4	S Flamingo Rd	Griffin Rd	
1004		47.1	NW 31ST AVE	COCONUT CREEK PKWY	
3173		47.0	Sheridan St	S Federal Hwy	
3297		46.9	N Douglas Rd	Taft St	
1160		46.9	SR 7	SOUTHGATE BLVD	
3076		46.8	S UNIVERSITY DR	Griffin Rd	
3039		46.6	Palm Ave	PEMBROKE RD	
1002		46.4	N Federal Hwy	E SAMPLE RD	
3385		45.5	Weston Rd	Royal Palm Blvd	
2129		45.0	S Andrews Ave	SE 24TH ST	
1012		44.5	NW 36th St	Powerline Rd	
1285		44.5	Military Trail	NW 49th Ct	

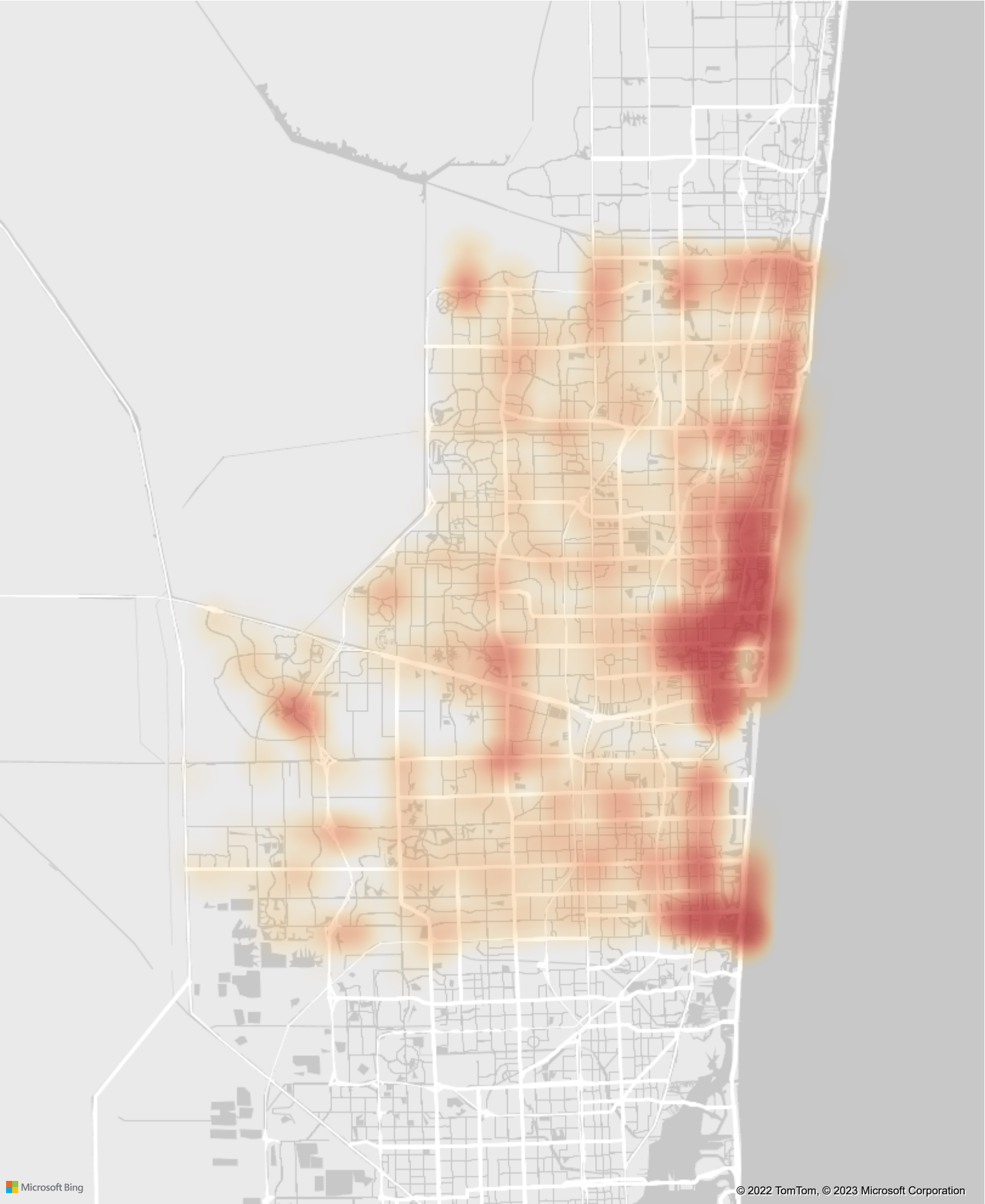
Audi Highest Split Failure Percentage Top 50

ID	Count %ile	Split Failure Measured Rate	Split Failure Rate	N/S Street	E/W Street	Weekly Trend
2175		96.4%	31.5%	E Las Olas Blvd	SE 9th Ave	
3447		90.5%	20.8%	NW 160th Ave	NW 12th Ave	
2121		100.0%	20.0%	POWERLINE RD	NW 19th St	
2423		100.0%	20.0%	PURPLE PARROT PLACE	SAWGRASS MILLS CIR	
2035		100.0%	18.8%	E Las Olas Blvd	SE 8th Ave	
1204		100.0%	18.5%	ROCK ISLAND RD	SOUTHGATE BLVD	
3115		75.0%	16.1%	S 20TH AVE	Harrison St	
3120		100.0%	16.0%	Hollywood Blvd	20th Ave	
2051		100.0%	16.0%	NW 31ST AVE	NW 6TH ST	
3114		100.0%	15.4%	S 19TH AVE	Harrison St	
3164		100.0%	14.9%	N 24TH AVE	Polk St	
3065		100.0%	14.3%	HIATUS RD	Miramar Blvd	
3204		84.6%	13.9%	N 20TH AVE	Tyler St	
3152		83.3%	13.4%	JOHNSON ST	N 46th Ave	
1313		100.0%	13.3%	Inverrary Blvd	Environ Blvd	
2149		82.9%	12.9%	Bayview Dr	NE 26th St	
2054		66.7%	12.5%	N Andrews Ave	W Broward Blvd	
2195		85.1%	12.5%	Middle River Dr	NE 26th St	
1272		87.0%	12.2%	NE 18th Ave	NE 56th St	
2338		92.3%	12.1%	N FORT LAUDERDALE BEACH BLVD	Terramar St	
2374		50.0%	12.0%	CENTRAL PARK PL N	CLEARY BLVD	
3071		87.5%	11.4%	SW 184th Ave	SW 14th St	
1437		100.0%	11.4%	SAWGRASS EXPY SB RAMP	W ATLANTIC BLVD	
3151		75.0%	11.3%	JOHNSON ST	N 35th Ave	
2419		81.1%	11.3%	N FORT LAUDERDALE BEACH BLVD	Riomar St	
1121		66.7%	11.2%	Oakland Park Blvd	Middle River Dr	
2332		75.7%	11.1%	Sawgrass Expwy	W SUNRISE BLVD	
1223		66.7%	11.1%	N Pine Island Rd	NW 81st St	
3579		50.0%	11.0%	SW 178th Ave	PEMBROKE RD	
2033		79.8%	10.6%	E Las Olas Blvd	SE 15th Ave	
2104		69.7%	10.4%	SE 3rd Ave	SE 7th St	
2411		100.0%	10.0%	HIATUS RD	NW 29TH MANOR	
1224		100.0%	10.0%	Inverrary Blvd	NW 44th St	
3197		50.0%	10.0%	N 66TH AVE	Taft St	
2043		70.9%	9.5%	NE 3RD AVE	E Broward Blvd	
2204		87.2%	9.4%	NE 15th Ave	NE 26th St	
3458		95.7%	9.3%	Meadows Blvd	Glades Pkwy	
3051		64.2%	8.9%	E Hallandale Beach Blvd	S Ocean Dr	
1183		66.7%	8.8%	Inverrary Blvd	Inverrary Dr	
3583		82.4%	8.8%	Dykes Rd	SW 29TH ST	
2400		83.6%	8.7%	W 118TH AVE	W Broward Blvd	
3117		75.0%	8.7%	Hollywood Blvd	13th Ave	
2198		48.1%	8.5%	SE 6th Ave	E Las Olas Blvd	
3195		53.8%	8.3%	SR 7	Taft St	
1320		60.0%	8.1%	W Copans Rd	Lyons Rd	
1407		33.3%	8.1%	W ATLANTIC BLVD	Atlantic	
3326		56.3%	8.1%	N 46TH AVE	St Andrews Rd	
3121		57.4%	8.1%	ATLANTIC SHORES BLVD	S Federal Hwy	
1237		66.7%	7.7%	NE 15th Ave	NE 56th St	

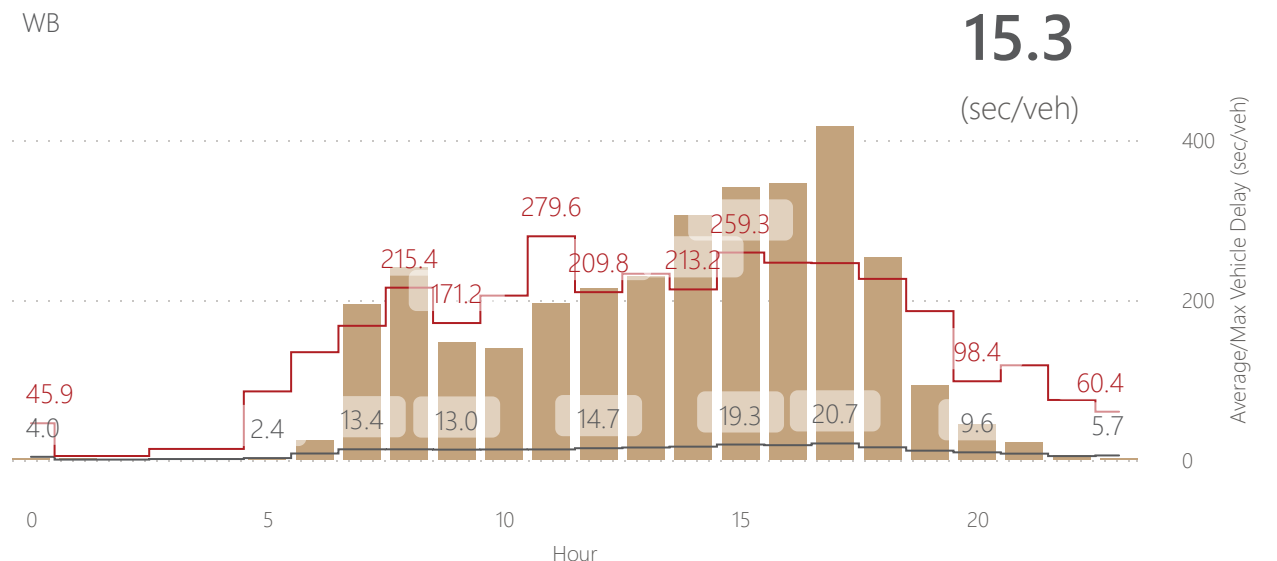
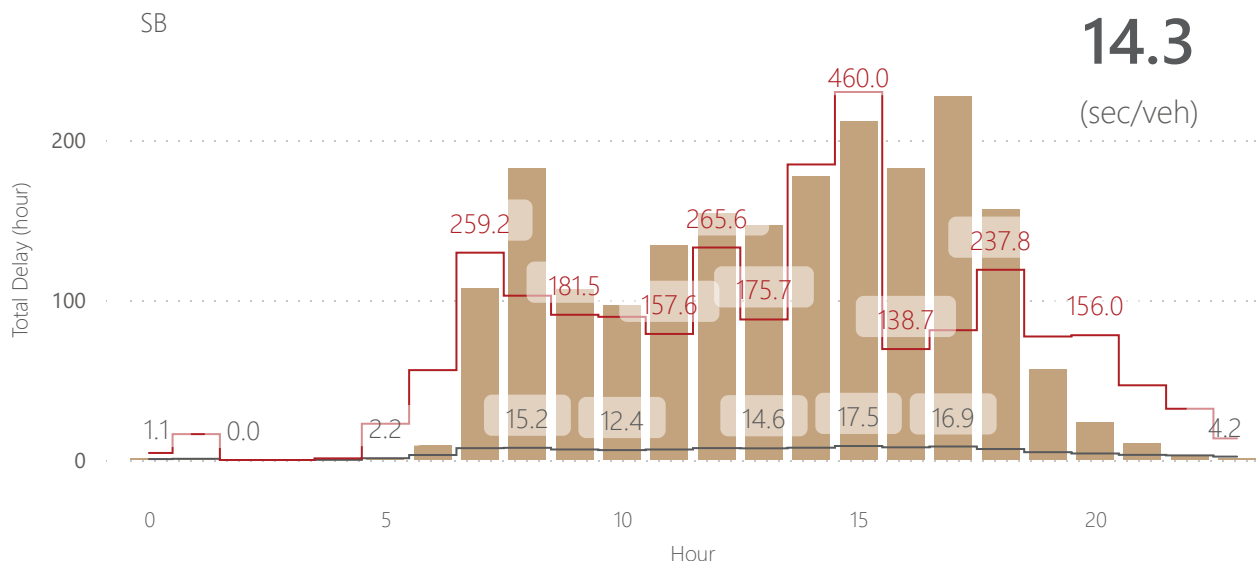
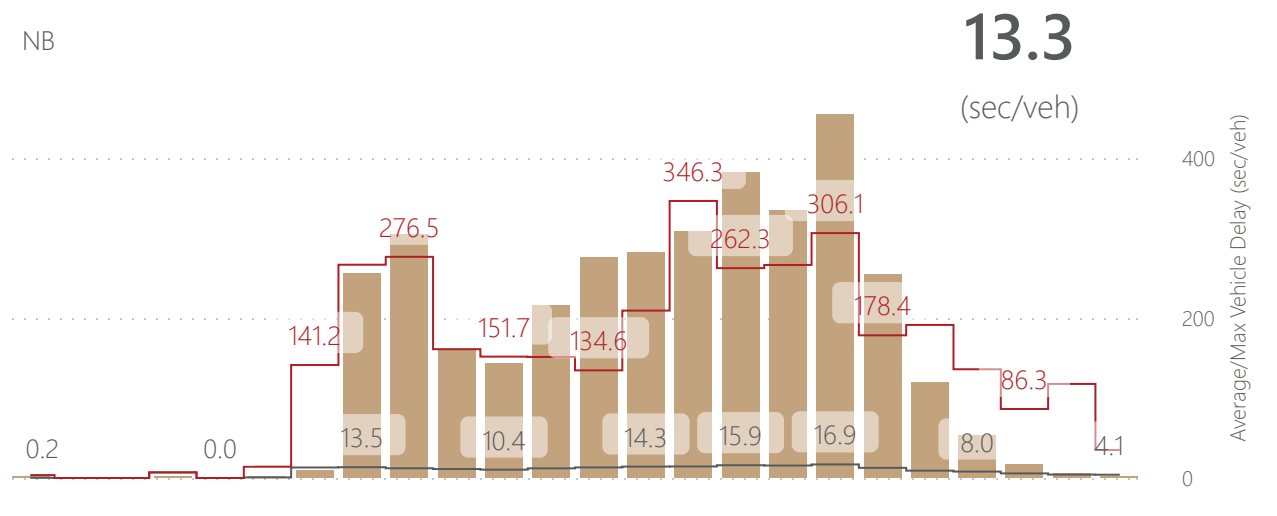
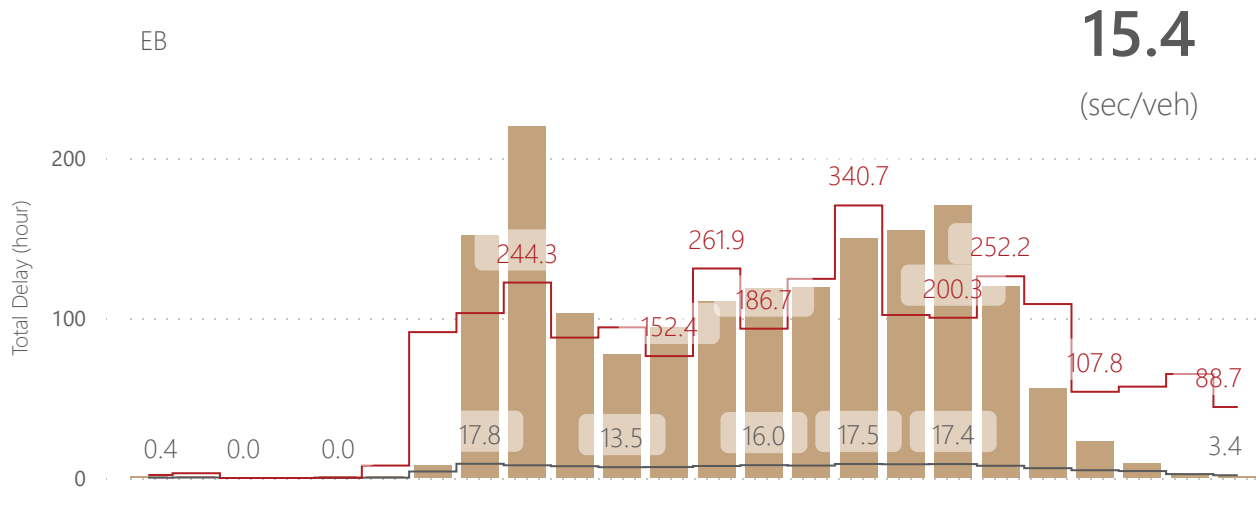
Audi Highest 85th Percentile Speeds Top 50

ID	Count %ile	Max Speed	85th %ile Speed	N/S Street	E/W Street	Weekly Trend
3352	■	72.2	62.7	S FEDERAL HWY	SE 30th St	
3516	■	62.4	62.3	SW 25TH ST	SW 10700 BLK	
1447	■	72.5	62.0	SW 10th St	Waterways Blvd	
2392	■	73.0	59.3	Glades Pkwy	SR 84	
3330	■	62.8	58.8	Orange Dr	HWY 818	
2350	■	73.8	58.5	Indian Trace	SR 84	
1597	■	62.1	58.2	Wiles Rd	SW 43rd Terrace	
3312	■	68.7	58.1	S Flamingo Rd	SW 36TH CT	
1513	■	63.5	57.5	W Sample Rd	Tradewinds Rd	
1519	■	66.0	57.3	NW 18th St	Powerline Rd	
1255	■	63.4	56.8	W McNab Rd	SW 68th Ave	
1235	■	66.7	56.7	POWERLINE RD	GATEWAY DR	
1601	■	67.8	56.6	POWERLINE RD	NW 40th Ct	
2283	■	69.0	56.5	N Flamingo Rd	Pink Flamingo Ln	
3556	■	68.3	56.4	S Flamingo Rd	SW 8TH ST	
2029	■	81.7	55.8	SW 64TH AVE	W SR 84 EB Ramp	
3074	■	73.7	55.5	SW 118th Ave	Griffin Rd	
2085	■	58.0	55.2	POWERLINE RD	NW 13TH ST	
2412	■	68.9	54.9	S HIATUS RD	CLEARY BLVD	
1415	■	64.1	54.8	NW 30th PI	Powerline Rd	
1448	■	64.7	54.7	SW 10th St	Independence Dr	
3530	■	58.0	54.6	US 27	Johnson St	
3341	■	60.9	54.2	GRIFFIN RD	Old Griffin Rd	
2298	■	55.8	54.0	NW 31ST AVE	NW 26th St	
3251	■	61.2	53.8	GRIFFIN RD	SW 90th AVE	
3501	■	64.5	53.7	6800 BLOCK	Griffin Rd	
3124	■	58.3	53.6	Fairmont Ave	Miramar Pkwy	
2271	■	60.4	53.6	N Fig Tree Ln	W Broward Blvd	
1284	■	58.3	53.5	Military Trail	Crystal Lake Dr	
3430	■	62.3	53.5	SW 196th Ave	Pines Blvd	
2191	■	60.3	53.5	E Acre Dr	W Broward Blvd	
3360	■	64.0	53.4	S PINE ISLAND RD	SW 24th St	
1266	■	62.1	53.4	NW 49TH AVE	W Commercial Blvd	
3477	■	64.3	53.3	NW 146th Ave	SHERIDAN ST	
3548	■	53.8	53.2	NW 209th Ave	Pines Blvd	
3523	■	62.3	53.2	GRIFFIN RD	To Orange Dr	
3561	■	64.2	53.2	GRIFFIN RD	I-75 SB	
3531	■	57.4	53.1	I-27	SHERIDAN ST	
3327	■	60.8	53.1	S PINE ISLAND RD	ORANGE GROVE DR	
3446	■	57.6	53.0	SW 106th Ave	HWY 848	
3488	■	60.8	53.0	S Flamingo Rd	Country Glen Dr	
2265	■	55.6	53.0	N Flamingo Rd	Blue Dolphin Blvd	
3504	■	61.6	53.0	SW 88TH AVE	SW 36TH ST	
1287	■	59.1	53.0	N University Dr	NW 78th St	
3222	■	61.2	53.0	HWY 818	SW 106th Ave	
2329	■	59.4	52.8	NW 12TH ST	N PINE ISLAND RD	
3481	■	56.4	52.8	NW 172nd Ave	NW 9th St	
3559	■	57.2	52.8	NW 202nd Ave	Pines Blvd	
1533	■	58.4	52.7	W HILLSBORO BLVD	NW 45th Ave	
3462	■	63.2	52.7	NW 136TH AVE	SHERIDAN ST	

Audi Vehicle Count Heatmap



Delay by Hour by Direction



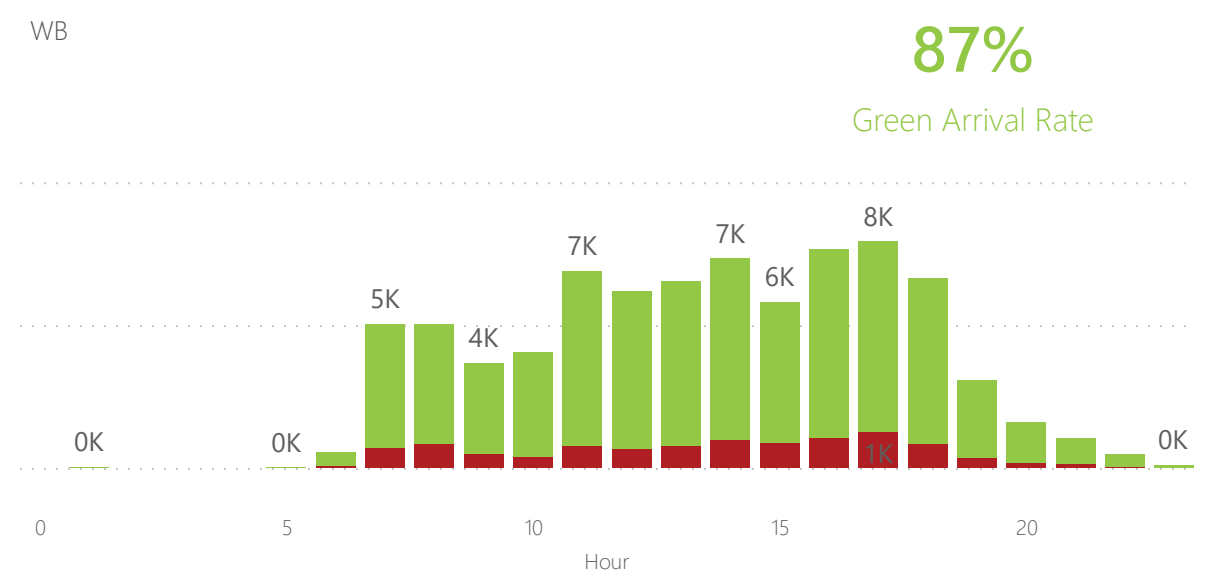
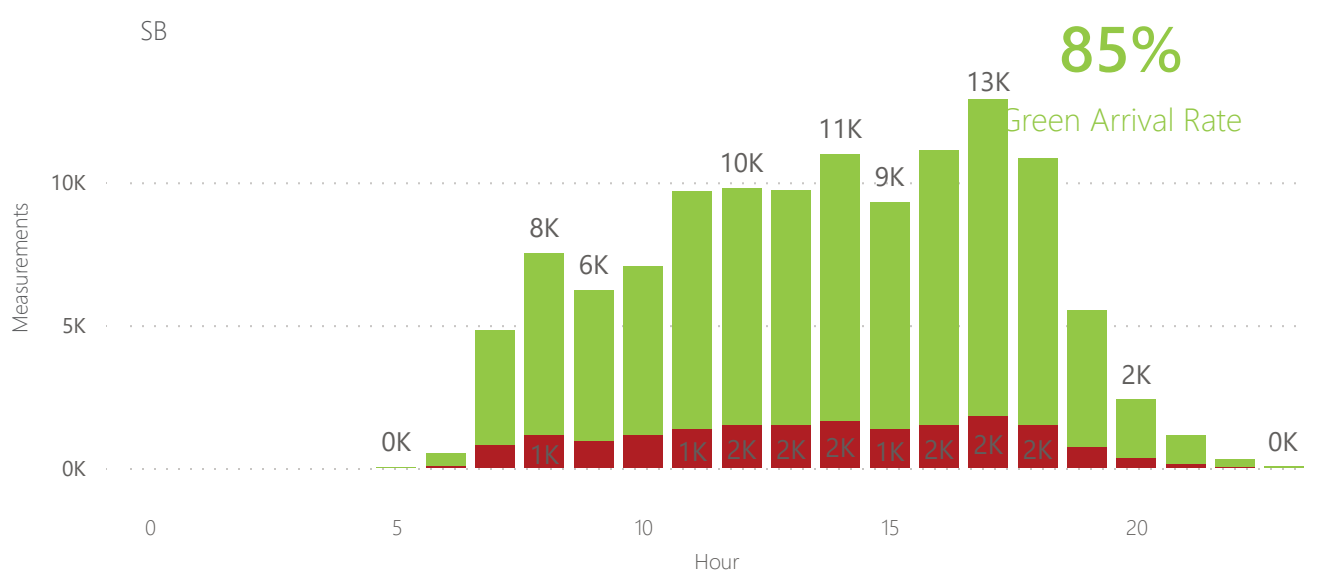
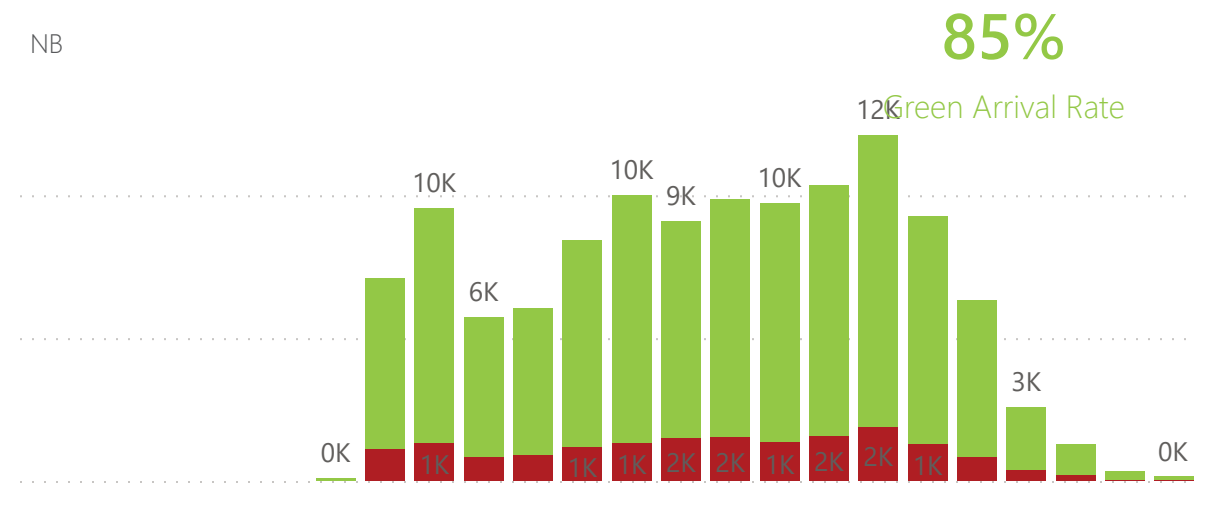
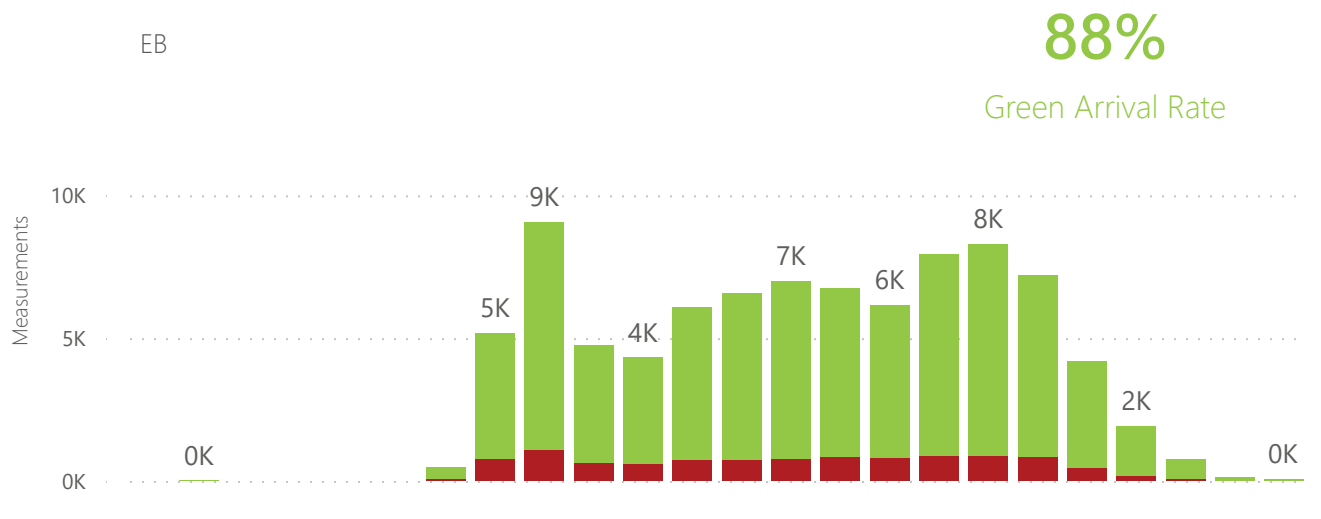
● Total Delay (hour) — Avg — Max



14.4
Average Delay (sec/veh)

Intersection ID
 Year, Quarter,...
 Day Groups
 Peak Period
 Movement

Arrivals by Hour by Direction



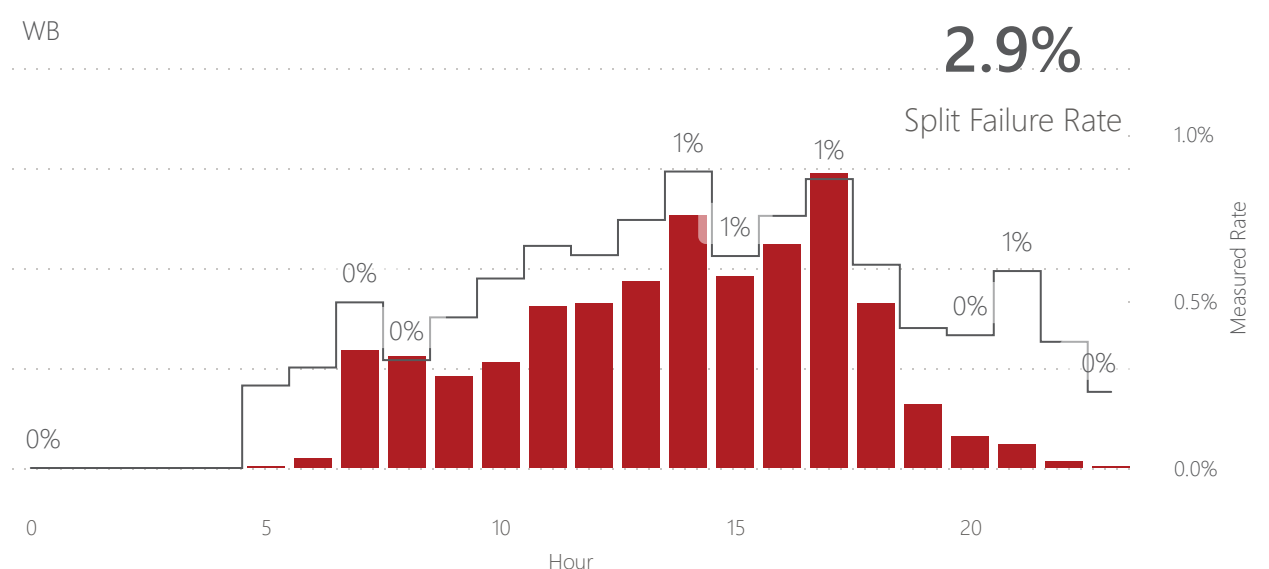
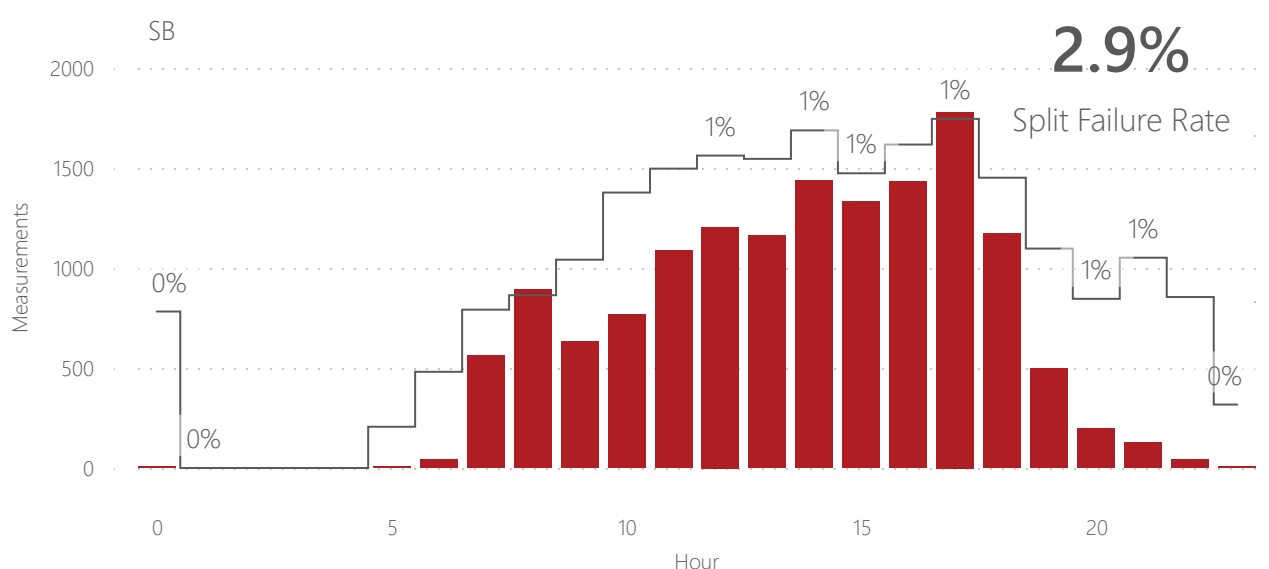
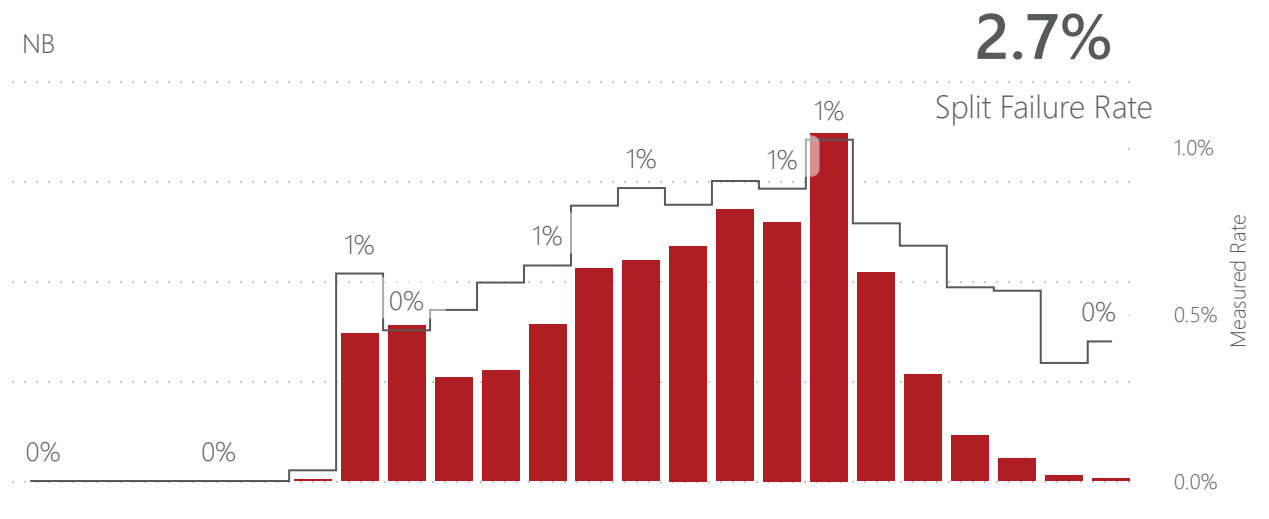
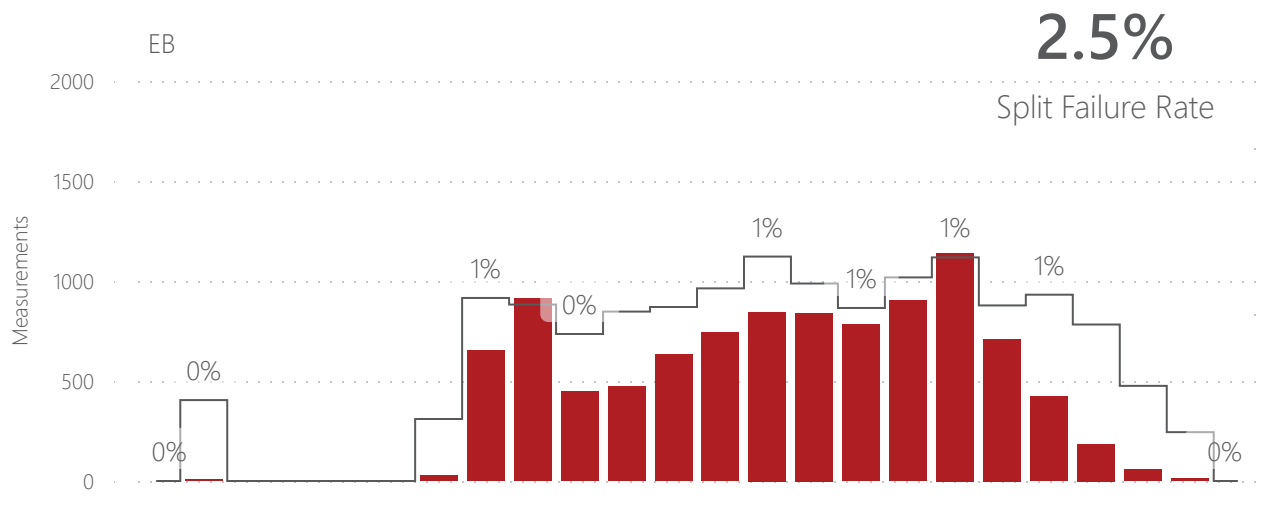
● Red Arrival ● Green Arrival — Total



86% Green Arrival Rate
14% Red Arrival Rate

Intersection ID Year, Quarter,... Day Groups Peak Period Phase

Split Failures by Hour by Direction



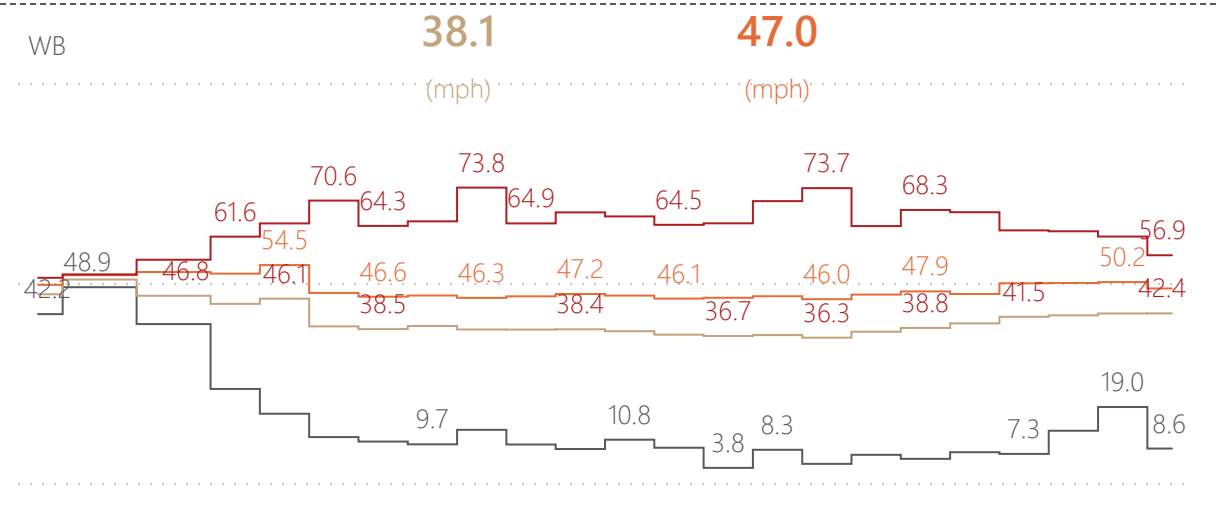
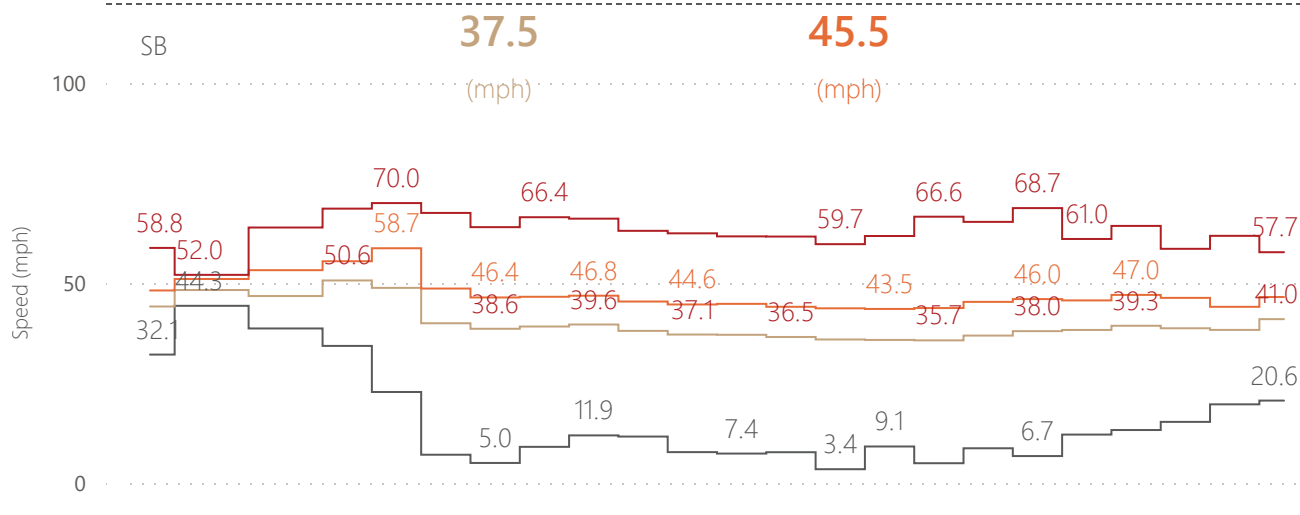
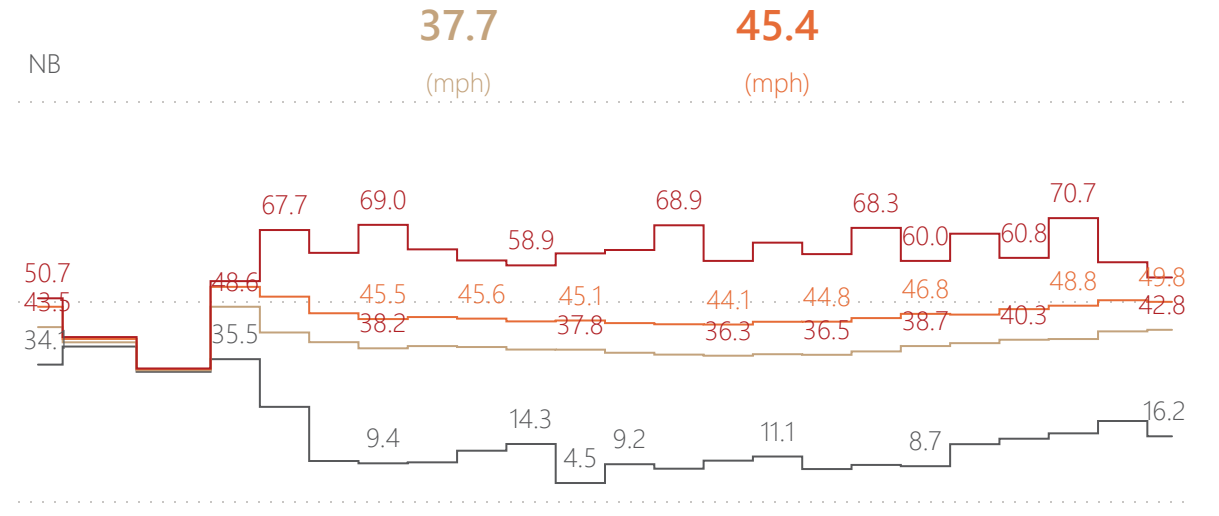
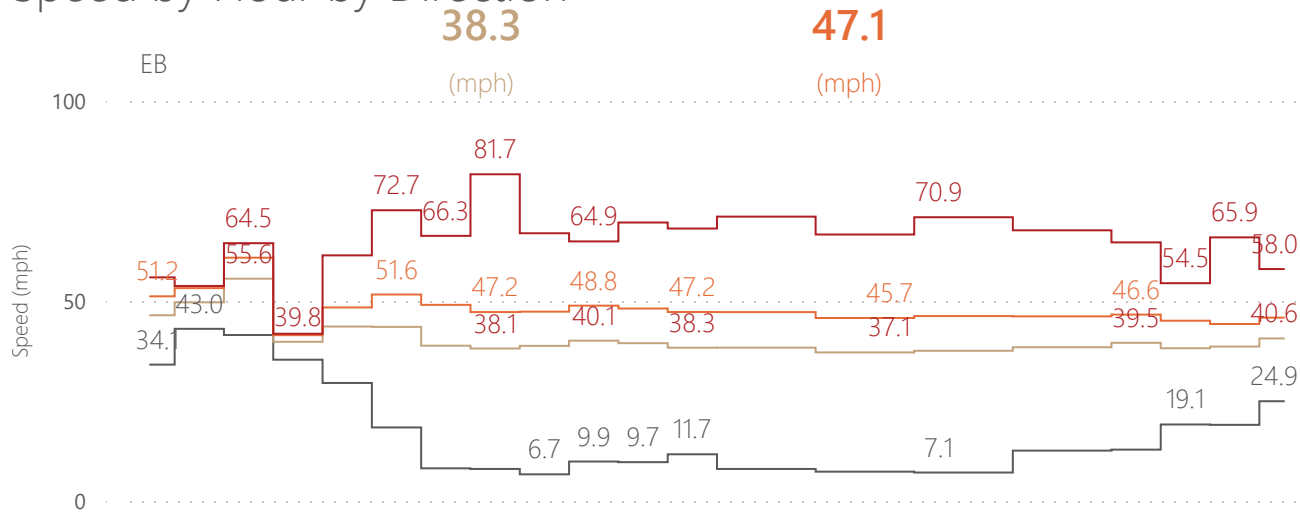
● Split Failure — Split Failure Rate



2.7%
Split Failure Rate

Intersection ID
 Year, Quarter,...
 Day Groups
 Peak Period
 Movement

Speed by Hour by Direction



— Min — Avg — 85th %ile — Max



38.0 **46.3**
Avg Speed (mph) 85th% Speed (mph)

Intersection ID
All

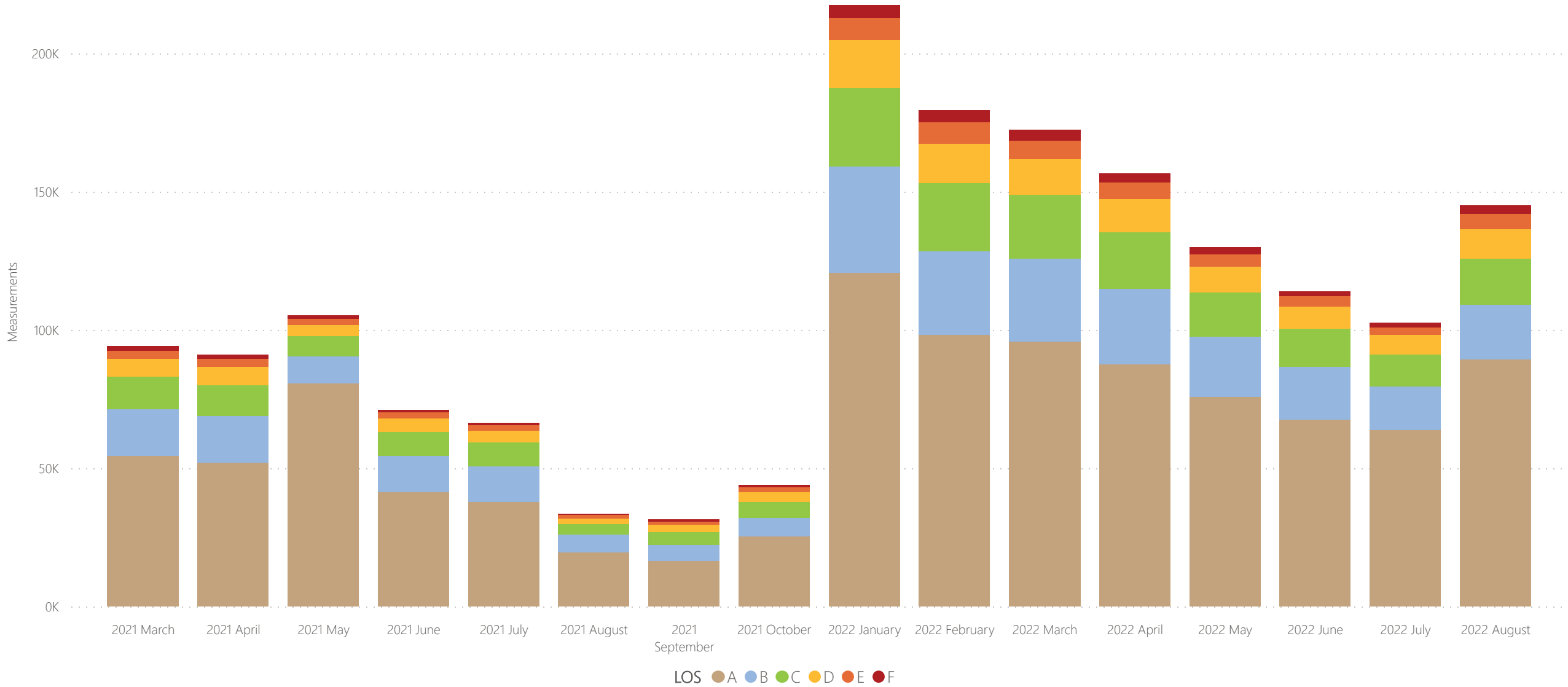
Year, Quarter, ...
All

Day Groups
All

Peak Period
All

Distance
All

Crossings by Month



1.8M
Total Crossings

88%
LOS C or Better

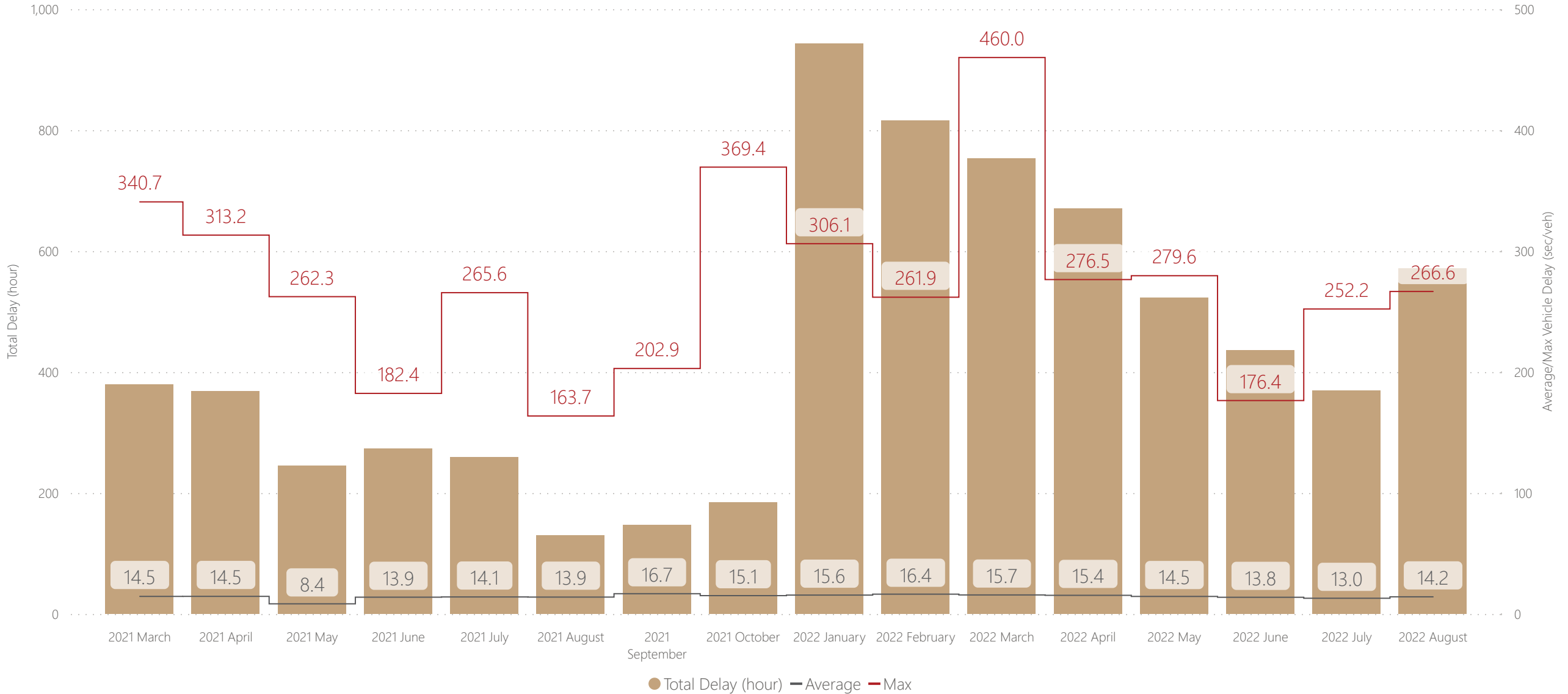
Intersection ID

Day Groups

Peak Period

Movement

Delay by Month

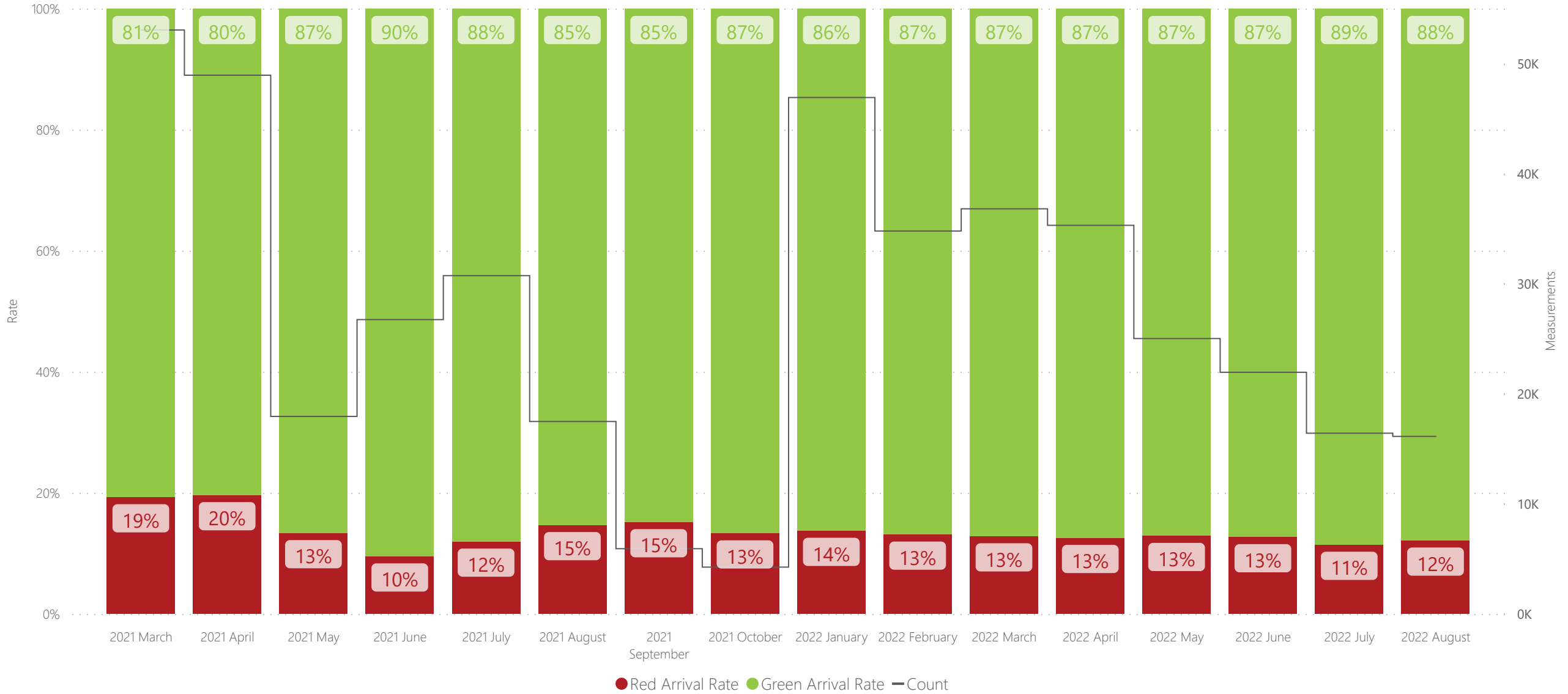


14.4

Average Delay (sec/veh)

Intersection ID
 Day Groups
 Peak Period
 Movement

Arrivals by Month

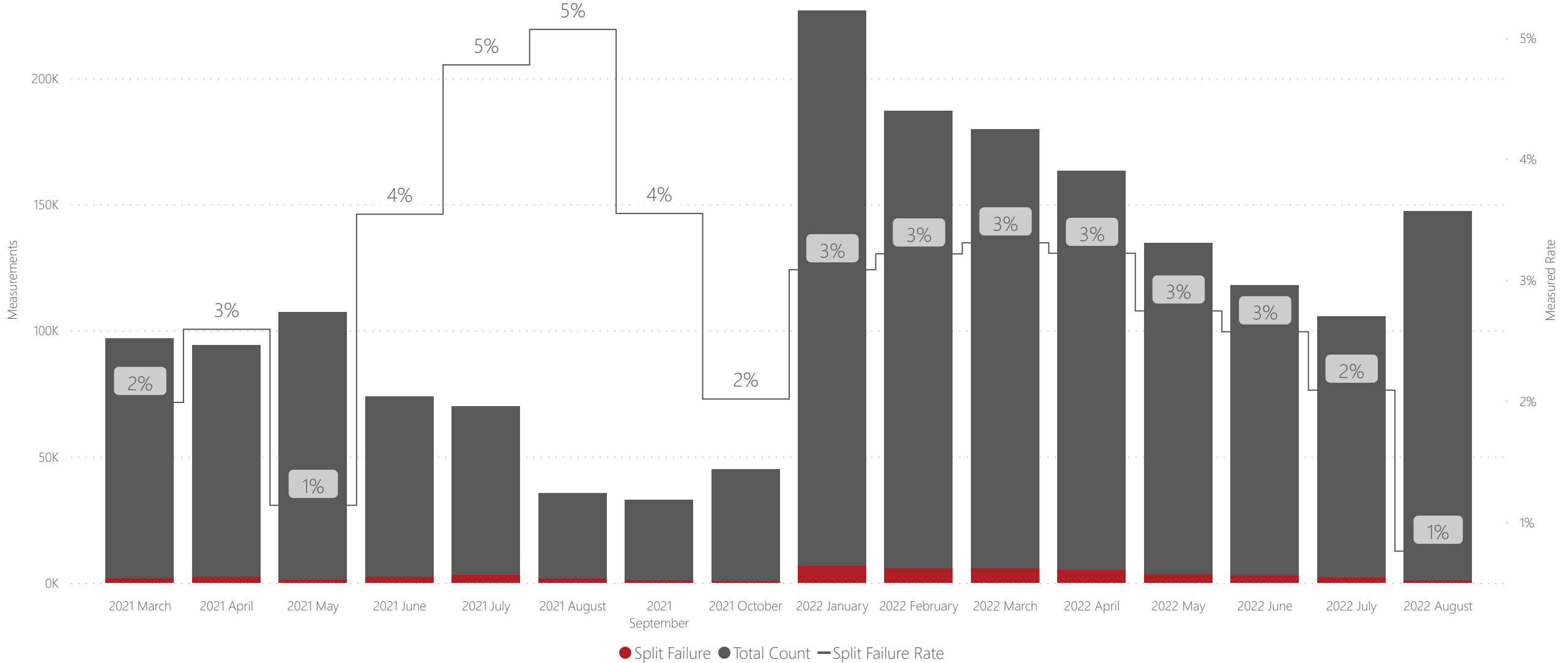


86%
Green Arrival Rate

14%
Red Arrival Rate

Intersection ID
 Day Groups
 Peak Period
 Phase

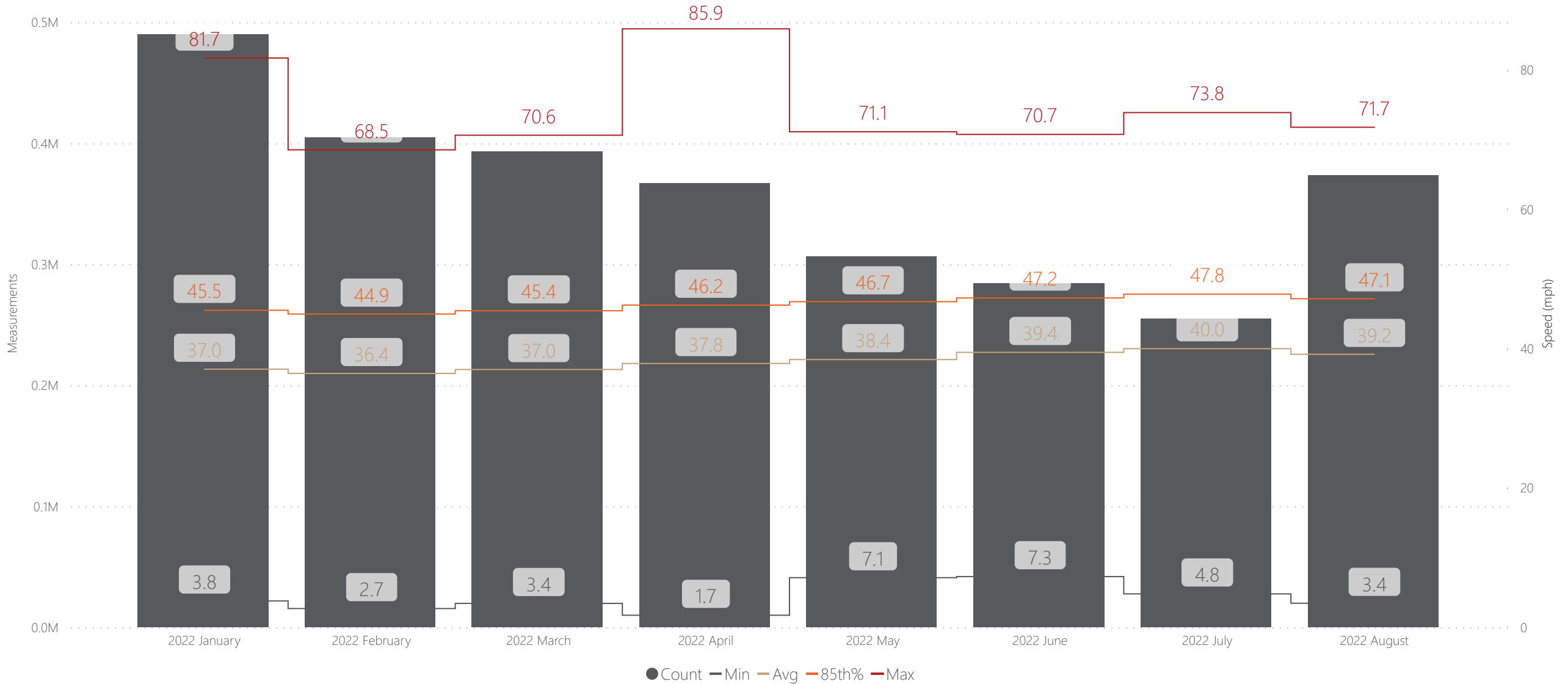
Split Failures by Month



2.7%
Split Failure Rate

Intersection ID
 Day Groups
 Peak Period
 Movement

Speed by Month



38.0

Average Speed (mph)

46.3

85th% Speed (mph)

Intersection ID
 Day Gro...
 Peak Peri...
 Direction
 Distance