

FAILED QUERIES

baseline unpartitioned parquet

benchmark query mean_duration std_dev

agg slice unpartitioned parquet

benchmark query mean_duration std_dev

SUMMARY

	label	TPCH wall time	TPC-DS wall time	TPCH CPU time	TPC-DS CPU time	TPCH physicalInputDataSize	TPC-DS physicalInputDataSize	TPCH internalNetworkInputDataSize	TPC-DS internalNetworkInputDataSize	TPCH peak memory	TPC-DS peak memory	TPCH planning time	TPC-DS planning time
0	baseline unpartitioned parquet	559.933500	0	39556.700000	0	1.695 TiB	0	1.586 TiB	0	654.266 GiB	0	2.557918	0
1	agg slice unpartitioned parquet	545.227833	0	37893.400000	0	1.695 TiB	0	1.586 TiB	0	652.112 GiB	0	2.572520	0

Store sales flat Comparison (DURATION)

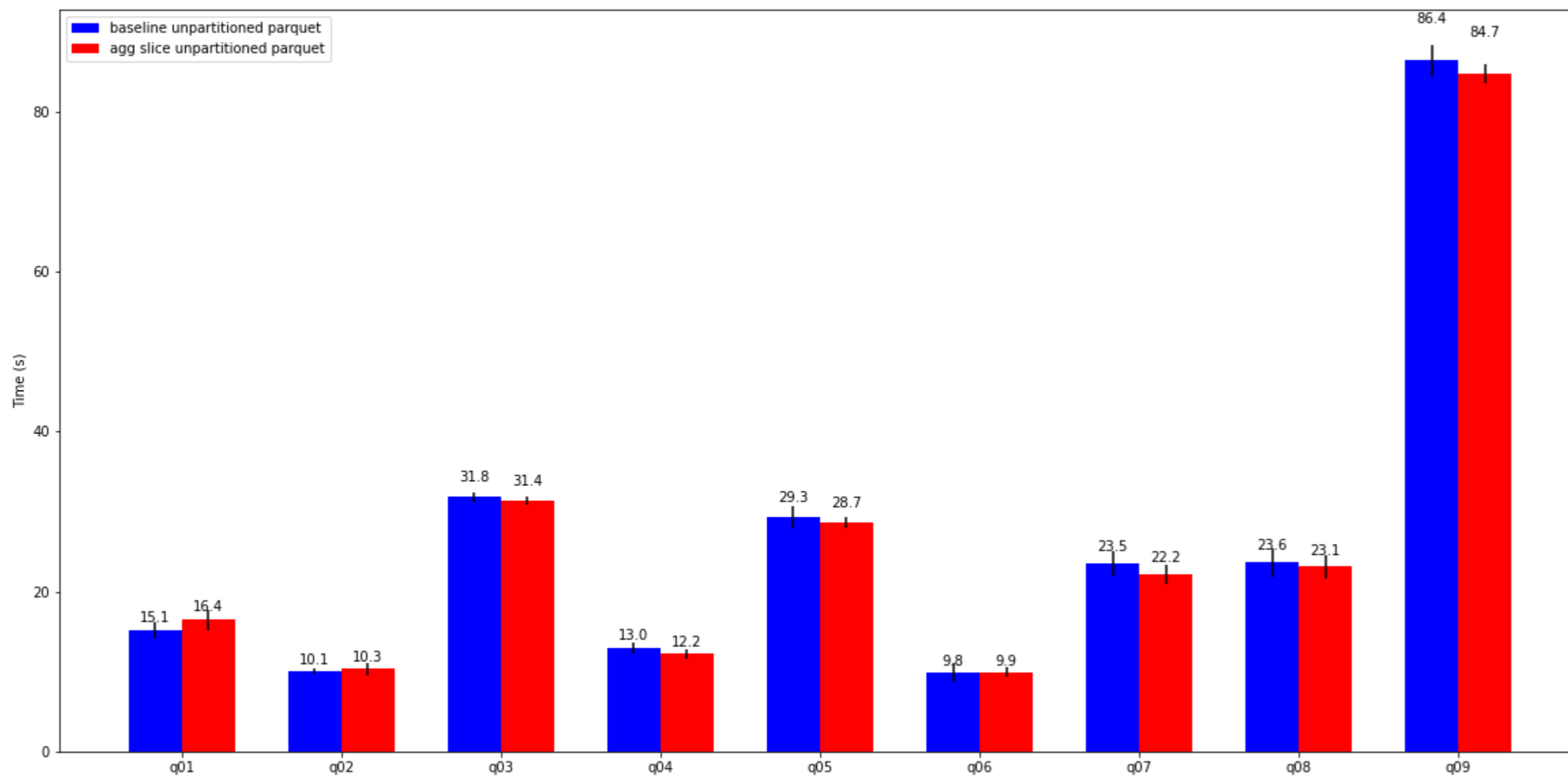
Store sales flat Comparison (CPU)

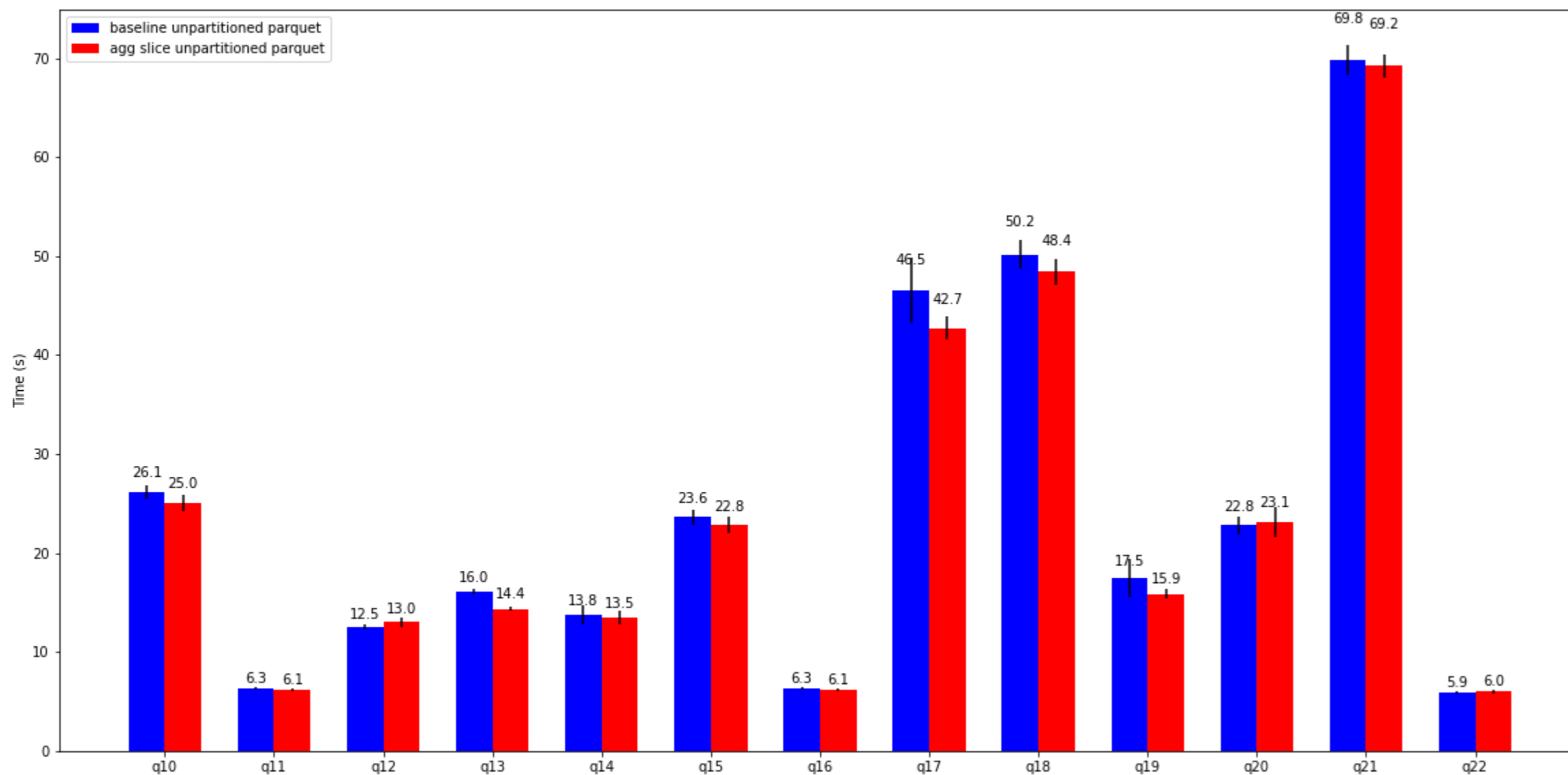
Insert Comparison (DURATION)

Insert Comparison (CPU)

Insert Comparison (PEAK MEMORY)

TPC-H Comparison (DURATION)



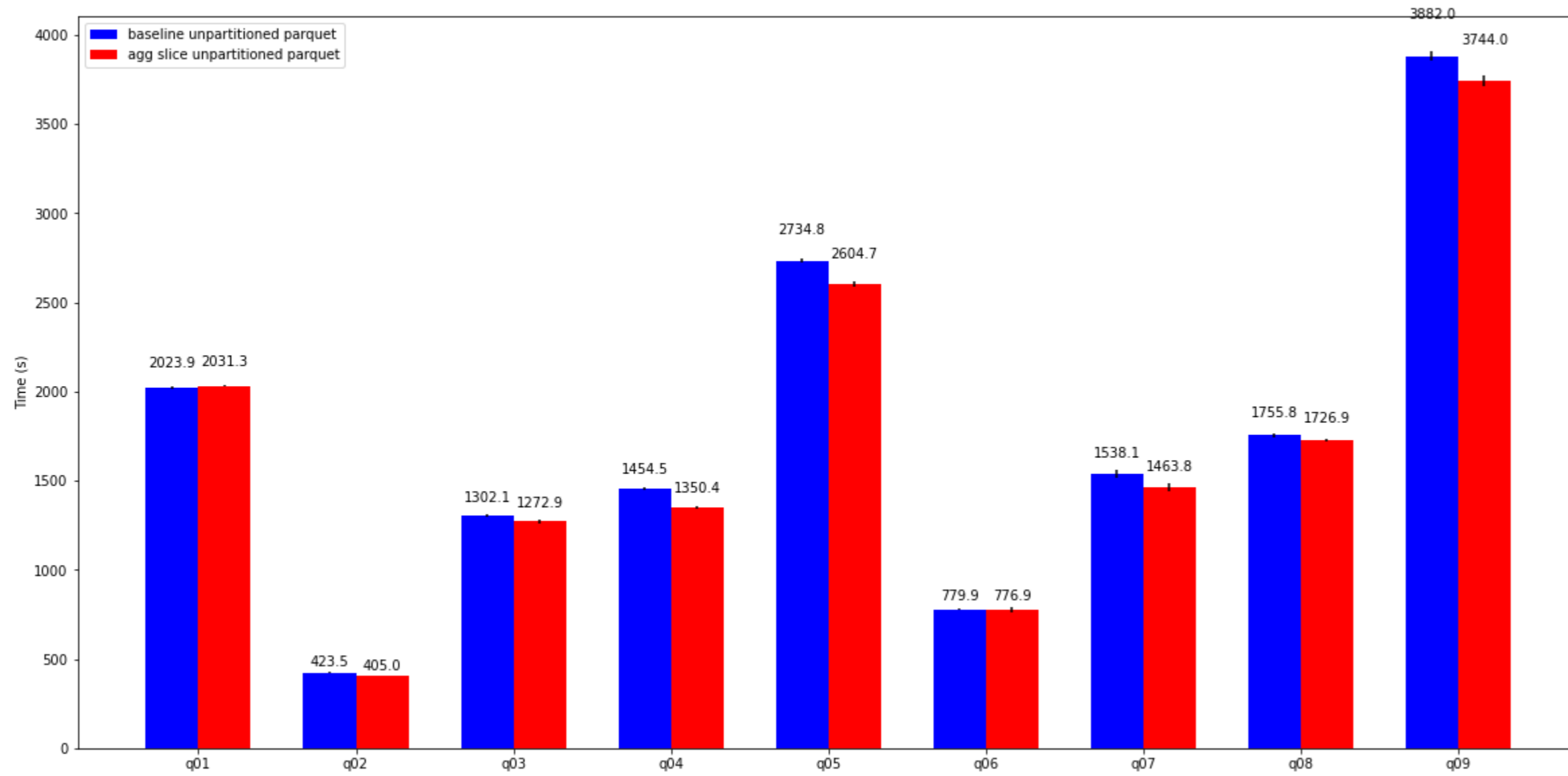


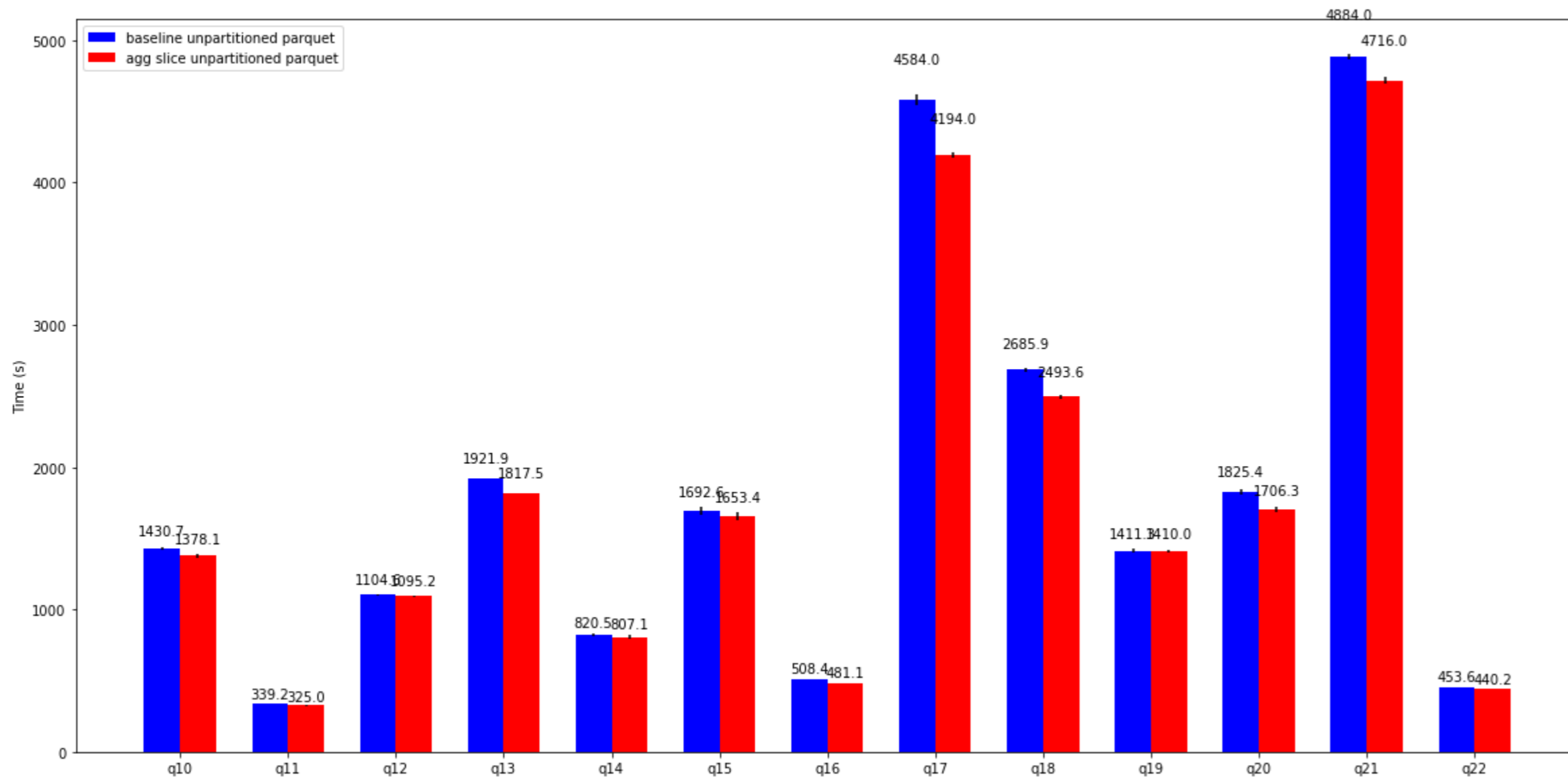
query	baseline unpartitioned parquet mean	baseline unpartitioned parquet std.dev	agg slice unpartitioned parquet mean	agg slice unpartitioned parquet std.dev
0 presto/tpch: q01	15.128833	0.970383	16.444000	1.278136
1 presto/tpch: q02	10.051333	0.277084	10.319500	0.746653
2 presto/tpch: q03	31.805833	0.586279	31.361000	0.512928
3 presto/tpch: q04	12.966833	0.704278	12.170500	0.625627
4 presto/tpch: q05	29.317667	1.390269	28.684500	0.694210
5 presto/tpch: q06	9.845167	1.158299	9.901333	0.616702
6 presto/tpch: q07	23.460500	1.554617	22.171833	1.179491
7 presto/tpch: q08	23.613333	1.756354	23.084167	1.393211
8 presto/tpch: q09	86.383667	1.944942	84.748833	1.154875
9 presto/tpch: q10	26.125333	0.700194	25.020167	0.799761
10 presto/tpch: q11	6.263667	0.141733	6.134833	0.150943
11 presto/tpch: q12	12.490833	0.290836	13.029167	0.472513
12 presto/tpch: q13	16.041333	0.260541	14.351667	0.255712
13 presto/tpch: q14	13.761667	0.961408	13.485333	0.691305
14 presto/tpch: q15	23.620000	0.714829	22.809500	0.812116
15 presto/tpch: q16	6.323333	0.184730	6.142333	0.131074
16 presto/tpch: q17	46.537333	3.263419	42.707167	1.164220
17 presto/tpch: q18	50.183333	1.402710	48.431833	1.287113

query	baseline unpartitioned parquet mean	baseline unpartitioned parquet std.dev	agg slice unpartitioned parquet mean	agg slice unpartitioned parquet std.dev
18 presto/tpch: q19	17.492833	1.973898	15.883667	0.462848
19 presto/tpch: q20	22.793833	0.868427	23.140833	1.523273
20 presto/tpch: q21	69.823500	1.510189	69.215333	1.120203
21 presto/tpch: q22	5.903333	0.110896	5.990333	0.201781

TPC-DS Comparison (DURATION)

TPC-H Comparison (CPU)



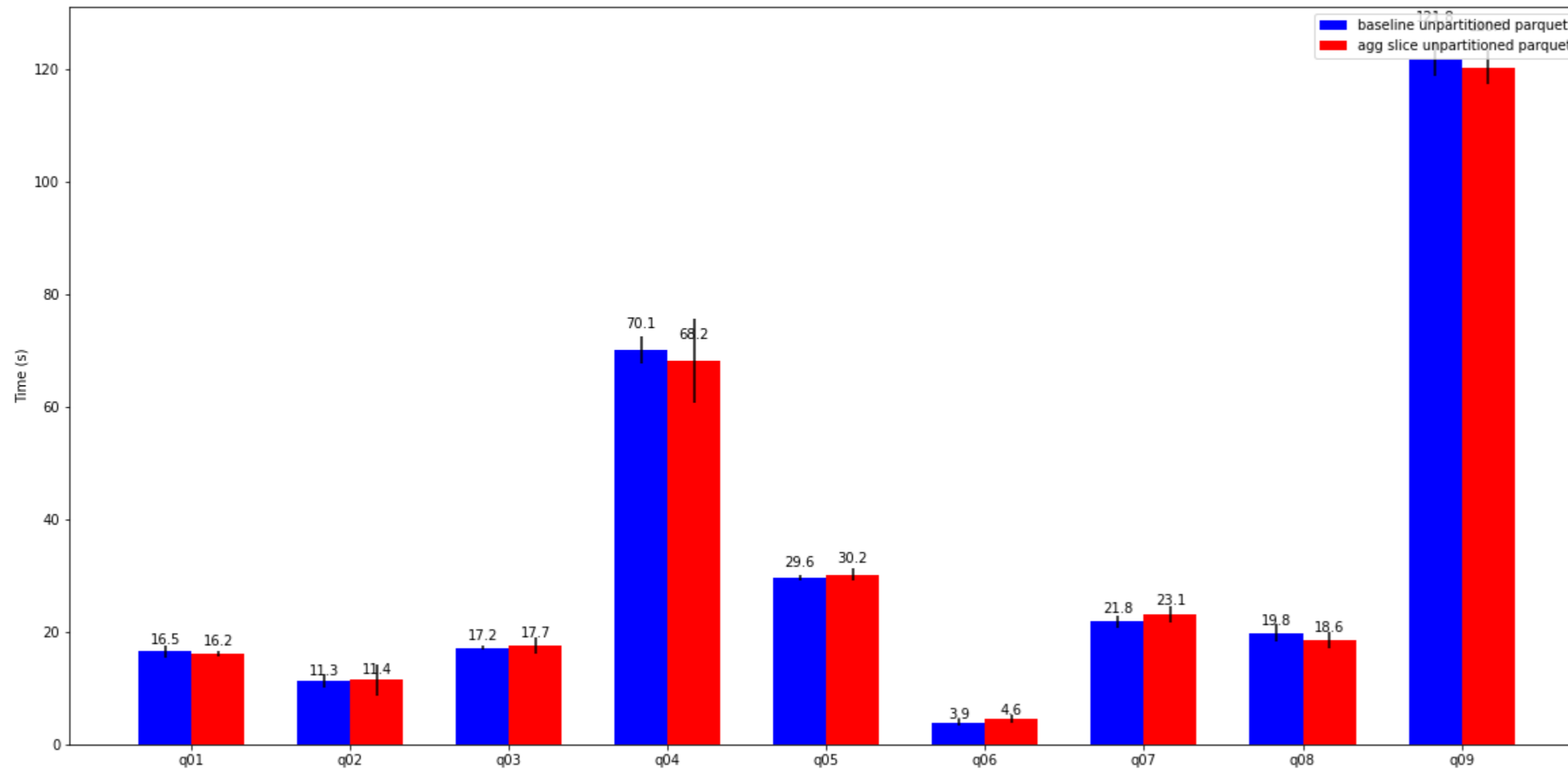


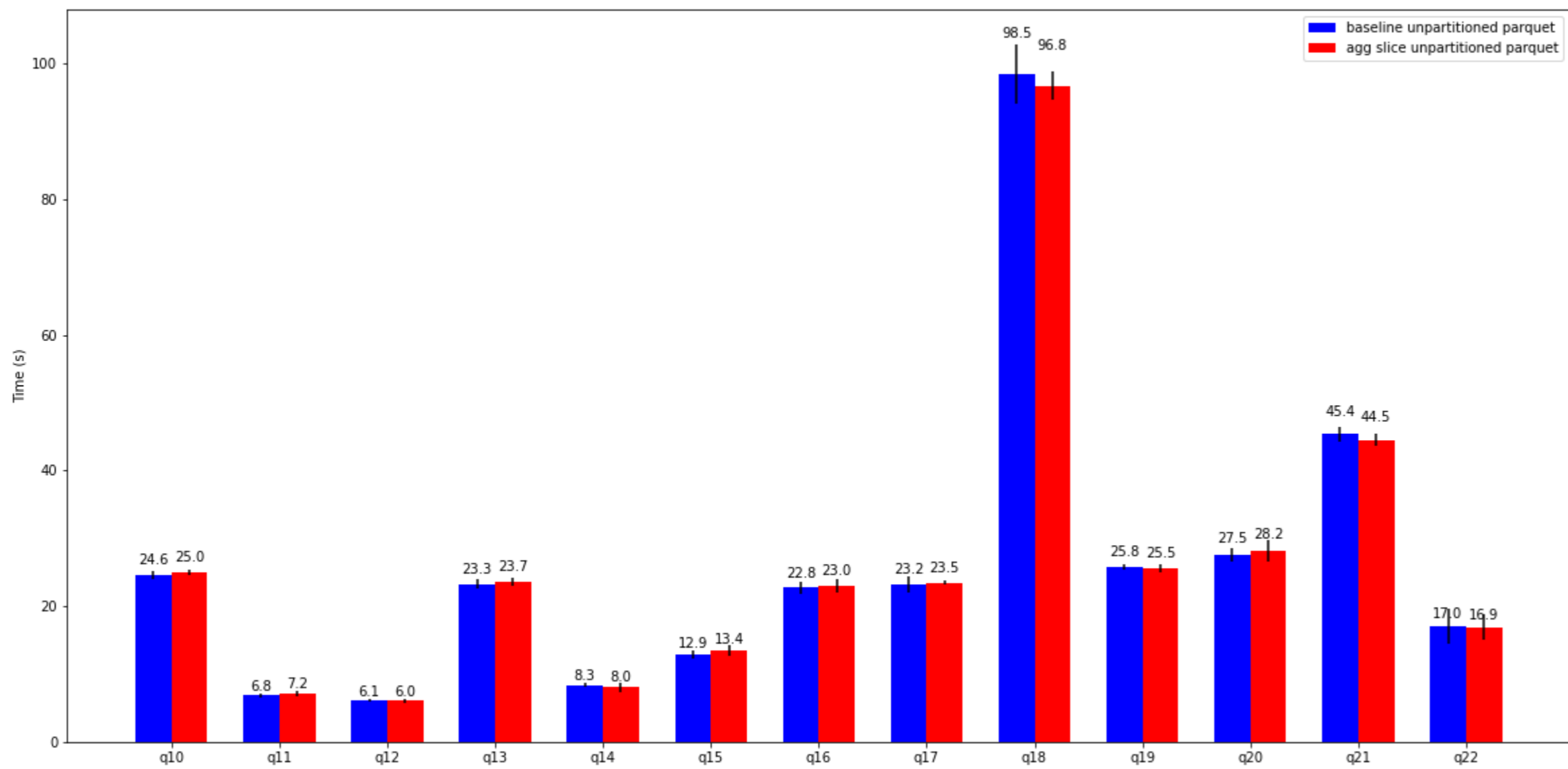
query	baseline unpartitioned parquet mean	baseline unpartitioned parquet std.dev	agg slice unpartitioned parquet mean	agg slice unpartitioned parquet std.dev
0 presto/tpch: q01	2023.9	5.822371	2031.3	4.766131
1 presto/tpch: q02	423.5	2.193627	405.0	2.429815
2 presto/tpch: q03	1302.1	7.621811	1272.9	10.095345
3 presto/tpch: q04	1454.5	9.527854	1350.4	5.662508
4 presto/tpch: q05	2734.8	14.152880	2604.7	12.752882
5 presto/tpch: q06	779.9	3.859015	776.9	14.276554
6 presto/tpch: q07	1538.1	21.188582	1463.8	20.469294
7 presto/tpch: q08	1755.8	13.061087	1726.9	9.803469
8 presto/tpch: q09	3882.0	27.099815	3744.0	32.199379
9 presto/tpch: q10	1430.7	9.339593	1378.1	13.092746
10 presto/tpch: q11	339.2	1.959592	325.0	0.619677
11 presto/tpch: q12	1104.6	4.889172	1095.2	3.991992
12 presto/tpch: q13	1921.9	1.583667	1817.5	3.021920
13 presto/tpch: q14	820.5	9.827919	807.1	13.370266
14 presto/tpch: q15	1692.6	25.441698	1653.4	27.695487
15 presto/tpch: q16	508.4	1.296148	481.1	1.033441
16 presto/tpch: q17	4584.0	37.180640	4194.0	19.718012
17 presto/tpch: q18	2685.9	15.300588	2493.6	11.076462

query	baseline unpartitioned parquet mean	baseline unpartitioned parquet std.dev	agg slice unpartitioned parquet mean	agg slice unpartitioned parquet std.dev
18 presto/tpch: q19	1411.3	12.056368	1410.0	13.205453
19 presto/tpch: q20	1825.4	18.327684	1706.3	18.784568
20 presto/tpch: q21	4884.0	18.590320	4716.0	22.768399
21 presto/tpch: q22	453.6	1.738965	440.2	0.819756

TPC-DS Comparison (CPU)

TPC-H Comparison (Peak memory)





query	baseline unpartitioned parquet mean	baseline unpartitioned parquet std.dev	agg slice unpartitioned parquet mean	agg slice unpartitioned parquet std.dev
0 presto/tpch: q01	16.529 GiB	1.150 GiB	16.179 GiB	503.969 MiB
1 presto/tpch: q02	11.313 GiB	1.163 GiB	11.417 GiB	2.719 GiB
2 presto/tpch: q03	17.155 GiB	424.568 MiB	17.651 GiB	1.460 GiB
3 presto/tpch: q04	70.107 GiB	2.327 GiB	68.231 GiB	7.412 GiB
4 presto/tpch: q05	29.564 GiB	507.029 MiB	30.214 GiB	1.051 GiB
5 presto/tpch: q06	3.915 GiB	676.036 MiB	4.582 GiB	788.595 MiB
6 presto/tpch: q07	21.802 GiB	1.091 GiB	23.102 GiB	1.377 GiB
7 presto/tpch: q08	19.819 GiB	1.523 GiB	18.550 GiB	1.365 GiB
8 presto/tpch: q09	121.835 GiB	3.030 GiB	120.424 GiB	2.914 GiB
9 presto/tpch: q10	24.637 GiB	580.538 MiB	24.982 GiB	466.401 MiB
10 presto/tpch: q11	6.816 GiB	313.133 MiB	7.190 GiB	392.946 MiB
11 presto/tpch: q12	6.076 GiB	221.719 MiB	6.037 GiB	232.460 MiB
12 presto/tpch: q13	23.301 GiB	780.651 MiB	23.693 GiB	606.189 MiB
13 presto/tpch: q14	8.324 GiB	303.387 MiB	8.016 GiB	704.078 MiB
14 presto/tpch: q15	12.890 GiB	573.253 MiB	13.426 GiB	784.697 MiB
15 presto/tpch: q16	22.752 GiB	901.535 MiB	22.995 GiB	0.944 GiB
16 presto/tpch: q17	23.240 GiB	1.164 GiB	23.477 GiB	273.031 MiB
17 presto/tpch: q18	98.487 GiB	4.366 GiB	96.770 GiB	2.139 GiB

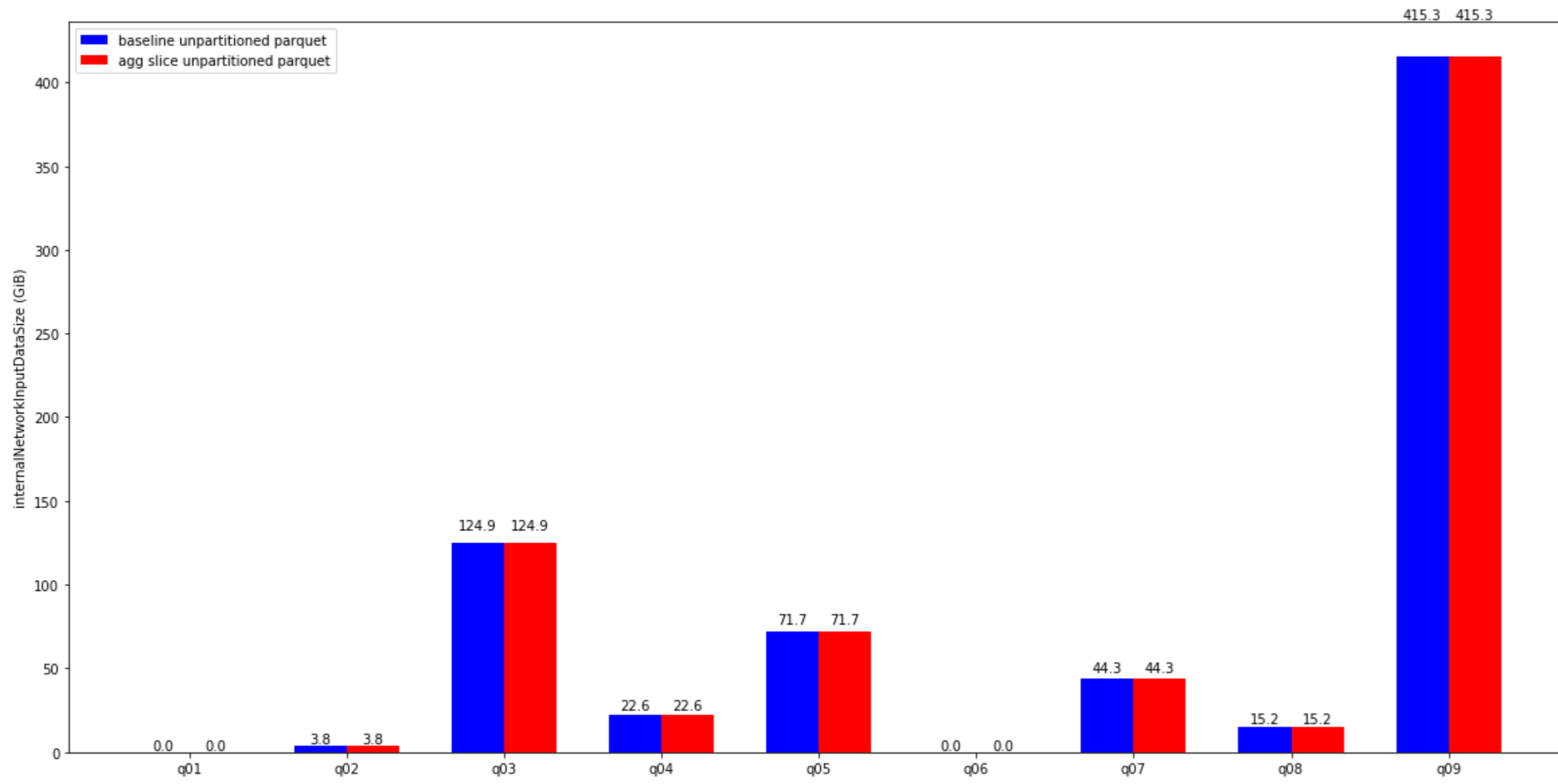
	query	baseline unpartitioned parquet mean	baseline unpartitioned parquet std.dev	agg slice unpartitioned parquet mean	agg slice unpartitioned parquet std.dev
18	presto/tpch: q19	25.780 GiB	413.251 MiB	25.529 GiB	647.073 MiB
19	presto/tpch: q20	27.508 GiB	0.976 GiB	28.239 GiB	1.608 GiB
20	presto/tpch: q21	45.368 GiB	1.173 GiB	44.522 GiB	903.812 MiB
21	presto/tpch: q22	17.049 GiB	2.627 GiB	16.888 GiB	1.904 GiB

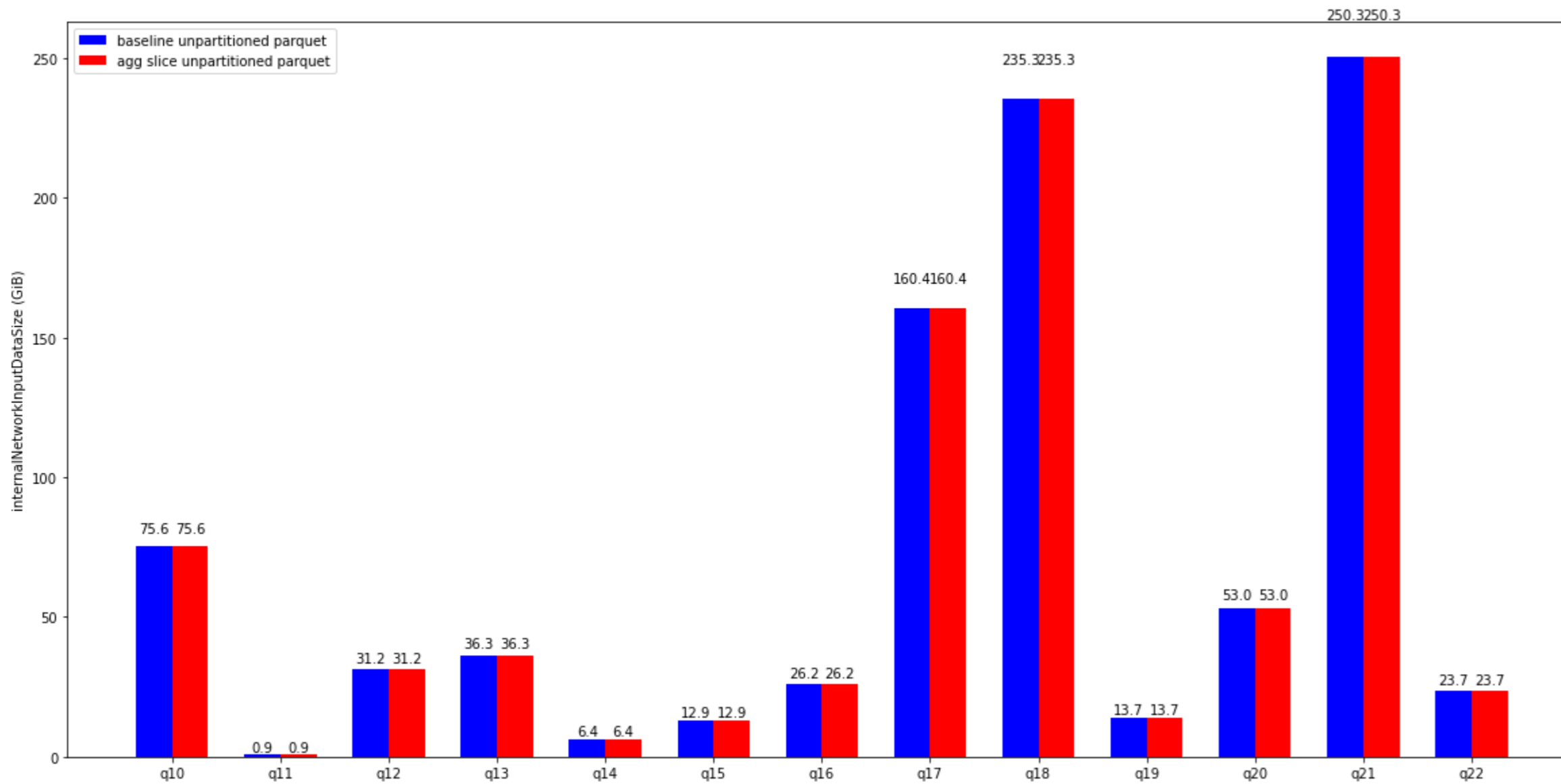
TPC-DS Comparison (Peak memory)

TPC-H Comparison (physicalInputDataSize)

TPC-DS Comparison (physicalInputDataSize)

TPC-H Comparison (internalNetworkInputDataSize GB)





query	baseline unpartitioned parquet mean	baseline unpartitioned parquet std.dev	agg slice unpartitioned parquet mean	agg slice unpartitioned parquet std.dev
0 presto/tpch: q01	2.516 MiB	77.972 KiB	2.538 MiB	15.721 KiB
1 presto/tpch: q02	3.810 GiB	3.736 KiB	3.810 GiB	5.734 KiB
2 presto/tpch: q03	124.931 GiB	155.280 KiB	124.931 GiB	139.313 KiB
3 presto/tpch: q04	22.586 GiB	1.796 MiB	22.587 GiB	2.322 MiB
4 presto/tpch: q05	71.705 GiB	29.980 KiB	71.705 GiB	32.367 KiB
5 presto/tpch: q06	225.021 KiB	341.295 YiB	225.209 KiB	86.423 YiB
6 presto/tpch: q07	44.259 GiB	23.752 KiB	44.259 GiB	26.026 KiB
7 presto/tpch: q08	15.180 GiB	179.568 KiB	15.180 GiB	32.860 KiB
8 presto/tpch: q09	415.317 GiB	896.965 KiB	415.317 GiB	0.960 MiB
9 presto/tpch: q10	75.554 GiB	20.556 KiB	75.554 GiB	12.657 KiB
10 presto/tpch: q11	0.945 GiB	2.599 MiB	0.944 GiB	1.433 MiB
11 presto/tpch: q12	31.164 GiB	17.073 MiB	31.178 GiB	13.164 MiB
12 presto/tpch: q13	36.257 GiB	4.450 KiB	36.257 GiB	2.741 KiB
13 presto/tpch: q14	6.378 GiB	1.419 MiB	6.377 GiB	1.161 MiB
14 presto/tpch: q15	12.935 GiB	701.089 KiB	12.934 GiB	254.839 KiB
15 presto/tpch: q16	26.174 GiB	2.648 KiB	26.174 GiB	4.431 KiB
16 presto/tpch: q17	160.446 GiB	141.031 KiB	160.446 GiB	168.429 KiB
17 presto/tpch: q18	235.342 GiB	2.310 MiB	235.342 GiB	2.158 MiB

	query	baseline unpartitioned parquet mean	baseline unpartitioned parquet std.dev	agg slice unpartitioned parquet mean	agg slice unpartitioned parquet std.dev
18	presto/tpch: q19	13.697 GiB	39.360 KiB	13.697 GiB	20.616 KiB
19	presto/tpch: q20	52.976 GiB	68.929 KiB	52.976 GiB	89.058 KiB
20	presto/tpch: q21	250.309 GiB	1.444 MiB	250.309 GiB	1.128 MiB
21	presto/tpch: q22	23.673 GiB	98.178 KiB	23.673 GiB	106.014 KiB

TPC-DS Comparison (internalNetworkInputDataSize GB)