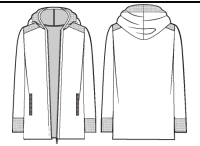


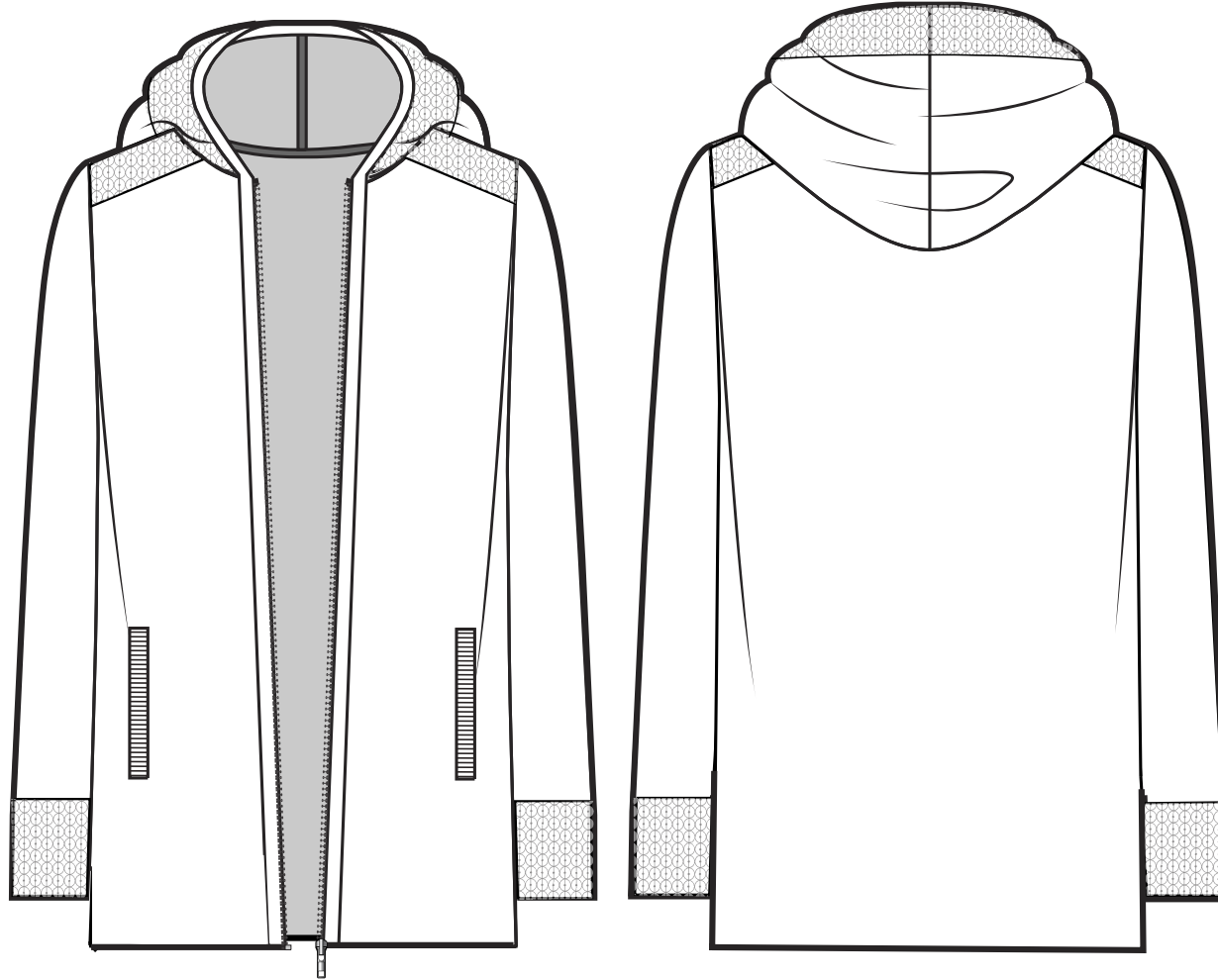
chico's

066-22C104978 - : CC SEQUIN TRIM ZIP CARDI



Product Status: Active

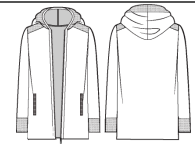
Vendor (Supplier):	Cobalt_FOB	Size Category:	Alpha
Category:	066 - Active Sweaters	Season\Floor Set:	Chicos Frontline 2022 Holiday, Holiday
Primary Material:	Semi-Worsted - 2/48NM_ 52% Cotton, 26% Rayon, 17% Nylon, 3% Spandex, 2% Cashmere: YAR-4522 - Cobalt_FOB		



Design:	Nicole Spiller	Tech Design:	Suzanna Kawai-Pincus	Sourcing:	Kirby Osborne Berens
Creative Tech Design		Product Development:	Kristina DeLong		

chico's

066-22C104978 - : CC SEQUIN TRIM ZIP CARDI



Primary Material: Semi-Worsted - 2/48NM_52% Cotton, 26% Rayon, 17% Nylon, 3% Spandex, 2% Cashmere: YAR-4522 - Cobalt_FOB
Vendor (Supplier): Cobalt_FOB
Season/Floor Set: Chicos Frontline 2022 Holiday, Holiday

001 : BOM 1

BOM: Colorway - Material Color




Section: Main Materials

Part Name	Size1	Sourc e	Material	Supplier	Chang e	Place ment	Chico s Frontli ne Materi al Name	Chico s Outlet Materi al Name	Soma Materi al Name	WHB M Materi al Name	Materi al Suppli er Refer ence Num ber	Materi al Cuttab le Width	Materi al Weigh t	Materi al Comm ents	UOM	Price (Solid)	Price OVR	Quanti ty	Color	Color Appro val	Comm ents	Vendo r Comm ents	Materi al Status	Appro val	Appro val Comm ents
YARN	000,00,01,2,3,4	001 : Cobalt_FOB	Semi - Worsted - 2/48 NM_52% Cotton, 26% Rayon, 17% Nylon, 3% Spandex, 2% Cashmere: YAR-4522	Cobalt_FOB		BO DY									pou nd	\$0.00	\$0.00	0.00			12 GGFNR		De vel op me nt		
	000,00,01,2,3,4	001 : Cobalt_FOB	Semi - Worsted - 2/48 NM_65% Cotton, 32% Rayon, 3% Cashmere: YAR-4587	Mich el Of Hong Kong , Ltd.			19 DD B0 289 8				YO 897 6		0.00		pou nd	\$5.75	\$0.00	0.00					De vel op me nt		
	000,00,01,2,3,4	001 : Cobalt_FOB	Core Spun - 2070_82% Nylon, 18% Spandex: YAR-3755	Mich el Of Hong Kong , Ltd.							YO 083 6				pou nd	\$5.10	\$0.00	0.00					Co nce pt		

001 : BOM 1

BOM: Colorway - Material Color

Section: Main Materials

Part Name	Size1	Source	Material	Supplier	Change	Placement	Chicos Frontline Material Name	Chicos Outlet Material Name	Soma Material Name	WHB M Material Name	Material Supplier Reference Number	Material Cuttable Width	Material Weight	Material Comments	UOM	Price (Solid)	Price OVR	Quantity	Color	Color Approval	Comments	Vendor Comments	Material Status	Approval	Approval Comments
 RIB FINISH	000, 00, 0, 1, 2, 3, 4	001 : Cobalt FOB	Semi - Wors ted - 2/48 NM 52% Cotton, 26% Rayon, 17% Nylon, 3% Spandex, 2% Cashmere: YAR-4522	Cobalt_FOB		WE LT PO CK ET S									pou nd	\$0. 00	\$0. 00	0.0 0			AS SA MP LE		De vel op me nt		
	000, 00, 0, 1, 2, 3, 4	001 : Cobalt FOB	Semi - Wors ted - 2/48 NM 65% Cotton, 32% Rayon, 3% Cashmere: YAR-4587	Mich el Of Hong Kong , Ltd.			19 DD BO 289 8				YO 897 6		0.0 0		pou nd	\$5. 75	\$0. 00	0.0 0					De vel op me nt		
	000, 00, 0, 1, 2, 3, 4	001 : Cobalt FOB	Core Spun - 2070 82% Nylon, 18% Spandex: YAR-3755	Mich el Of Hong Kong , Ltd.							YO 083 6				pou nd	\$5. 10	\$0. 00	0.0 0					Co nce pt		

001 : BOM 1			BOM: Colorway - Material Color													Section: Trims									
Part Name	Size1	Source	Material	Supplier	Change	Placement	Chicos Frontline Material Name	Chicos Outlet Material Name	Soma Material Name	WHB M Material Name	Material Supplier Reference Number	Material Cuttable Width	Material Weight	Material Comments	UOM	Price (Solid)	Price OVR	Quantity	Color	Color Approval	Comments	Vendor Comments	Material Status	Approval	Approval Comments
SEQUIN TRIM	000, 00, 0, 1, 2, 3, 4	001 : Cobalt FOB	SEQUINS AS CUTTING SENT TO VENDOR TO REFERENCE			HOOD OPENING TO P OF SHOULDERS AND CUFFS										\$0.00	\$0.00	0.00							
METAL ZIPPER TEETH/ZIPPER PULL	000, 00, 0, 1, 2, 3, 4	001 : Cobalt FOB	IDEAL OR YKK #3 ZIPPER - SEE DESIGN CARD FOR IMAGE			CF										\$0.00	\$0.00	1.00							

001 : BOM 1				BOM: Colorway - Material Color												Section: Labeling-Packaging											
Part Name	Size1	Source	Material	Supplier	Change	Placement	Chicos Frontline Material Name	Chicos Outlet Material Name	Soma Material Name	WHB M Material Name	Material Supplier Reference Number	Material Cutable Width	Material Weight	Material Comments	UOM	Price (Solid)	Price OVR	Quantity	Color	Color Approval	Comments	Vendor Comments	Material Status	Approval	Approval Comments		
main	000,00,0,1,2,3,4	001 : Cobalt_FOB	CHF-0031 52-WL : Chicos Frontline Zenergy Logo Woven Endfold Label	Nexgen		E3							0.00		millimeter	\$0.00	\$0.00	0.00							Development Approved		
size/coo	000,00,0,1,2,3,4	001 : Cobalt_FOB	CHF-0031 55-WL : Chicos Frontline Alpha Size/COO Woven Loop Label	Nexgen		E3									millimeter	\$0.00	\$0.00	0.00							Development Approved		
care	000,00,0,1,2,3,4	001 : Cobalt_FOB	FAS-0030 20-PL : FAS Apparel Ecu Multilingual Printed Label	Nexgen		placement 2, option 1									millimeter	\$0.00	\$0.00	0.00							Development Approved		

chico's**066-22C104978 - : CC SEQUIN TRIM ZIP CARDI****Primary Material:**

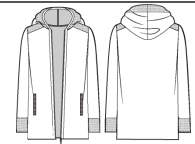
Semi-Worsted - 2/48NM_52% Cotton, 26% Rayon, 17% Nylon, 3% Spandex, 2% Cashmere: YAR-4522 - Cobalt_FOB

Vendor (Supplier):

Cobalt_FOB

Season/Floor Set:

Chicos Frontline 2022 Holiday, Holiday

**MINIMUM CONSTRUCTION STANDARDS SWEATERS**

Vendor is responsible for meeting minimum construction standards found on our Vendor Extranet or disclaimer

CONSTRUCTION DETAILS / TRIMS**Hood:**

Self hood, linked.

Tubular at opening edge. Top applied sequin band.

Tubular join at CB hood and neck join seam.

Zipper/Placket Trim:

Zipper with kissing tubular placket.

FNR strapping facing inside over zipper tape.

Set-in Armhole

Full Fashioned 2 needles from link seam

3/4" Minimum Cast Off at Under Arm.

Cuff Trim:

Tubular start with top applied sequins

Bottom Trim:

Self start

Pockets:

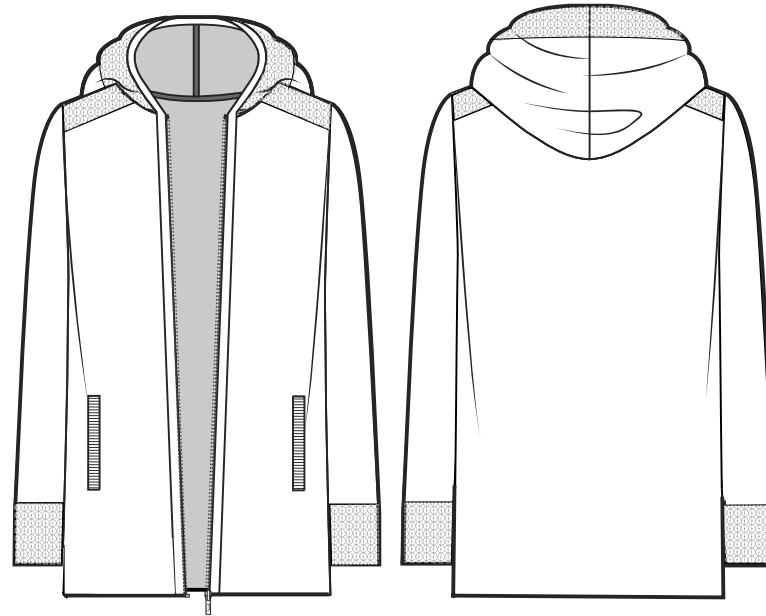
Vertical welt pockets. 1x1 rib at opening.

Jersey pocket bags attached to front with crochet thread chain

Shoulder "Yoke" Detail:

Top applied sequins, measurements as spec.

**Long Sleeve, Zip Front Cardigan
with Hood and Pockets
Sequin Trim
Stitch: Full Needle Rib**

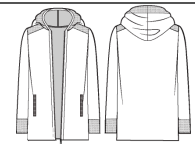
**GARMENT INSTRUCTIONS:**

--

chico's

066-22C104978 - : CC SEQUIN TRIM ZIP CARDI

Primary Material: Semi-Worsted - 2/48NM_52% Cotton, 26% Rayon, 17% Nylon, 3% Spandex, 2% Cashmere: YAR-4522 - Cobalt_FOB
Vendor (Supplier): Cobalt_FOB
Season\Floor Set: Chicos Frontline 2022 Holiday, Holiday

**General Attributes:**

Description	CC SEQUIN TRIM ZIP CARDI	Brand	Chicos
Development Style Number	066-22C104978	Channel	Frontline
Division	Apparel 31	Department	Active Wear 33119
Class	Active Wear Top 3311910	Category	066 - Active Sweaters
Size Category	Alpha	Style Reference	
Article Description		Sloper/Block	
Garment Washed		Non Apparel Vendor Development Number	
VMAccess	No		

General Attributes (Product/Season):

Product Status	Active	Vignette	Zenergy
Product Stage	Pre Production	Assortment Pyramid	Fashion
Sourcing Channel		Price Band	Better
Fit Definition		Initial Floor Set	Holiday
Priority		Floor Set	Holiday
Collection	1. HOLIDAY	Group	1. COTTON CASHMERE
Product Components		3D	
		Coordinating Product 1	
		Coordinating Product 2	

Team (Product/Season):

Design	Nicole Spiller	Tech Design	Suzanna Kawai-Pincus
Product Development	Kristina DeLong	Sourcing	Kirby Osborne Berens

Sweater Attributes:

Gauge	0.0	Number of Ends	
Stitch		Yarn Size	

Footwear Attributes:

Heel Height
Toe Type

Placeholder Attributes (Product/Season):**Placeholder ID****Care & Content:**

Product Content	Product Care
Content Comments	Product Special Instructions

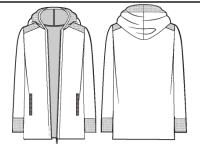
Innovation:**Innovation Product**

FrontLine Heat transfer (Denim) / Joker Tags for Bottoms Attributes:	
Variable Solutions	Variable Leg Shape
Variable Name	Variable Lengths
Outlet Heat transfer / Joker Tags for Bottoms Attributes:	
Variable Information Solutions / Technology	Rise
Program	Fit
Leg Shape / Silhouette	Lengths / InSeam
InSeams - Heat transfer / Joker Tags for Bottoms Attributes:	
Variable Inseams	

chico's

066-22C104978 - : CC SEQUIN TRIM ZIP CARDI

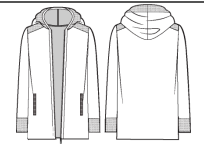
Primary Material: Semi-Worsted - 2/48NM_52% Cotton, 26% Rayon, 17% Nylon, 3% Spandex, 2% Cashmere: YAR-4522 - Cobalt_FOB
Vendor (Supplier): Cobalt_FOB
Season\Floor Set: Chicos Frontline 2022 Holiday, Holiday



chico's

066-22C104978 - : CC SEQUIN TRIM ZIP CARDI

Primary Material: Semi-Worsted - 2/48NM_52% Cotton, 26% Rayon, 17% Nylon, 3% Spandex, 2% Cashmere: YAR-4522 - Cobalt_FOB
Vendor (Supplier): Cobalt_FOB
Season/Floor Set: Chicos Frontline 2022 Holiday, Holiday



Sloper/Block:	Style Reference:
----------------------	-------------------------

Measurement Set: 001 : ms_000-4 Sample Size: 1 UOM: Fractional in

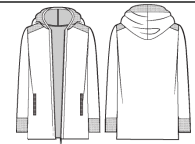
POM #	Name	Tol (+)	Tol (-)	000	00	0	1	2	3	4
ZI01.1	ON BODY - Length from HPS - Front	0	0				27			
	** For Internal Use Only									
N09.1	Front Length from HPS at Neck Seam - 26" +	1/2	1/2	24	24 1/2	25	25 1/2	26	26 1/2	27
A10.1	Shoulder Seam Forward at Neckline	1/8	1/8	2	2	2	2	2	2	2
A09.1	Shoulder Seam Forward at Armhole	1/8	1/8	2 1/2	2 1/2	2 1/2	2 1/2	2 1/2	2 1/2	2 1/2
A02.1	Shoulder Slope: Ref Size 1	1/8	1/8				1 1/4			
B03.1	Neck Width at HPS Seam to Seam	1/4	1/4	6 1/4	6 1/2	6 3/4	7	7 1/4	7 1/2	7 3/4
B07.1	Front Neck Drop from HPS/Seam to Seam - High	1/8	1/8	3 1/8	3 1/4	3 3/8	3 1/2	3 5/8	3 3/4	3 7/8
B16.1	Back Neck Drop from HPS/Seam to Seam - High	1/8	1/8	1/4	3/8	1/2	5/8	3/4	7/8	1
E29.1	Across Front Placement From HPS - High	1/8	1/8	4 1/4	4 1/2	4 3/4	5	5 1/4	5 1/2	5 3/4
E32.1	Across Front X" below HPS - High - Seam to Seam - Including Armhole FNR	1/4	1/4	11	11 1/2	12	12 3/4	13 5/8	14 1/2	15 3/8
G01.1	Bust Width 1" Below Armhole -1/2	1/4	1/4	15 1/2	16 1/2	17 1/2	19	20 3/4	22 1/2	24 1/4
N29.1	Waist Placement From HPS	1/4	1/4	12 1/2	13	13 1/2	14	14 1/2	15	15 1/2
L10.1	Waist Width X" From HPS -1/2 (Tops/Dresses)	1/4	1/4	15 1/2	16 1/2	17 1/2	19	20 3/4	22 3/4	24 7/8
P05.1	High Hip Placement From HPS (tops/dresses)	0	0	17 1/2	18	18 1/2	19	19 1/2	20	20 1/2
P06.1	High Hip Width X" Below HPS Straight -1/2 (tops/dresses)	1/4	1/4	16 1/2	17 1/2	18 1/2	20	21 3/4	23 5/8	25 5/8
M04.1	Sweep Width Straight -1/2 (Tops): at Bottom Edge	1/4	1/4	17	18	19	20 1/2	22 1/4	24	25 3/4
D01.1	Across Shoulder - Seam to Seam - Including Armhole FNR	1/4	1/4	12 1/2	13	13 1/2	14 1/4	15 1/8	16	16 7/8
E30.1	Across Back Placement From HPS - High	1/8	1/8	5 1/4	5 1/2	5 3/4	6	6 1/4	6 1/2	6 3/4
E44.1	Across Back X" Below HPS - High- Seam to Seam - Including Armhole FNR	1/4	1/4	12	12 1/2	13	13 3/4	14 5/8	15 1/2	16 3/8
H03.1	Armhole Straight - Seam to Seam - not including FNR	1/4	1/4	7 1/2	7 3/4	8	8 1/2	9	9 1/2	10
K01.1	Sleeve Length-Shoulder Point	1/4	1/4	22	22 1/8	22 1/4	22 1/2	22 13/16	23 1/8	23 7/16
K39.1	Sleeve Cap Height (Sweaters Only)	1/8	1/8	5 3/4	5 7/8	6	6 1/4	6 5/8	7	7 3/8
K41.1	Sleeve Cap Width - 1/2 (Sweaters Only)	1/4	1/4	3 3/4	3 7/8	4	4 1/4	4 5/8	5	5 3/8
I01.1	Muscle Width 1" Below Armhole -1/2	1/4	1/4	4 3/4	5 1/8	5 1/2	6	6 5/8	7 1/4	7 7/8

Measurement Set: 001 : ms_000-4 Sample Size: 1 UOM: Fractional in										
POM #	Name	Tol (+)	Tol (-)	000	00	0	1	2	3	4
J06.1	Elbow Placement Below Armhole	0	0				8			
J08.1	Elbow Width X" Below Armhole -1/2 - Sweaters	1/4	1/4	4 1/8	4 3/8	4 5/8	5	5 1/2	6	6 1/2
J05.1	Forearm Width at top of sequins -1/2						4 3/4			
K19.1	Sleeve Opening Width-1/2 - Long	3/16	3/16	3 3/4	4	4 1/4	4 1/2	4 3/4	5	5 1/4
	-----DETAILS-----									
C19.1	Front Hood Opening Trim Width: Tubular	1/8	1/8	3/8	3/8	3/8	3/8	3/8	3/8	3/8
	Sequin Band at Hood Opening	0	0	3 3/8	3 3/8	3 3/8	3 3/8	3 3/8	3 3/8	3 3/8
C14.1	Hood Length at CF	1/4	1/4	14 1/4	14 1/2	14 3/4	15	15 1/4	15 1/2	15 3/4
C15.1	Hood Width 5" below Top Edge	1/4	1/4	8 3/8	8 3/4	9 1/8	9 1/2	9 7/8	10 1/4	10 5/8
	Shoulder Sequin Panel Total Width at Neckline	0	0	2 1/4	2 1/4	2 1/4	2 1/4	2 1/4	2 1/4	2 1/4
	Shoulder Sequin Panel Total Width at Armhole	0	0	3 1/2	3 1/2	3 1/2	3 1/2	3 1/2	3 1/2	3 1/2
N37.1	Front Placket Width-tubular on each side of zipper	0	0	1/4	1/4	1/4	1/4	1/4	1/4	1/4
	FNR Zipper Facing Width	0	0	5/8	5/8	5/8	5/8	5/8	5/8	5/8
K33.1	Cuff Height - Top Applied Sequins	1/8	1/8	3 1/4	3 1/4	3 1/4	3 1/4	3 1/4	3 1/4	3 1/4
ZA24.1	Hem Height - self start	1/8	1/8	0	0	0	0	0	0	0
	-----POCKETS-----									
Y04.1	Welt Pocket Width	1/8	1/8	3/4	3/4	3/4	3/4	3/4	3/4	3/4
Y03.1	Welt Pocket Opening Length	1/4	1/4	5	5	5	5 1/4	5 1/2	5 3/4	5 3/4
Y18.1	Pocket Placement from Bottom Edge (Tops)	1/8	1/8	5	5	5	5	5	5	5
Y22.1	Pocket Placement from Center - Front - Tops (Sweaters Only)	1/4	1/4	5 5/8	5 7/8	6 1/8	6 1/2	7	7 1/2	8
Y15.1	Pocket Bag Width	1/4	1/4	5 3/4	5 3/4	5 3/4	6	6	6 1/4	6 1/4
Y16.1	Pocket Bag Length	1/4	1/4	6	6	6	6	6	6	6

chico's

066-22C104978 - : CC SEQUIN TRIM ZIP CARDI

Primary Material: Semi-Worsted - 2/48NM_52% Cotton, 26% Rayon, 17% Nylon, 3% Spandex, 2% Cashmere: YAR-4522 - Cobalt_FOB
Vendor (Supplier): Cobalt_FOB
Season/Floor Set: Chicos Frontline 2022 Holiday, Holiday



Request Name: 000-4	Sample Type: FIT	Sample Name: Fit-1
General Attributes - Request:		
Season Created For	Chicos Frontline 2022 Holiday	Request Status
Original Request Date	01/09/2022	Requested
Request Comments		Request Complete/Drop Date
		Floor Set
General Attributes:		
Date Sample Requested	04/08/2022	
Sample Types	Fit	Fit Status
Sample Name	Fit-1	Approved With Corrections
		Colorway
Date Comments Sent	05/11/2022	
Receipt/Approval Information:		
Sample Due Date	04/22/2022	Sample Status
Sample Received Date		Approved with Corrections
		Measured By
		Fit Model
		Hellen
		Garment Visual
		Garment Color
Fit Session Date	05/10/2022	
Fit Session Attendees	Ellen, Madelina, Liz, Nicole, Kristina, Jourdan, Kirby, Mallory	
Label/Ticket Information		
Label/Ticket Placement		
SAMPLE COMMENTS: Date: May 11, 2022 Submitted by: Suzanna Sample Color: black Weight in LBS/DOZ: 14 ¼		
Sample Status: •Fit #1 Sample Approved with corrections, Submit a PP		
Design or Styling: 1. Sequin placement looks good on sample		
Fit Revisions: 1.Reduce body length as revised spec. 2.Reduce neck width as revised spec. 3.Increase hood height as revised spec. 4.Reduce shoulder as revised spec. 5.Armhole is very high, lower as revised spec. 6.Increase sleeve cap height. 7.Elbow through opening is slightly snug, increase as specs. 8.Lower pocket as revised spec.		
Workmanship/Construction: 1.Tension/hand feel acceptable. 2.Proceed with sleeve option with tubular start, it looked and felt the best. 3.Construction page is updated.		

Per Vendor Notes:

1. n/a.

Labels/Trims:

- 1.Main Label placement approved.
- 2.Size/COO label placement approved.
- 3.Care label placement approved

Thank You,
Suzanna

Agent & Vendor Information:

ETA- Estimated Time of Arrival	05/05/2022	Sample Colorway	available
Fabric/Yarn	Correct Quality	Color Status	Correct Quality
Trims	Correct Quality	# of Samples Sent	1
Sample Factory	800202 Wing Ka Shing Knitwear Co., Ltd.	Sample Factory - Other	
Date Sample Shipped	05/03/2022	Shipping Method	DHL
Sample Shipped To	Suzanna	Shipping Reference Number	8594327475
		Shipping Tracking URL	https://www.dhl.com/en/express/tracking.html?AWB=8594327475
Delayed Product Sample Reason Codes (Pick One, Primary Reason)		Vendor Measurer	Cario Liu
Supplier Comments			

Factory:

Factory for Search [800202 Wing Ka Shing Knitwear Co., Ltd.](#)



066-22C104978 - : CC SEQUIN TRIM ZIP CARDI

Primary Material: Semi-Worsted - 2/48NM 52% Cotton, 26% Rayon, 17% Nylon, 3% Spandex, 2% Cashmere: YAR-4522 - Cobalt_FOB
 Vendor (Supplier): Cobalt_FOB
 Season/Floor Set: Chicos Frontline 2022 Holiday, Holiday



001 : ms_000-4: Fit-1 UOM: FRACTION FORMAT		(Approved With Corrections)								Size: 1
POM #	Name	Criticality	Tol (+)	Tol (-)	Requested Measurement	Vendor Measurement	Vendor Measurement Delta	Actual Measurement	Actual Measurement Delta	New Measurement
ZI01.1	ON BODY - Length from HPS - Front		0	0	27	0	0	26 3/4	- 1/4	27
	** For Internal Use Only					0		0		
						0		0		
N09.1	Front Length from HPS at Neck Seam - 26" +	Critical	1/2	1/2	26 1/2	26 1/8	- 3/8	0	0	25 1/2
A10.1	Shoulder Seam Forward at Neckline		1/8	1/8	1 3/8	2	5/8	0	0	2
A09.1	Shoulder Seam Forward at Armhole		1/8	1/8	2	2 1/2	1/2	0	0	2 1/2
A02.1	Shoulder Slope: Ref Size 1		1/8	1/8	1 1/4	1 1/2	1/4	0	0	1 1/4
						0		0		
B03.1	Neck Width at HPS Seam to Seam	Critical	1/4	1/4	6 3/4	7 1/4	1/2	0	0	7
B07.1	Front Neck Drop from HPS/Seam to Seam - High	Critical	1/8	1/8	3 1/2	3 1/4	- 1/4	0	0	3 1/2
B16.1	Back Neck Drop from HPS/Seam to Seam - High	Critical	1/8	1/8	5/8	1/2	- 1/8	0	0	5/8
						0		0		
E29.1	Across Front Placement From HPS - High		1/8	1/8	5	5	0	0	0	5
E32.1	Across Front X" below HPS - High - Seam to Seam - Including Armhole FNR	Critical	1/4	1/4	12 1/2	12 5/8	1/8	0	0	12 3/4
						0		0		
G01.1	Bust Width 1" Below Armhole -1/2	Critical	1/4	1/4	19	19 1/8	1/8	0	0	19
N29.1	Waist Placement From HPS		1/4	1/4	14	14	0	0	0	14
L10.1	Waist Width X" From HPS -1/2 (Tops/Dresses)	Critical	1/4	1/4	19	19	0	0	0	19
P05.1	High Hip Placement From HPS (tops/dresses)		0	0	19	19	0	0	0	19
P06.1	High Hip Width X" Below HPS Straight -1/2 (tops/dresses)	Critical	1/4	1/4	20	20	0	0	0	20
M04.1	Sweep Width Straight -1/2 (Tops): at Bottom Edge	Critical	1/4	1/4	20 1/2	20 1/4	- 1/4	0	0	20 1/2
						0		0		
D01.1	Across Shoulder - Seam to Seam - Including Armhole FNR	Critical	1/4	1/4	14	14 1/2	1/2	0	0	14 1/4
E30.1	Across Back Placement From HPS - High		1/8	1/8	6	6	0	0	0	6
E44.1	Across Back X" Below HPS - High- Seam to Seam - Including Armhole FNR	Critical	1/4	1/4	13 1/2	13 3/4	1/4	0	0	13 3/4
H03.1	Armhole Straight - Seam to Seam - not including FNR	Critical	1/4	1/4	8 1/4	7 3/4	- 1/2	0	0	8 1/2
K01.1	Sleeve Length-Shoulder Point	Critical	1/4	1/4	22 1/2	22 1/4	- 1/4	0	0	22 1/2
K39.1	Sleeve Cap Height (Sweaters Only)		1/8	1/8	6	5 7/8	- 1/8	0	0	6 1/4
K41.1	Sleeve Cap Width - 1/2 (Sweaters Only)		1/4	1/4	4 1/4	4	- 1/4	0	0	4 1/4
I01.1	Muscle Width 1" Below Armhole -1/2	Critical	1/4	1/4	6	5 7/8	- 1/8	0	0	6
J06.1	Elbow Placement Below Armhole		0	0	8	8	0	0	0	8
J08.1	Elbow Width X" Below Armhole -1/2 - Sweaters		1/4	1/4	5	4 3/4	- 1/4	0	0	5
J05.1	Forearm Width at top of sequins -1/2				4 3/4	4 1/2	- 1/4	0	0	4 3/4
K19.1	Sleeve Opening Width-1/2 - Long	Critical	3/16	3/16	4 1/4	4 3/8	1/8	0	0	4 1/2
						0		0		
	-----DETAILS-----					0		0		

001 : ms_000-4: Fit-1 UOM: FRACTION_FORMAT

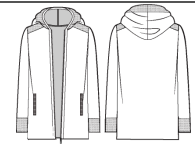
(Approved With Corrections)

Size: 1

POM #	Name	Criticality	Tol (+)	Tol (-)	Requested Measurement	Vendor Measurement	Vendor Measurement Delta	Actual Measurement	Actual Measurement Delta	New Measurement
C19.1	Front Hood Opening Trim Width: Tubular		1/8	1/8	3/8	3/8	0	0	0	3/8
	Sequin Band at Hood Opening		0	0	3 1/4	3 3/8	1/8	0	0	3 3/8
C14.1	Hood Length at CF		1/4	1/4	15 1/2	14 3/4	- 3/4	0	0	15
C15.1	Hood Width 5" below Top Edge		1/4	1/4	9 1/2	9 7/8	3/8	0	0	9 1/2
	Shoulder Sequin Panel Total Width at Neckline		0	0	2 1/4	2 1/4	0	0	0	2 1/4
	Shoulder Sequin Panel Total Width at Armhole		0	0	3 1/2	3 3/8	- 1/8	0	0	3 1/2
N37.1	Front Placket Width-tubular on each side of zipper		0	0	1/4	3/8	1/8	0	0	1/4
	FNR Zipper Facing Width		0	0	5/8	3/4	1/8	0	0	5/8
K33.1	Cuff Height - Top Applied Sequins		1/8	1/8	3 1/4	3	- 1/4	0	0	3 1/4
ZA24.1	Hem Height - self start		1/8	1/8	0	0	0	0	0	0
	-----POCKETS-----					0		0		
Y04.1	Welt Pocket Width		1/8	1/8	3/4	7/8	1/8	0	0	3/4
Y03.1	Welt Pocket Opening Length		1/4	1/4	5 1/4	5	- 1/4	0	0	5 1/4
Y18.1	Pocket Placement from Bottom Edge (Tops)		1/8	1/8	4 1/2	5 1/4	3/4	0	0	5
Y22.1	Pocket Placement from Center - Front - Tops (Sweaters Only)		1/4	1/4	6 1/2	6 1/4	- 1/4	0	0	6 1/2
Y15.1	Pocket Bag Width		1/4	1/4	6	6	0	0	0	6
Y16.1	Pocket Bag Length		1/4	1/4	6	6 1/8	1/8	0	0	6

chico's

066-22C104978 - : CC SEQUIN TRIM ZIP CARDI



Primary Material: Semi-Worsted - 2/48NM_52% Cotton, 26% Rayon, 17% Nylon, 3% Spandex, 2% Cashmere: YAR-4522 - Cobalt_FOB
Vendor (Supplier): Cobalt_FOB
Season\Floor Set: Chicos Frontline 2022 Holiday, Holiday

Request Name: 000-4	Sample Type: FIT	Sample Name: PP
General Attributes - Request:		
Season Created For	Chicos Frontline 2022 Holiday	Request Status Requested
Original Request Date	01/09/2022	Request Complete/Drop Date
Request Comments		Floor Set
General Attributes:		
Date Sample Requested	05/11/2022	
Sample Types	PP	Fit Status Requested
Sample Name	PP	
		Colorway
Date Comments Sent		
Receipt/Approval Information:		
Sample Due Date	05/25/2022	Sample Status Requested
Sample Received Date		Measured By
		Fit Model
		Garment Visual
		Garment Color
Fit Session Date		
Fit Session Attendees		
Label/Ticket Information		
Label/Ticket Placement		
SAMPLE COMMENTS:		
Agent & Vendor Information:		
ETA- Estimated Time of Arrival		Sample Colorway
Fabric/Yarn		Color Status
Trims		# of Samples Sent
Sample Factory		Sample Factory - Other
Date Sample Shipped		Shipping Method
Sample Shipped To		Shipping Reference Number
		Shipping Tracking URL
Delayed Product Sample Reason Codes (Pick One, Primary Reason)		Vendor Measurer
Supplier Comments		
Factory:		
Factory for Search		



066-22C104978 - : CC SEQUIN TRIM ZIP CARDI

Primary Material: Semi-Worsted - 2/48NM 52% Cotton, 26% Rayon, 17% Nylon, 3% Spandex, 2% Cashmere: YAR-4522 - Cobalt_FOB
 Vendor (Supplier): Cobalt_FOB
 Season/Floor Set: Chicos Frontline 2022 Holiday, Holiday



001 : ms_000-4: PP UOM: FRACTION FORMAT		(Requested)								Size: 1
POM #	Name	Criticality	Tol (+)	Tol (-)	Requested Measurement	Vendor Measurement	Vendor Measurement Delta	Actual Measurement	Actual Measurement Delta	New Measurement
ZI01.1	ON BODY - Length from HPS - Front		0	0	27	0	0	0	0	27
	** For Internal Use Only					0		0		
						0		0		
N09.1	Front Length from HPS at Neck Seam - 26" +	Critical	1/2	1/2	25 1/2	0	0	0	0	25 1/2
A10.1	Shoulder Seam Forward at Neckline		1/8	1/8	2	0	0	0	0	2
A09.1	Shoulder Seam Forward at Armhole		1/8	1/8	2 1/2	0	0	0	0	2 1/2
A02.1	Shoulder Slope: Ref Size 1		1/8	1/8	1 1/4	0	0	0	0	1 1/4
						0		0		
B03.1	Neck Width at HPS Seam to Seam	Critical	1/4	1/4	7	0	0	0	0	7
B07.1	Front Neck Drop from HPS/Seam to Seam - High	Critical	1/8	1/8	3 1/2	0	0	0	0	3 1/2
B16.1	Back Neck Drop from HPS/Seam to Seam - High	Critical	1/8	1/8	5/8	0	0	0	0	5/8
						0		0		
E29.1	Across Front Placement From HPS - High		1/8	1/8	5	0	0	0	0	5
E32.1	Across Front X" below HPS - High - Seam to Seam - Including Armhole FNR	Critical	1/4	1/4	12 3/4	0	0	0	0	12 3/4
						0		0		
G01.1	Bust Width 1" Below Armhole -1/2	Critical	1/4	1/4	19	0	0	0	0	19
N29.1	Waist Placement From HPS		1/4	1/4	14	0	0	0	0	14
L10.1	Waist Width X" From HPS -1/2 (Tops/Dresses)	Critical	1/4	1/4	19	0	0	0	0	19
P05.1	High Hip Placement From HPS (tops/dresses)		0	0	19	0	0	0	0	19
P06.1	High Hip Width X" Below HPS Straight -1/2 (tops/dresses)	Critical	1/4	1/4	20	0	0	0	0	20
M04.1	Sweep Width Straight -1/2 (Tops): at Bottom Edge	Critical	1/4	1/4	20 1/2	0	0	0	0	20 1/2
						0		0		
D01.1	Across Shoulder - Seam to Seam - Including Armhole FNR	Critical	1/4	1/4	14 1/4	0	0	0	0	14 1/4
E30.1	Across Back Placement From HPS - High		1/8	1/8	6	0	0	0	0	6
E44.1	Across Back X" Below HPS - High- Seam to Seam - Including Armhole FNR	Critical	1/4	1/4	13 3/4	0	0	0	0	13 3/4
H03.1	Armhole Straight - Seam to Seam - not including FNR	Critical	1/4	1/4	8 1/2	0	0	0	0	8 1/2
K01.1	Sleeve Length-Shoulder Point	Critical	1/4	1/4	22 1/2	0	0	0	0	22 1/2
K39.1	Sleeve Cap Height (Sweaters Only)		1/8	1/8	6 1/4	0	0	0	0	6 1/4
K41.1	Sleeve Cap Width - 1/2 (Sweaters Only)		1/4	1/4	4 1/4	0	0	0	0	4 1/4
I01.1	Muscle Width 1" Below Armhole -1/2	Critical	1/4	1/4	6	0	0	0	0	6
J06.1	Elbow Placement Below Armhole		0	0	8	0	0	0	0	8
J08.1	Elbow Width X" Below Armhole -1/2 - Sweaters		1/4	1/4	5	0	0	0	0	5
J05.1	Forearm Width at top of sequins -1/2				4 3/4	0	0	0	0	4 3/4
K19.1	Sleeve Opening Width-1/2 - Long	Critical	3/16	3/16	4 1/2	0	0	0	0	4 1/2
						0		0		
	-----DETAILS-----					0		0		

001 : ms_000-4: PP UOM: FRACTION FORMAT		(Requested)							Size: 1	
POM #	Name	Criticality	Tol (+)	Tol (-)	Requested Measurement	Vendor Measurement	Vendor Measurement Delta	Actual Measurement	Actual Measurement Delta	New Measurement
C19.1	Front Hood Opening Trim Width: Tubular		1/8	1/8	3/8	0	0	0	0	3/8
	Sequin Band at Hood Opening		0	0	3 3/8	0	0	0	0	3 3/8
C14.1	Hood Length at CF		1/4	1/4	15	0	0	0	0	15
C15.1	Hood Width 5" below Top Edge		1/4	1/4	9 1/2	0	0	0	0	9 1/2
	Shoulder Sequin Panel Total Width at Neckline		0	0	2 1/4	0	0	0	0	2 1/4
	Shoulder Sequin Panel Total Width at Armhole		0	0	3 1/2	0	0	0	0	3 1/2
N37.1	Front Placket Width-tubular on each side of zipper		0	0	1/4	0	0	0	0	1/4
	FNR Zipper Facing Width		0	0	5/8	0	0	0	0	5/8
K33.1	Cuff Height - Top Applied Sequins		1/8	1/8	3 1/4	0	0	0	0	3 1/4
ZA24.1	Hem Height - self start		1/8	1/8	0	0	0	0	0	0
	-----POCKETS-----					0		0		
Y04.1	Welt Pocket Width		1/8	1/8	3/4	0	0	0	0	3/4
Y03.1	Welt Pocket Opening Length		1/4	1/4	5 1/4	0	0	0	0	5 1/4
Y18.1	Pocket Placement from Bottom Edge (Tops)		1/8	1/8	5	0	0	0	0	5
Y22.1	Pocket Placement from Center - Front - Tops (Sweaters Only)		1/4	1/4	6 1/2	0	0	0	0	6 1/2
Y15.1	Pocket Bag Width		1/4	1/4	6	0	0	0	0	6
Y16.1	Pocket Bag Length		1/4	1/4	6	0	0	0	0	6