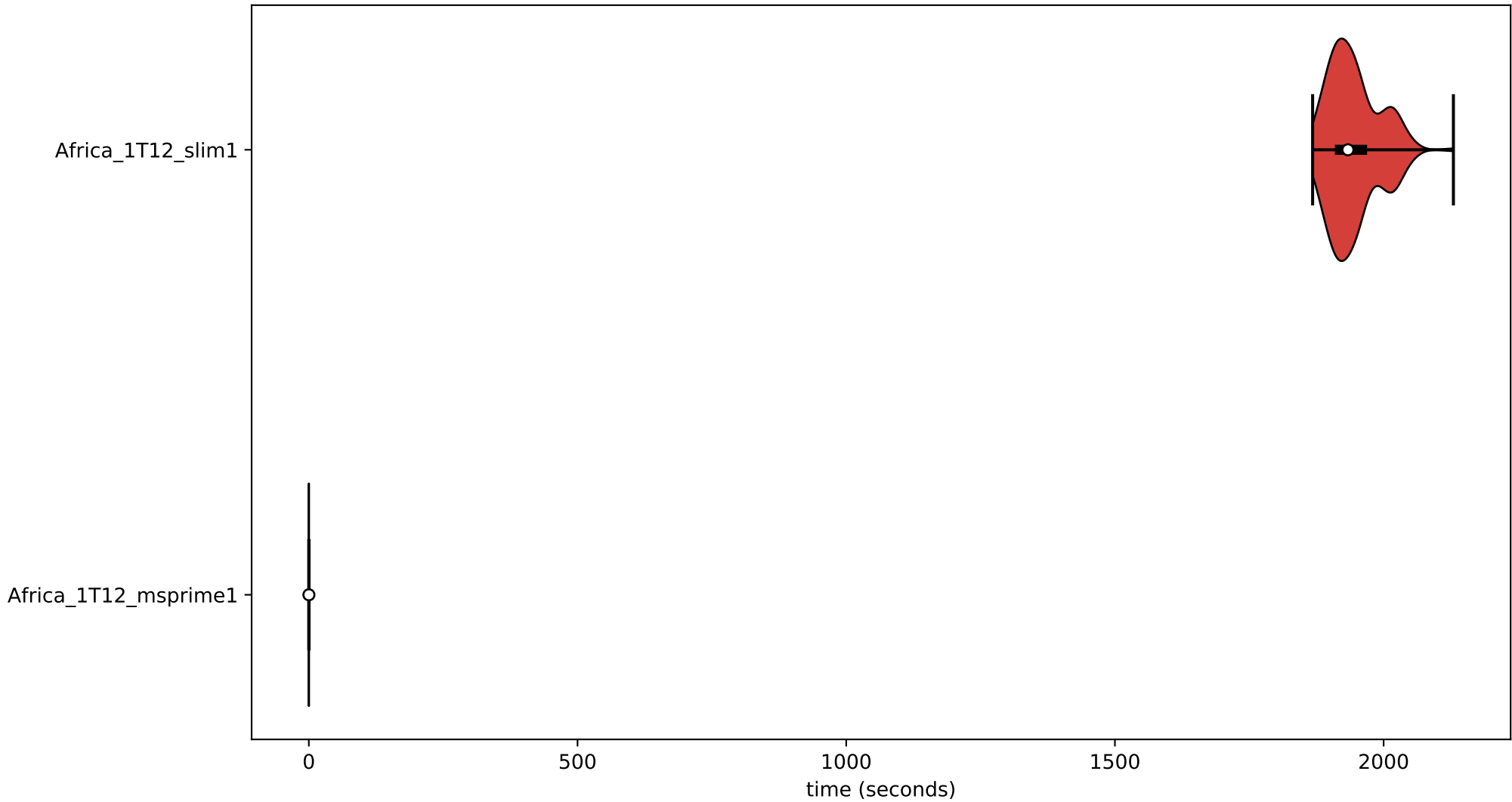
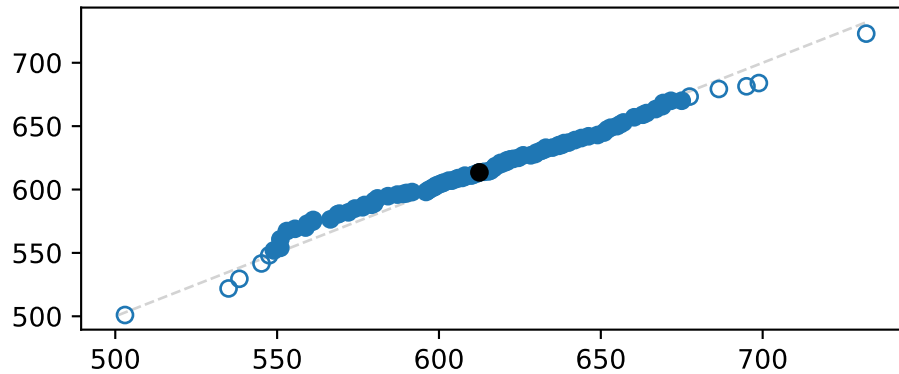


Run time.

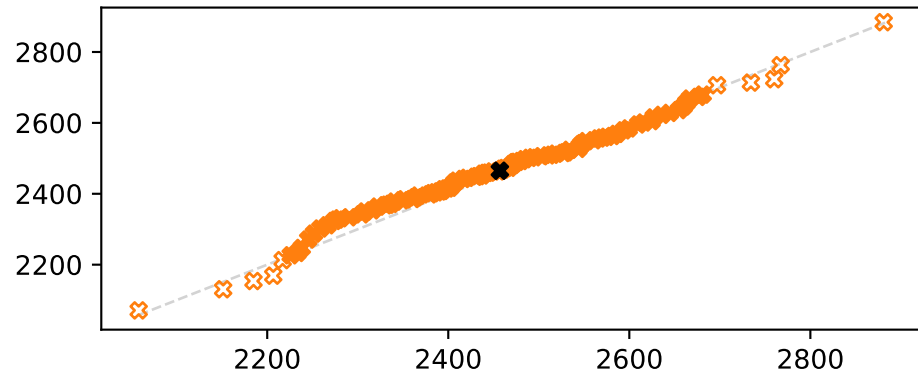


ts_properties:
TreeSequence properties.

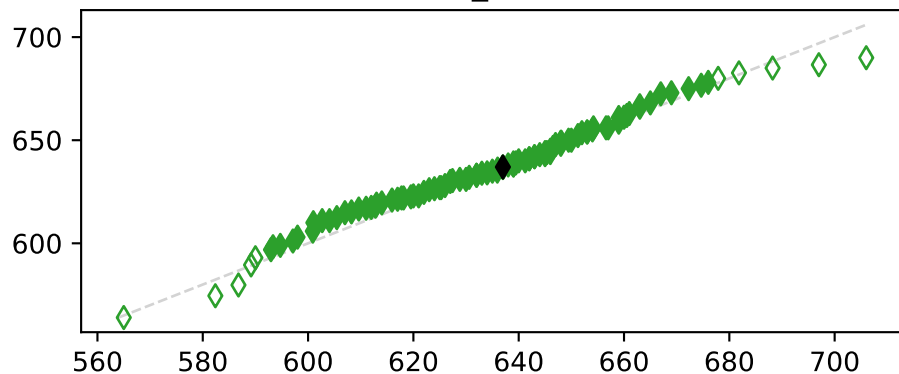
num_trees



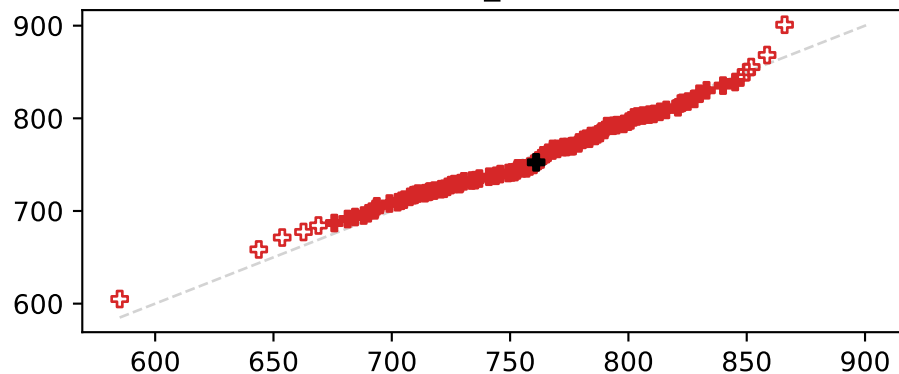
num_edges



num_nodes



num_sites



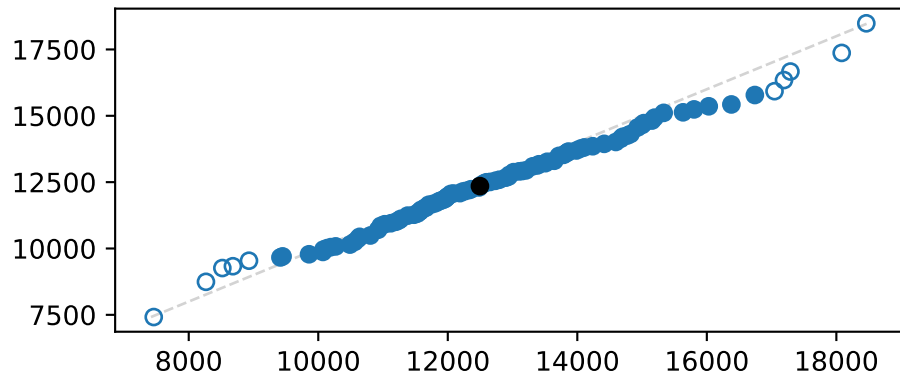
Africa_1T12_msprime1

Africa_1T12_slim1

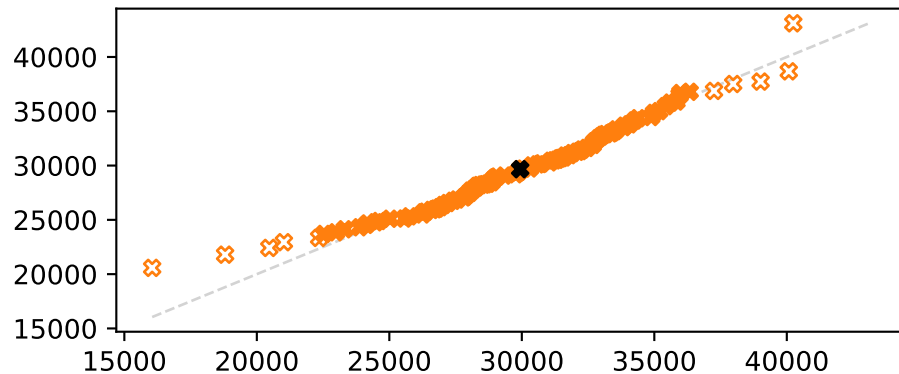
tmrca:

Time to most recent common ancestor of sample, aka tree height.

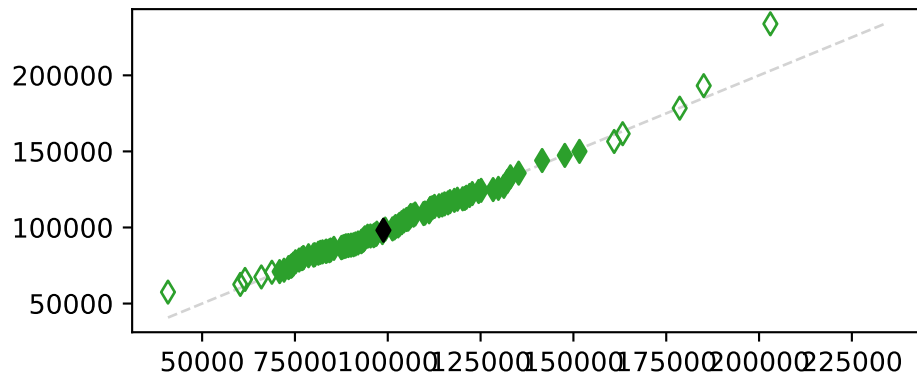
min(tmrca)



median(tmrca)

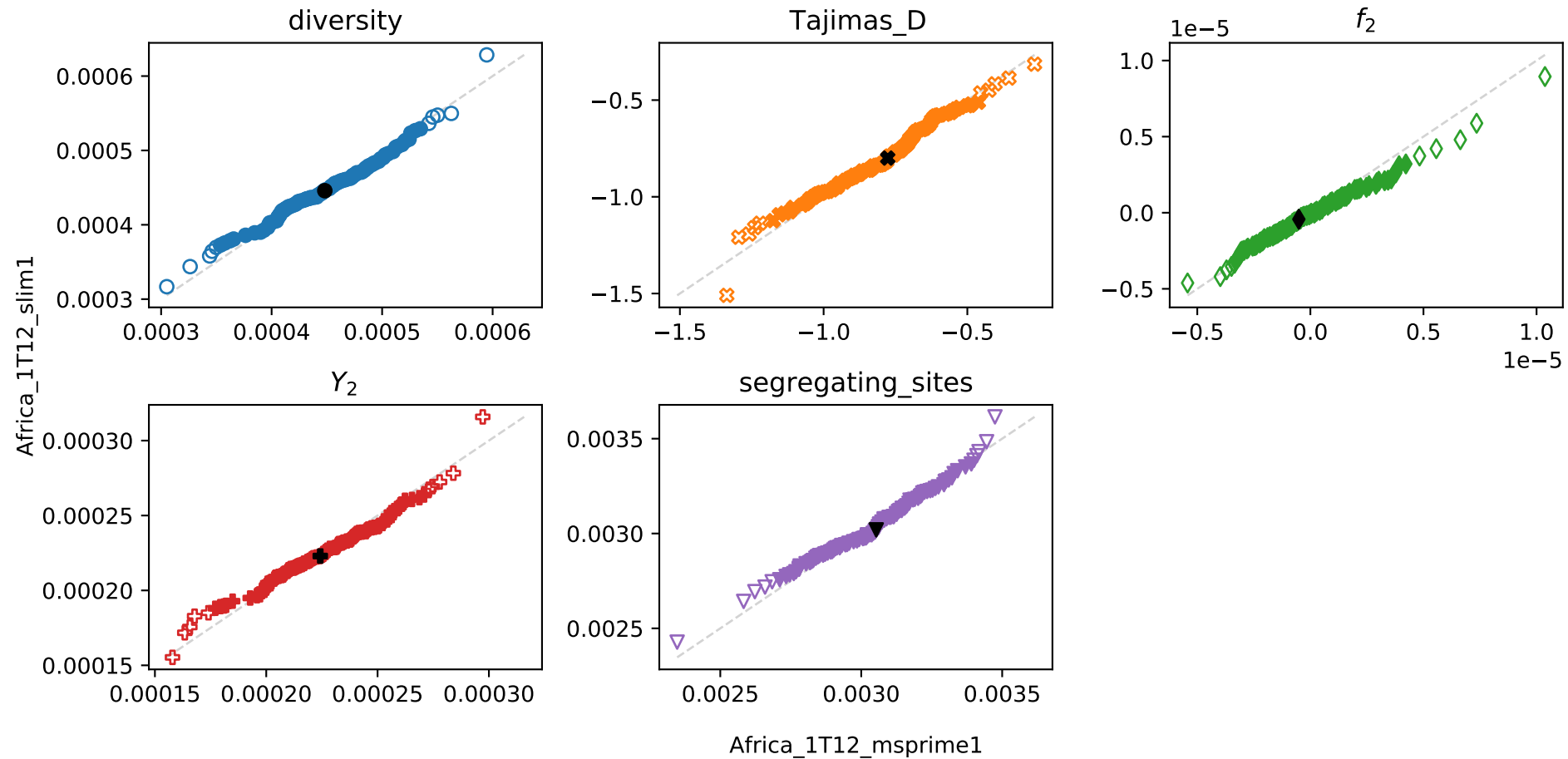


max(tmrca)



Africa_1T12_msprime1

pooled_pop_stats:
Population statistics, with samples pooled from all populations.



allele_frequency_spectrum:
Allele frequency spectrum for `bins` allele frequency bins.
Values are log(1+counts) for each bin.

Africa_1T12_slim1

