


Edit feature

 Residential Road i

All fields

**Name**

Common name (if any) +

**One Way**

No 🗑️ ↺

**Speed Limit**

40, 50, 60... km/h

**Structure**

- Bridge
- Tunnel
- Embankment
- Cutting
- Ford

[View on openstreetmap.org](https://openstreetmap.org)


Point Line Area ↶ ↷ Save 1

bing © 2015 DigitalGlobe, Image courtesy of USGS, © 2010 GeoEye, Earthstar Geographics, CNR EO-1, © 2016 Microsoft Corporation

500 ft

Edits by [worldwidewolford](#), [Samusz](#), [Lübeck](#), and

Edit feature

 Residential Road i

All fields

Name  
Common name (if any) +

One Way 🗑️ ↺  
 Yes

Speed Limit  
40, 50, 60

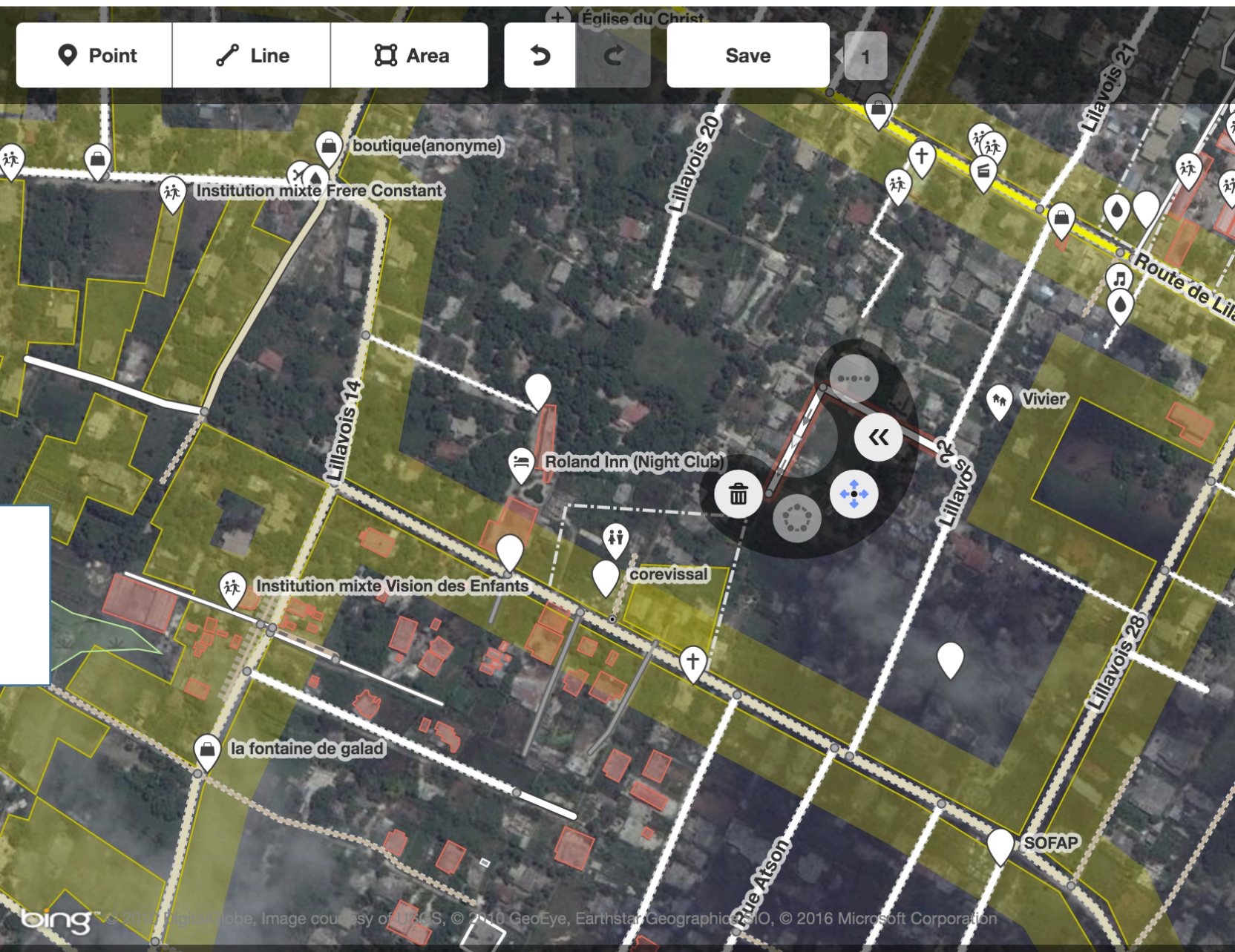
Structure

- Bridge
- Tunnel
- Embankment
- Cutting
- Ford


Which Direction?

- Same direction
- Opposite direction

Point Line Area ↶ ↷ Save 1



Edit feature

 Residential Road i

All fields

Name

Common name (if any) +

One Way 🗑️ ↺

Yes

Speed Limit

40, 50, 60

Structure

Bridge


Tunnel


Embankment

Cutting

Ford

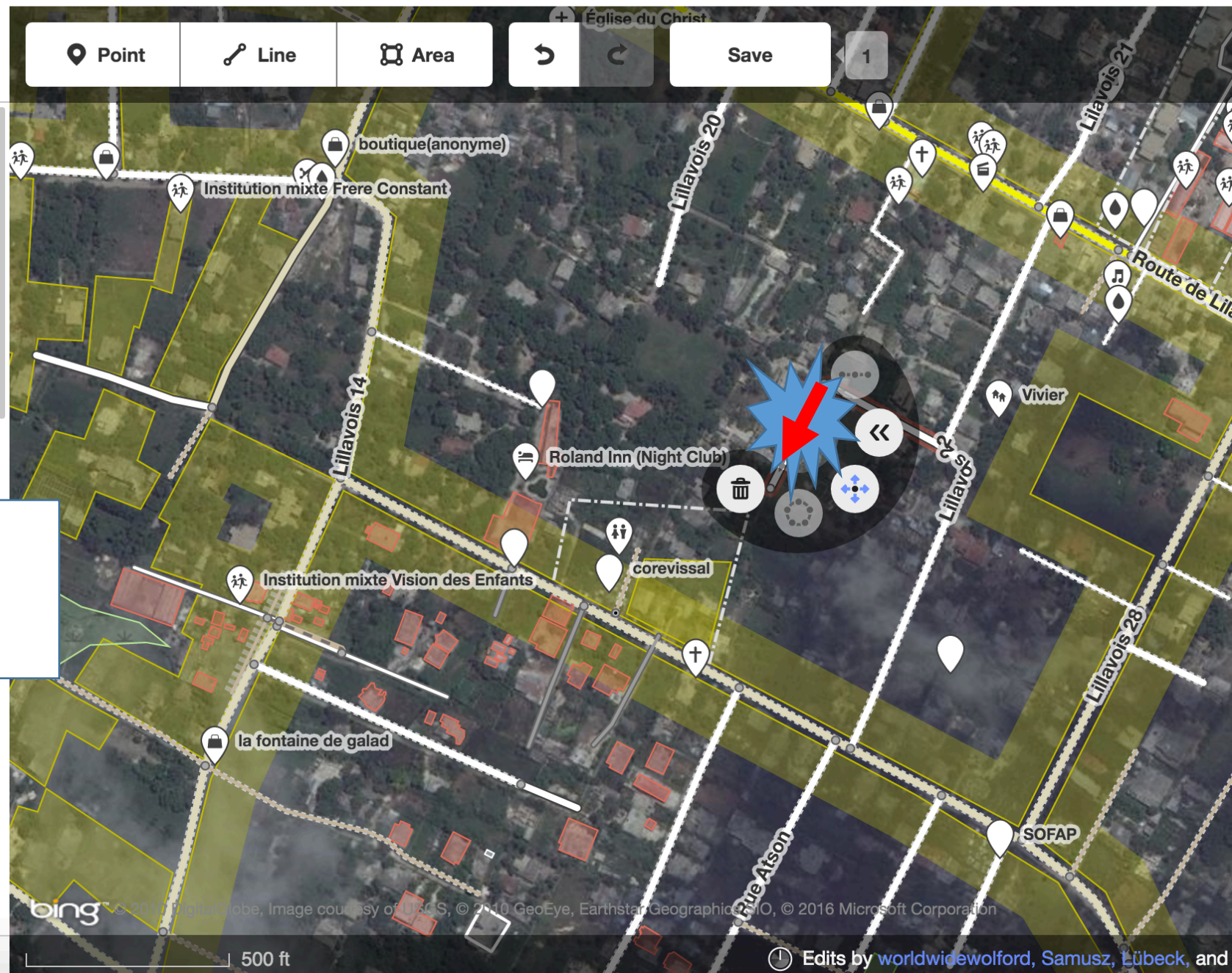
Which Direction?

 Same direction


 Opposite direction

(when changing direction, a very obvious arrow shows up on the screen, maybe some animation too)

Point Line Area ↶ ↷ Save 1



Edit feature

 Residential Road i

All fields

Name  
Common name (if any) +

One Way 🗑️ ↶  
 Yes

Speed Limit  
40, 50, 60

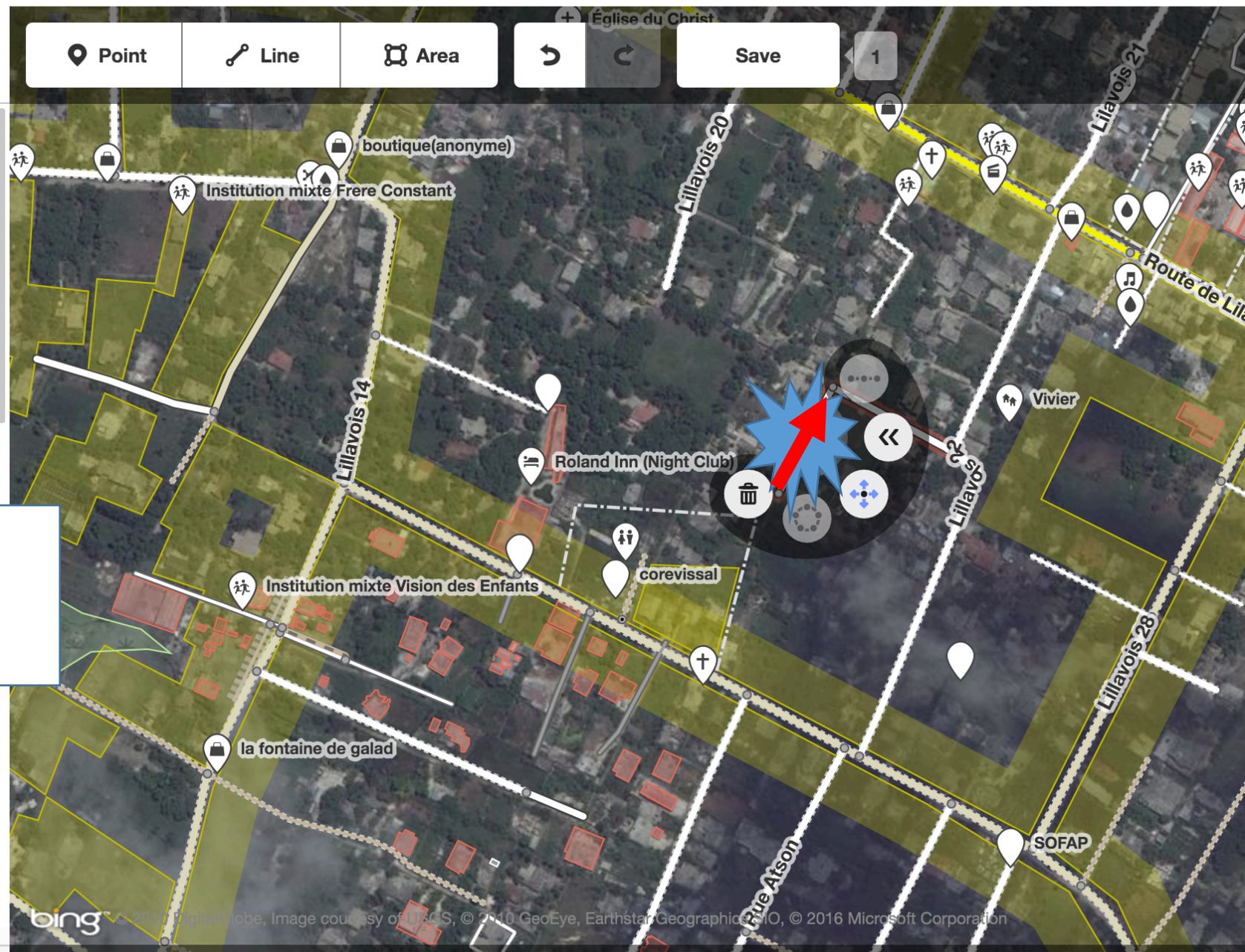
Structure

- Bridge
- Tunnel
- Embankment
- Cutting
- Ford


Which Direction?

- Same direction
- Opposite direction

Point Line Area ↶ ↷ Save 1



Edit feature

 Residential Road i

All fields

**Name**

Common name (if any) +

**One Way** 🗑️ ↻

Yes

**Speed Limit**

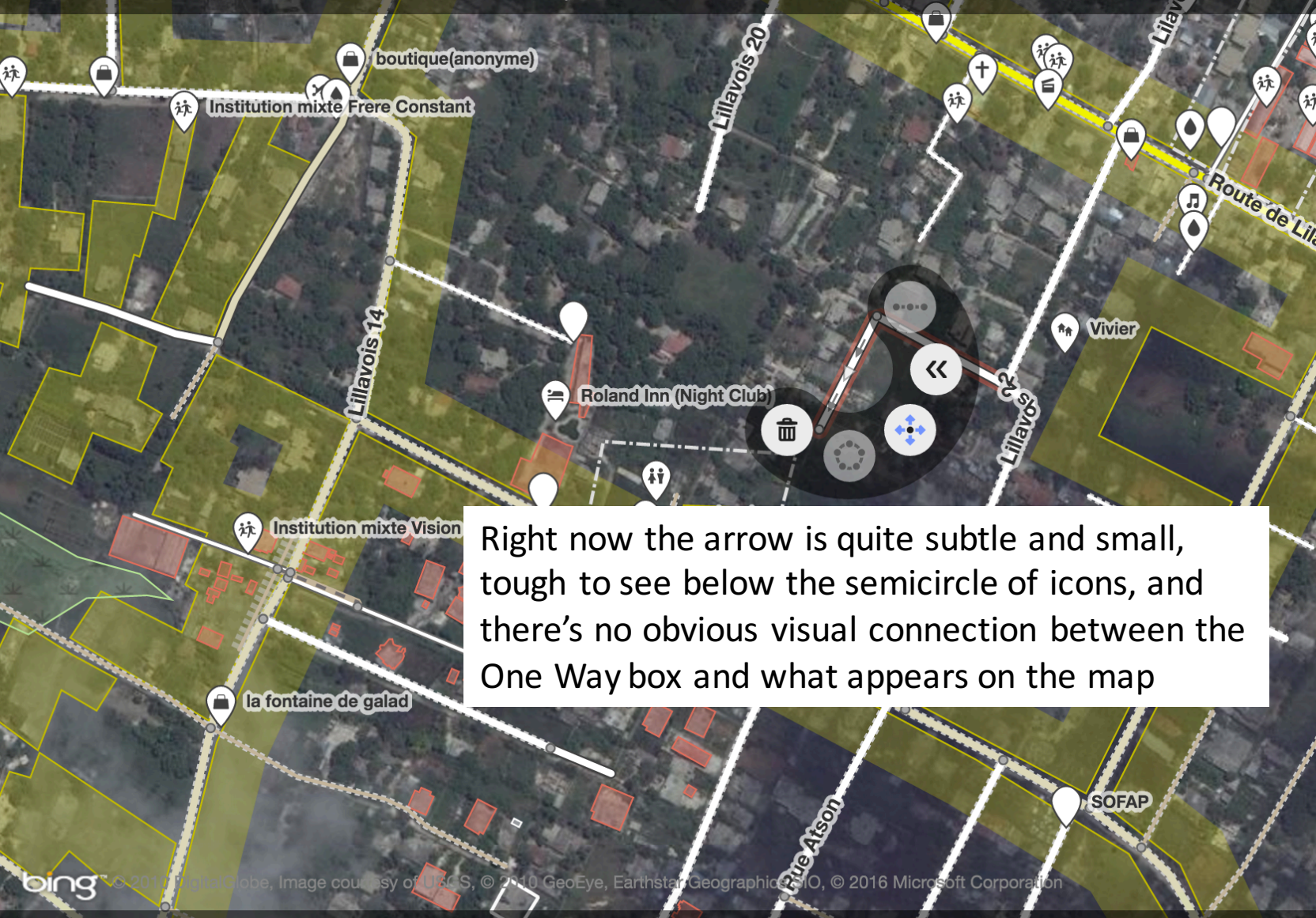
40, 50, 60... km/h

**Structure**

- Bridge
- Tunnel
- Embankment
- Cutting
- Ford

[View on openstreetmap.org](#)

Point Line Area ↶ ↷ Save 1



Right now the arrow is quite subtle and small, tough to see below the semicircle of icons, and there's no obvious visual connection between the One Way box and what appears on the map