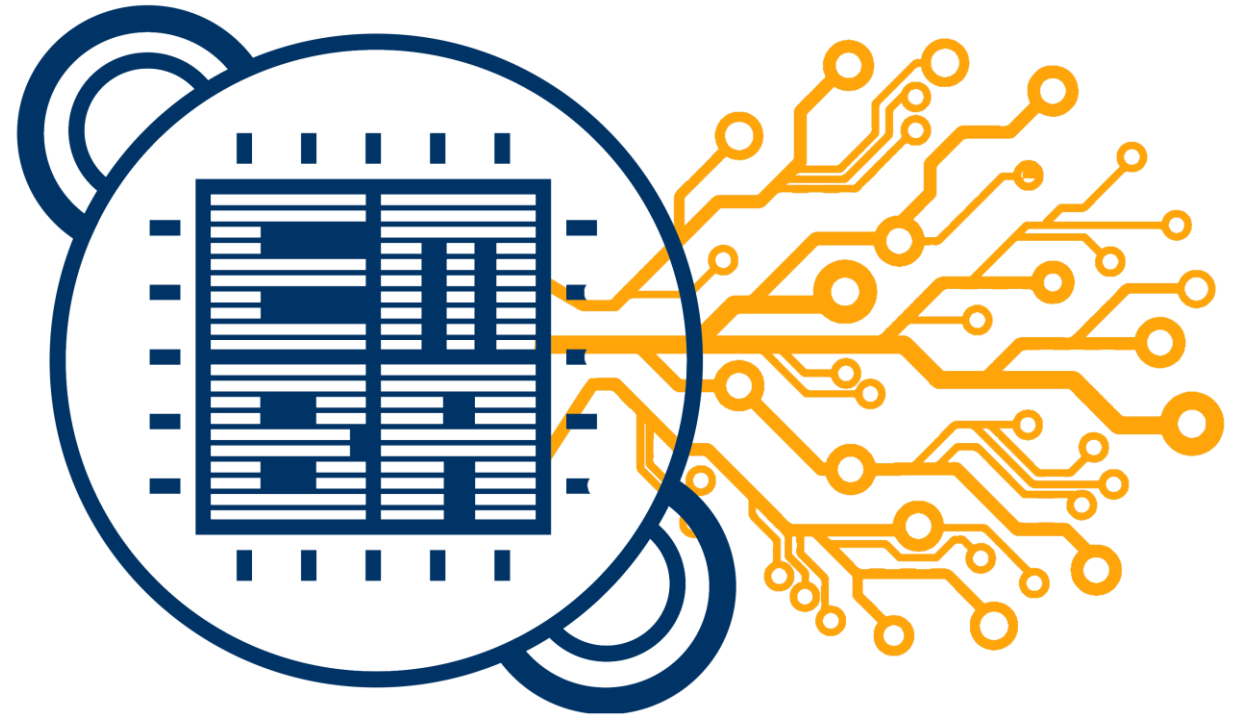


# EMBARK

A containerized service for  
analyzing embedded firmware

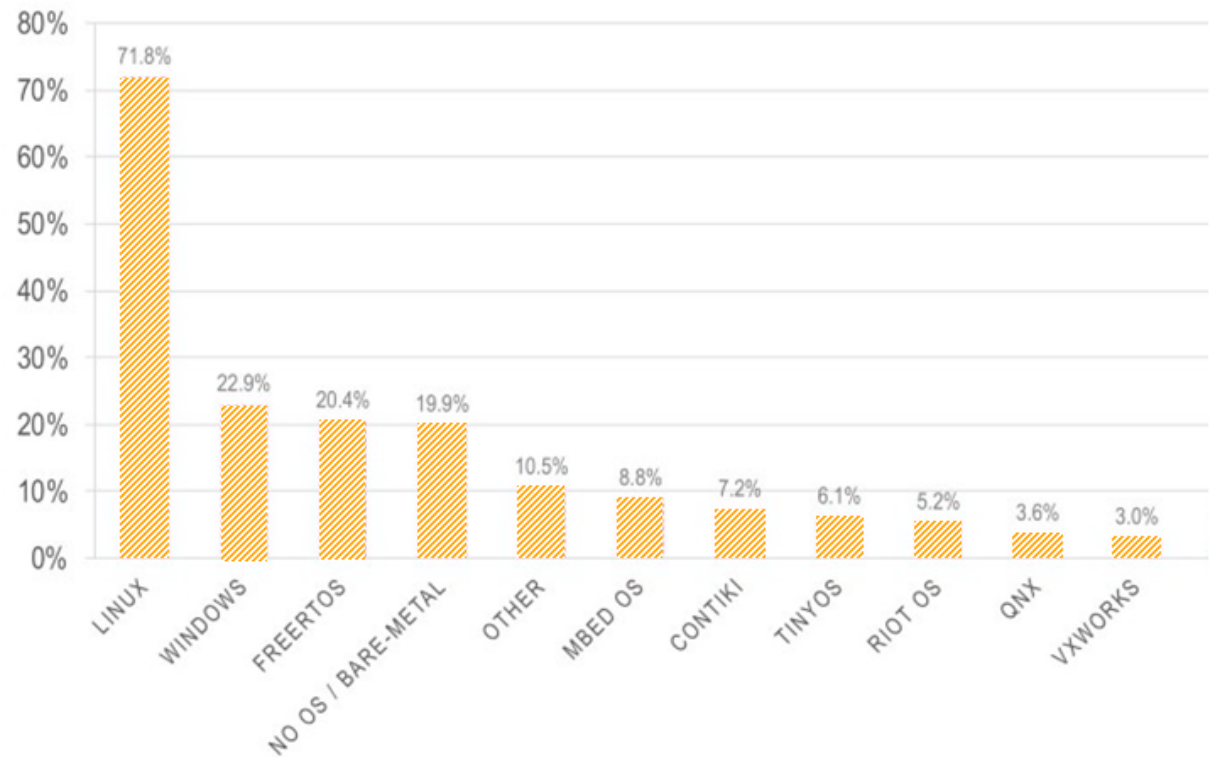


# ISSUE

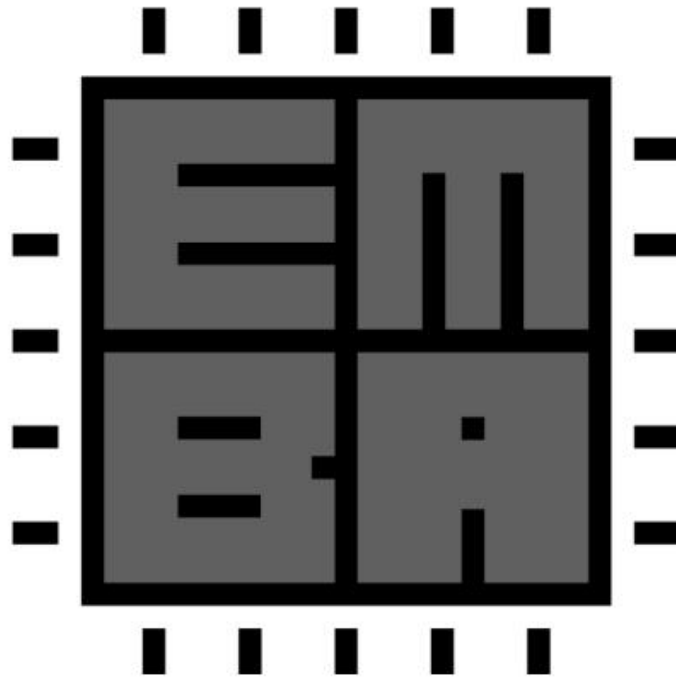
- (IoT) devices – with full operating system
- 30 billion IoT devices in private/commercial settings
- new security vulnerability

## IoT OPERATING SYSTEMS

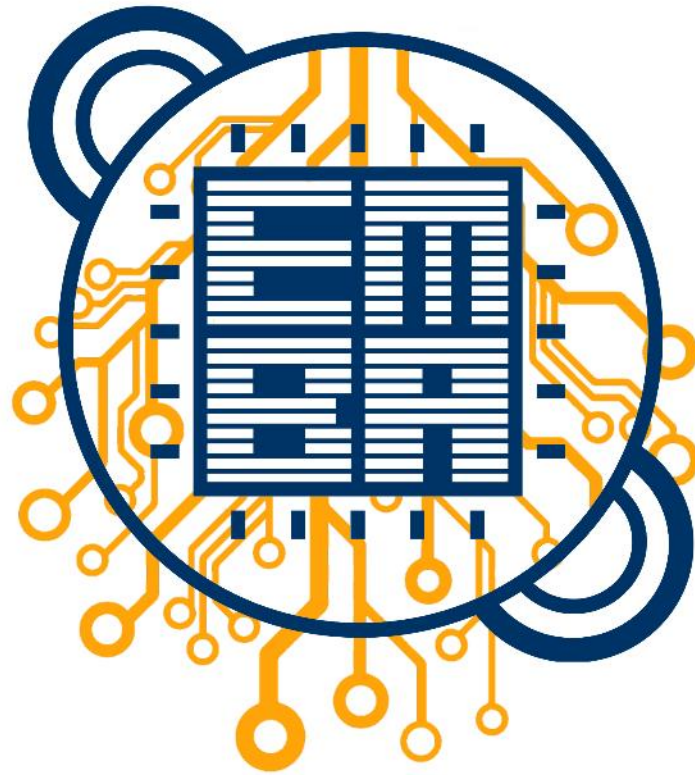
*Which operating system(s) do you use for your IoT devices?*



# EMBA – A commandline tool for analyzing embedded Linux firmware



# **EMBARK – A web based service for analyzing and reporting embedded Linux firmware**



# Vision

## EMBA as containerized service

- Containerized in docker
- basic management API
- API to upload an image and receive a report

## Multi-User Web UI

- EMBA as web service application
- A UI supporting multiple User actions at once
- Uploads are managed and reports are stored and remain available

## Management Dashboard

- Managers can get overview processes and reports
- User role system to manage access

# The Functionalities



**Multi-user upload**



**Multiple analysis running at once**



**Track current running emba processes**



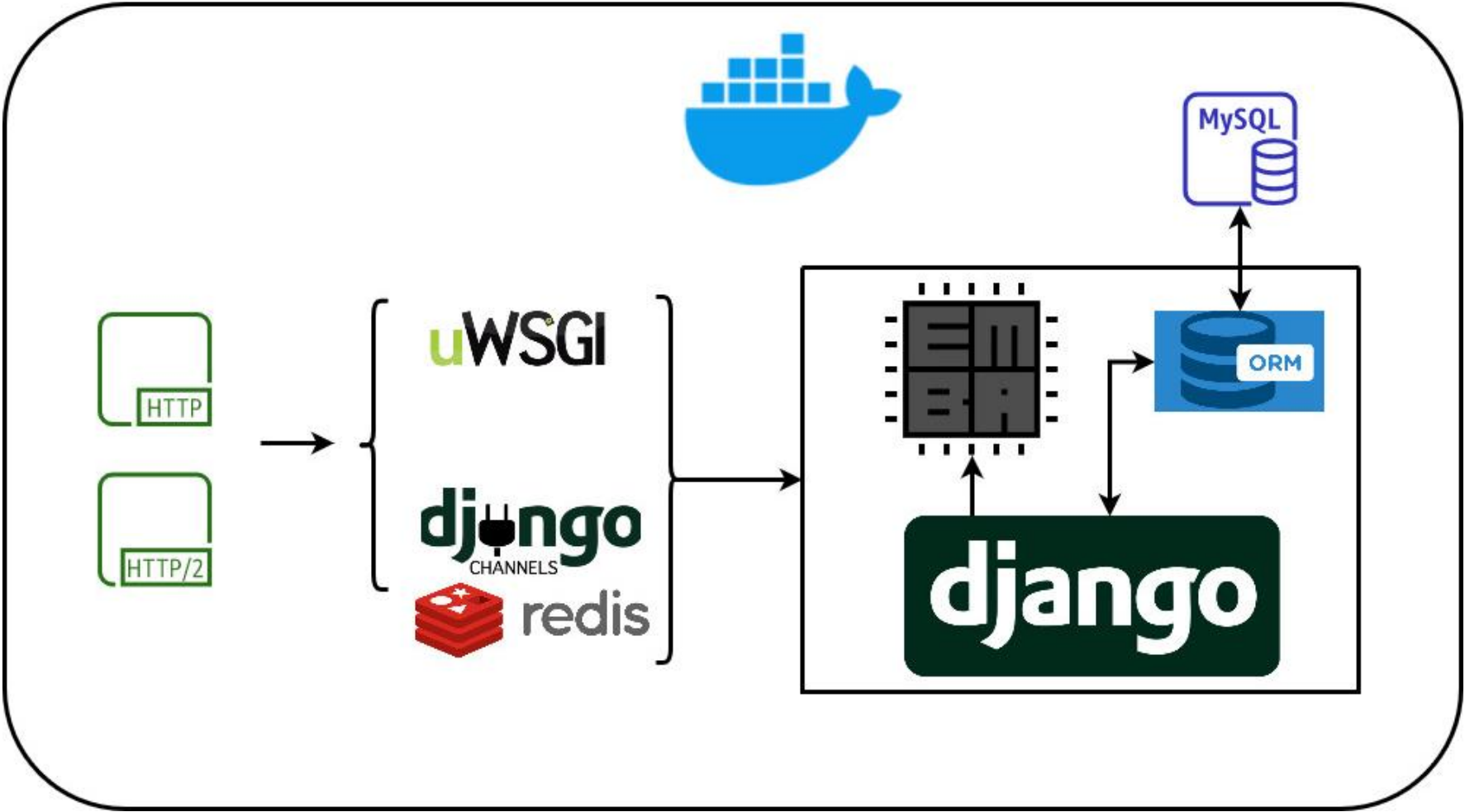
**Aggregating data in multiple Dashboards**

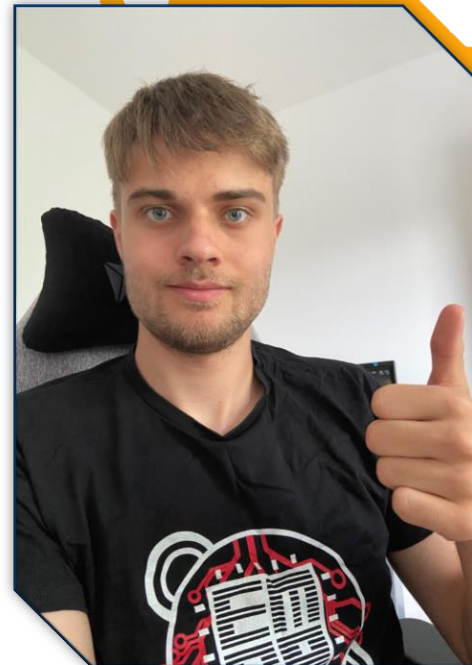
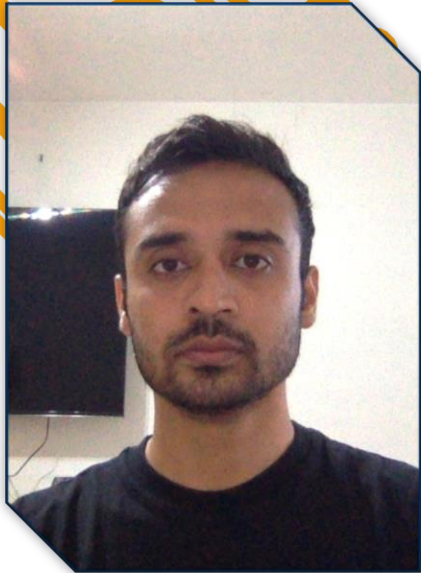


**Download reports for further analysis**



# Architecture





7/6/2021

THE AMOS PROJECT: EMBA





**HANDS ON**

# References

- <https://p4cx.medium.com/emba-b370ce503602>
- <https://www.link11.com/de/blog/it-sicherheit/internet-of-things-iot-definition-beispiele/>